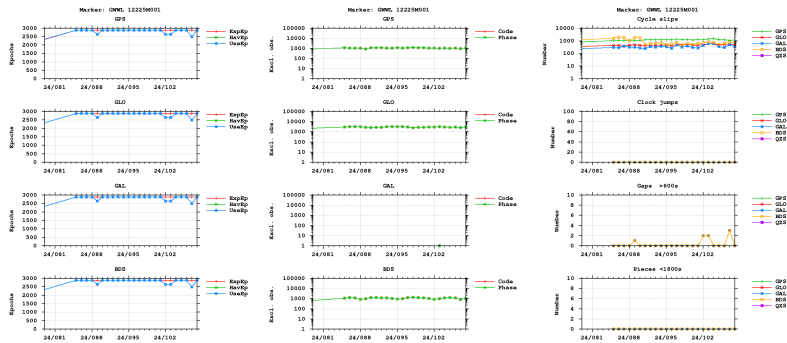


# GNSS observation file monitoring for GWWL

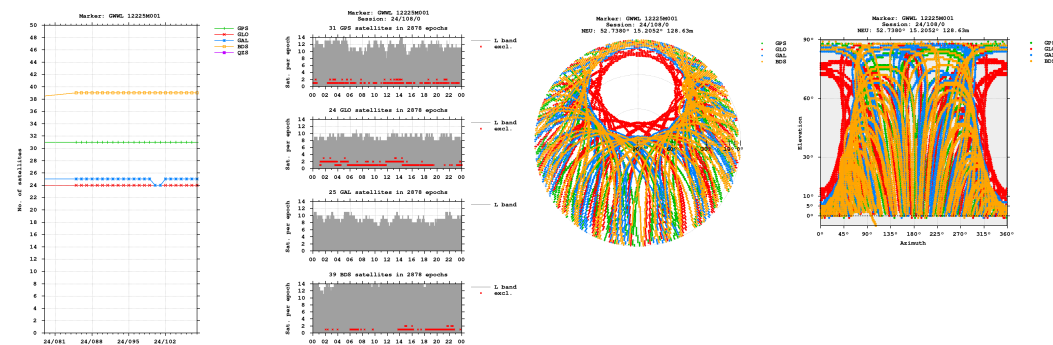
Last RINEX file: GWWL1080.24D.Z  
 RINEX version: 3.04  
 Marker: GWWL 12225M001  
 Receiver: 6333R400 TRIMBLE ALLOY Nav 6.23 / Boot 5.63  
 Antenna: 5319361129 TRM59900.00 SCIS

## Epochs

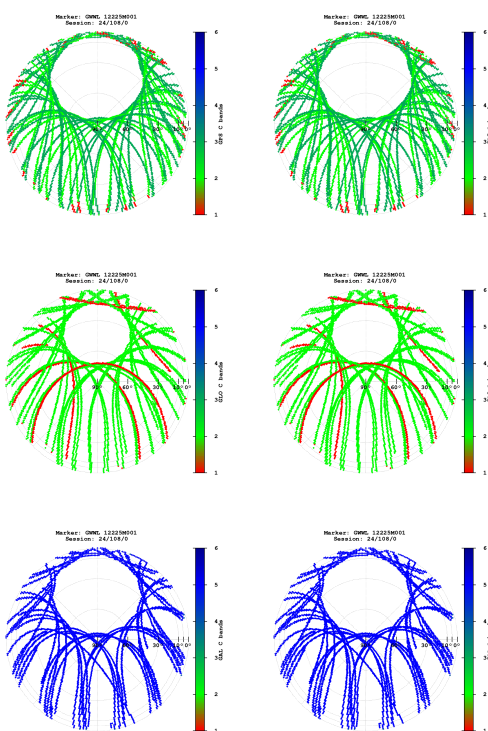


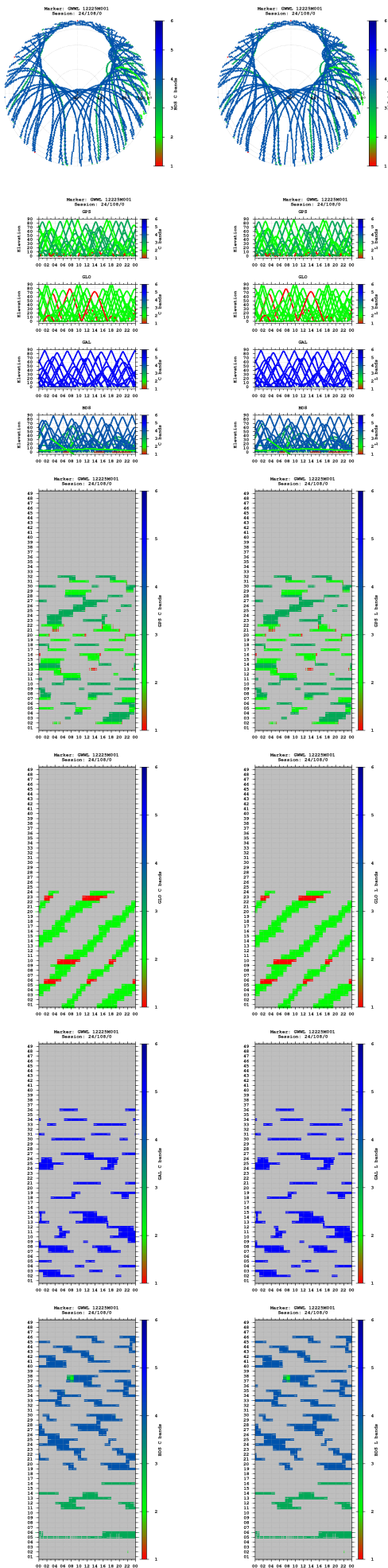
- "UseEp": The usable epoch is introduced if four or more satellites are observed with the minimum of two frequencies.
- Cycle slip detection algorithm is based on Melbourne-Wübbena and geometry-free LC.

## Satellites

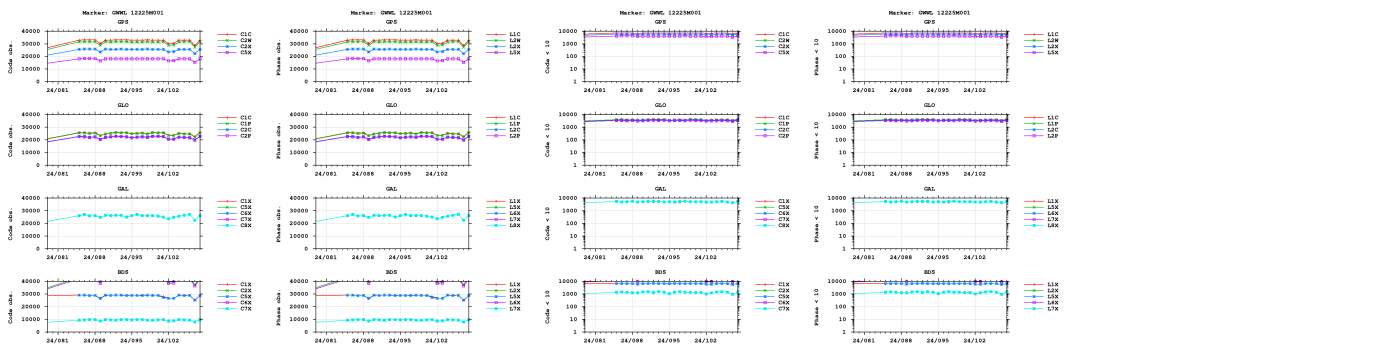


## Bands

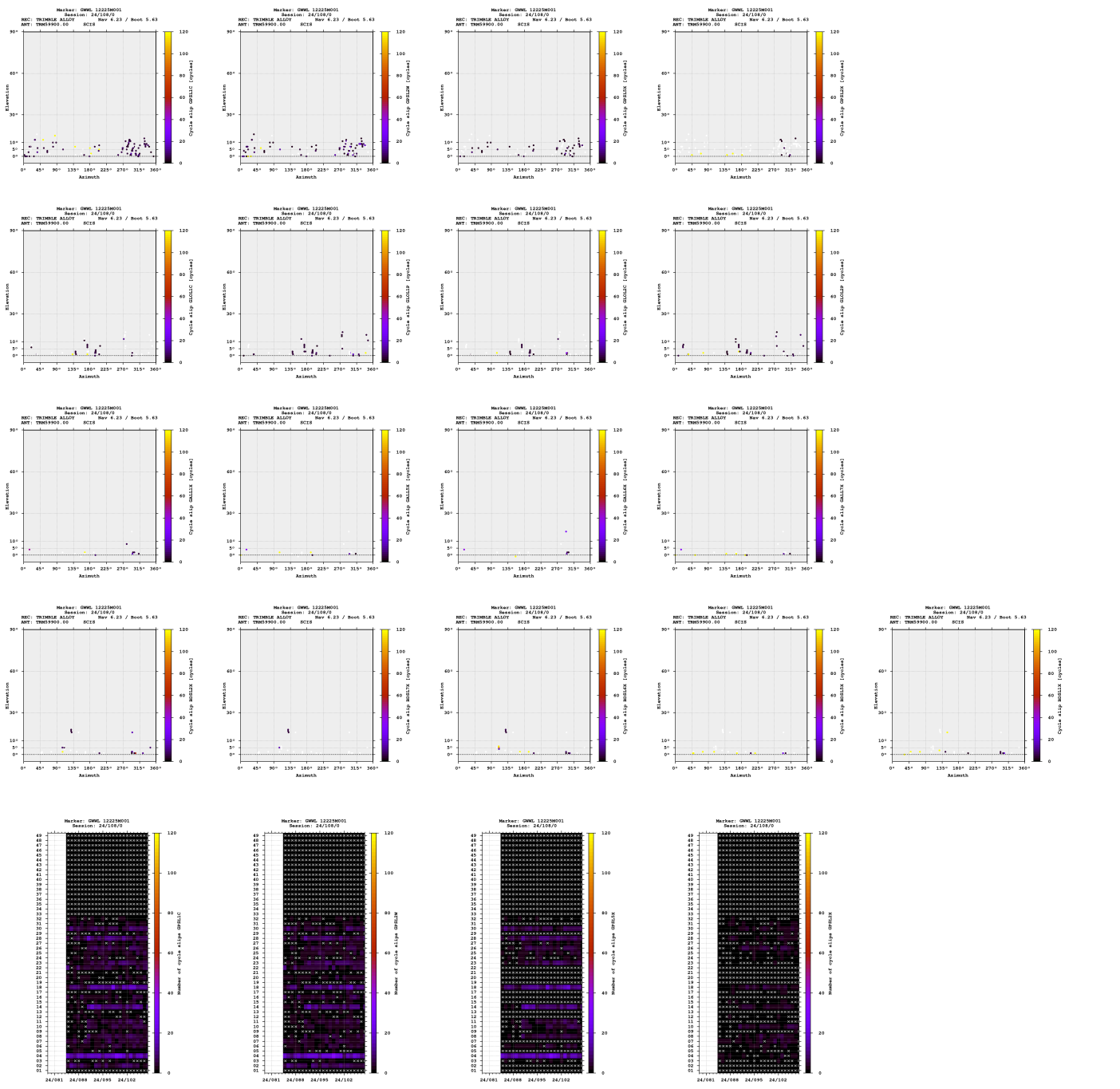


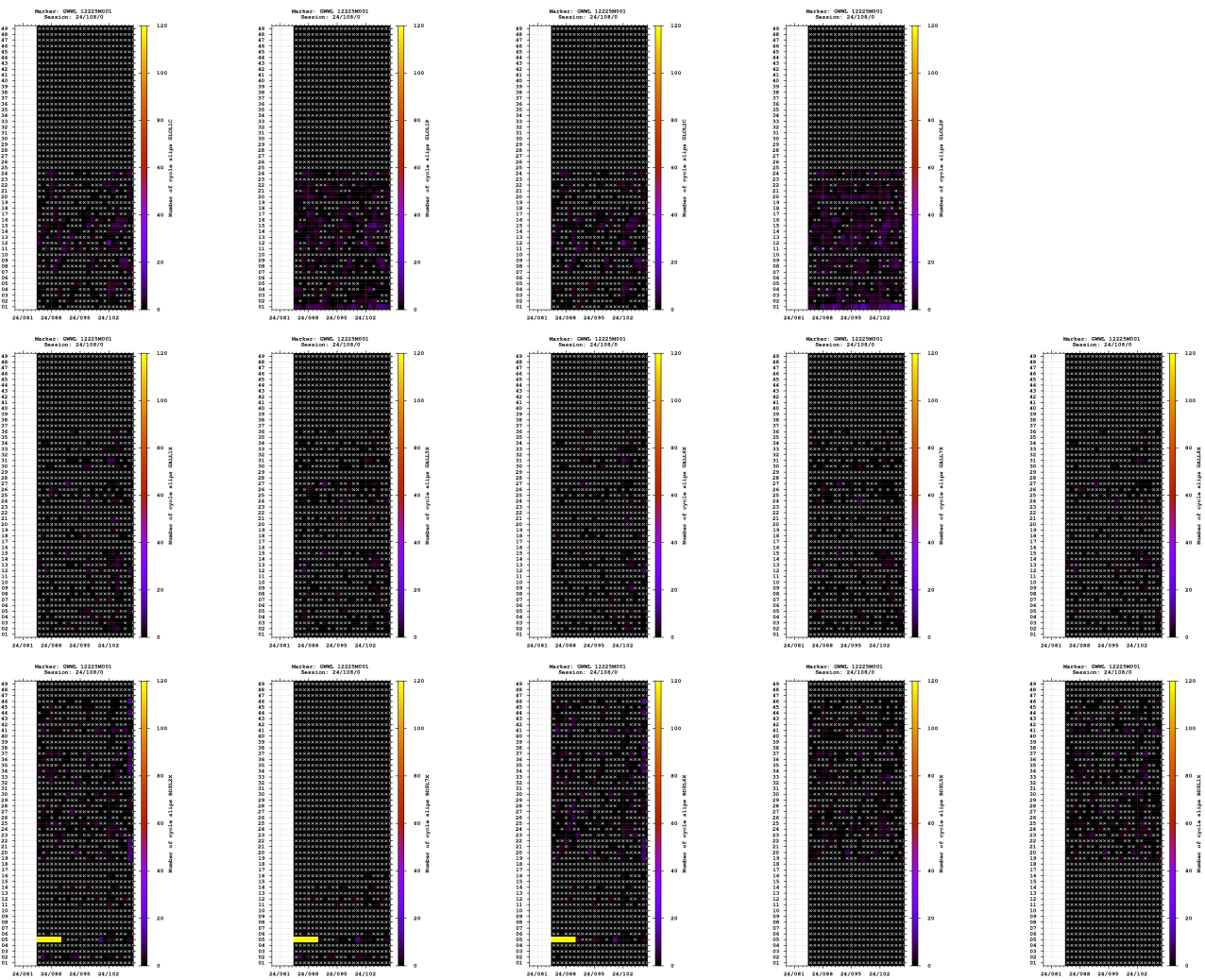


Observations

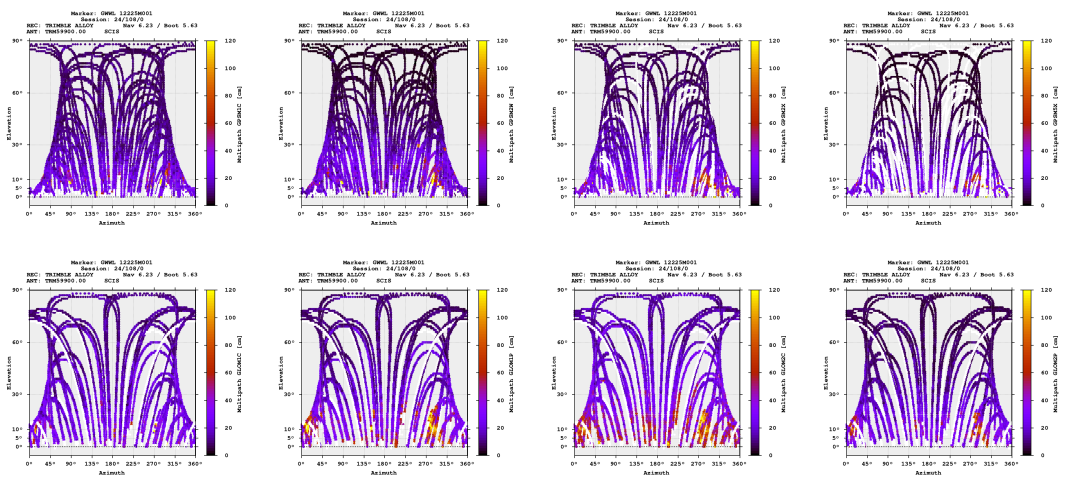
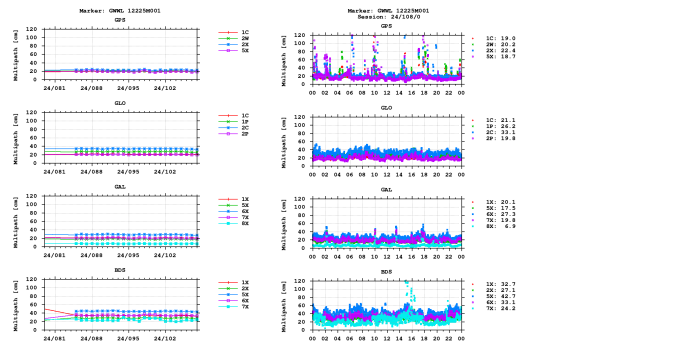


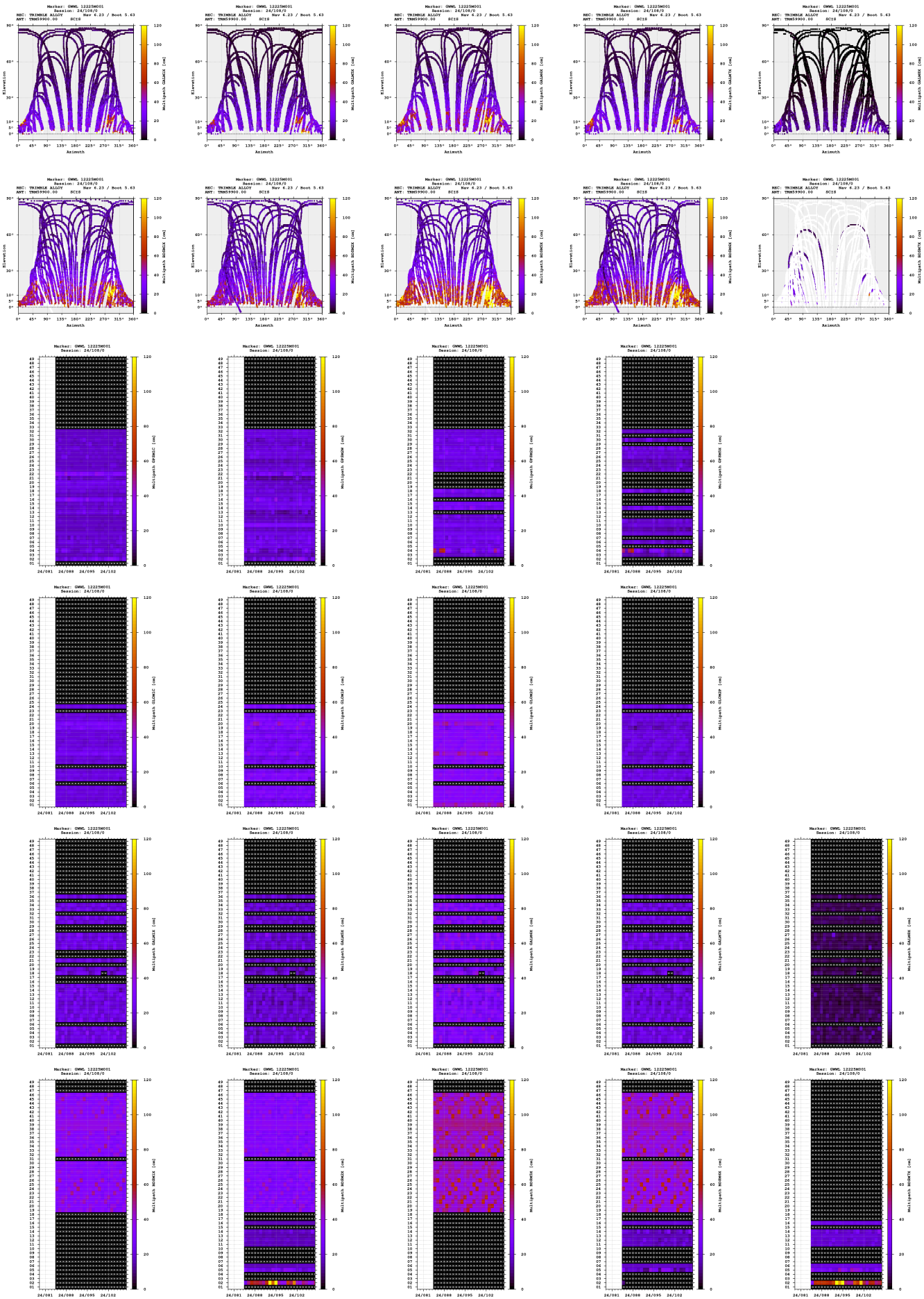
### Cycle slips





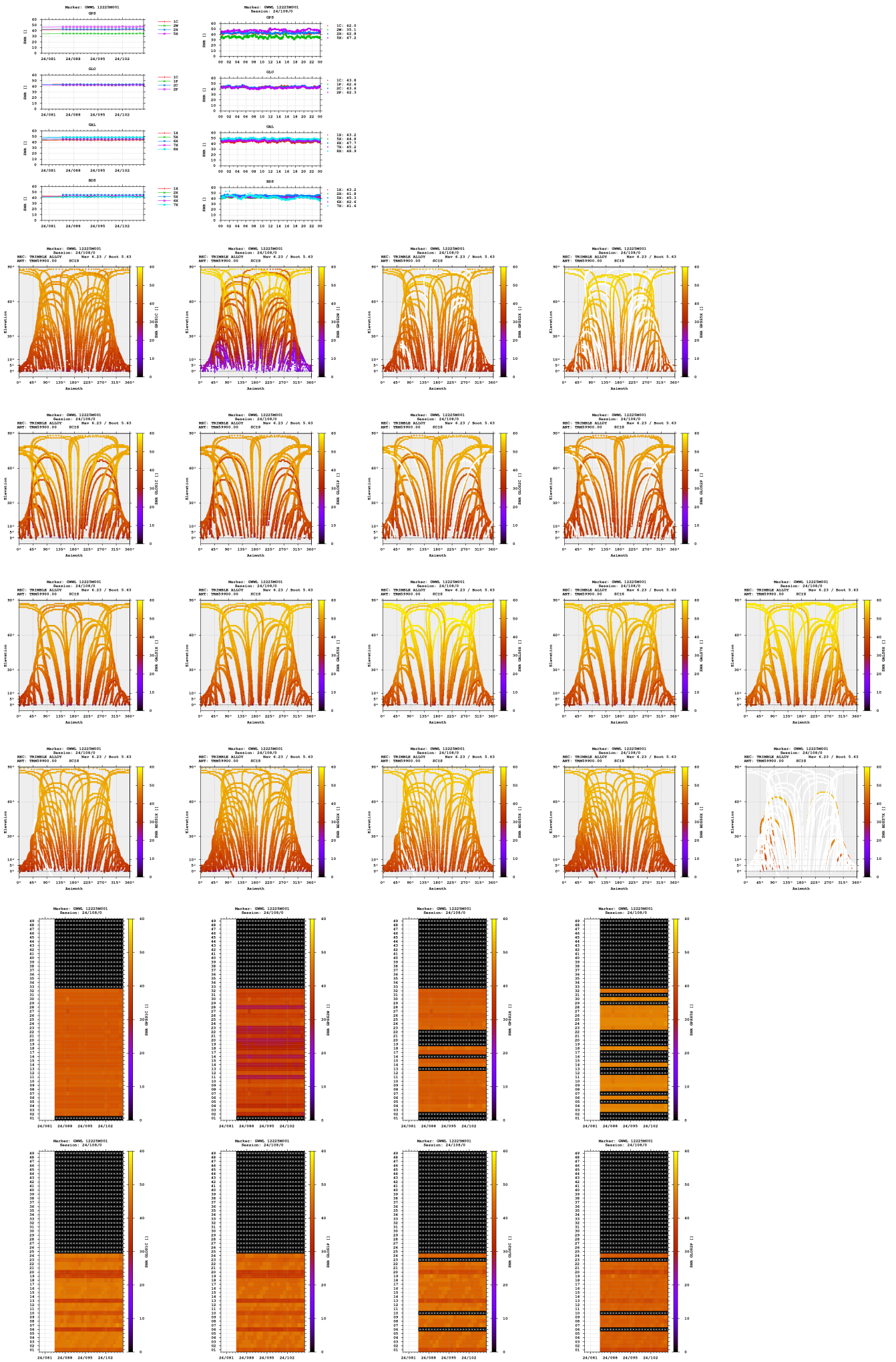
### Multipath

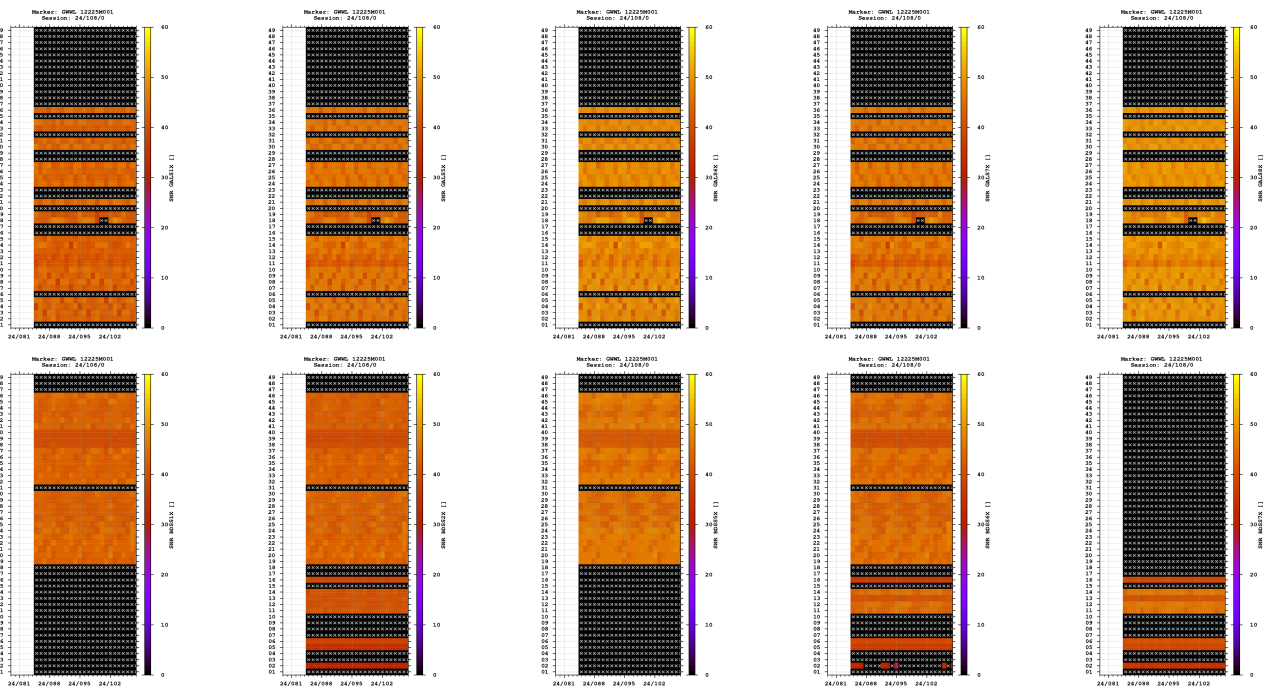




- The multipath is estimated as a standard deviation over a sequence of consecutive epochs.

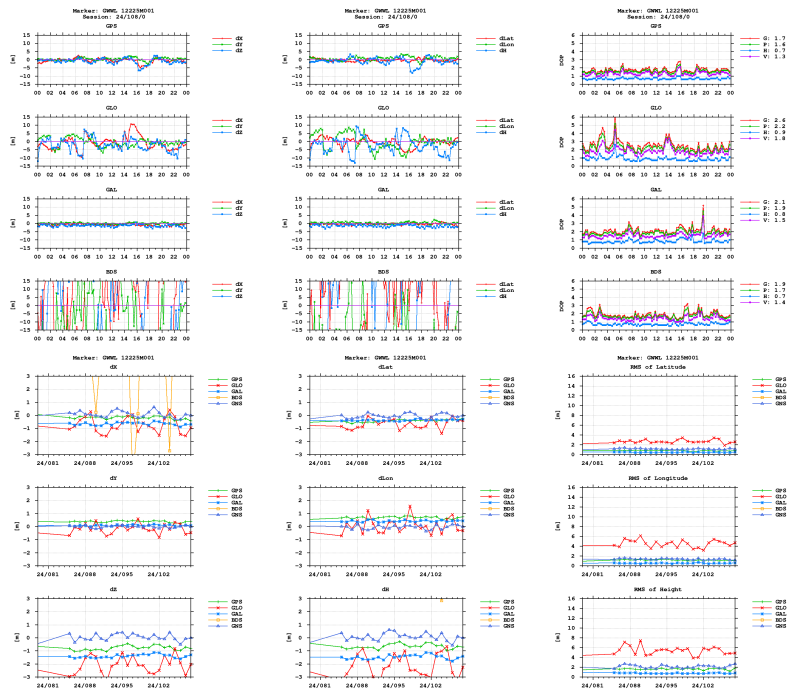
### Signal-to-noise ratio





**Estimates**

2024-04-17 00:00:00	GPS	3734525.8376	1015013.5365	5053043.4785	52.737972950	15.205219250	127.9341
2024-04-17 00:00:00	GLO	3734525.2891	1015012.7005	5053042.2566	52.737971563	15.205209616	126.3763
2024-04-17 00:00:00	GAL	3734525.5671	1015013.2469	5053042.9914	52.737972618	15.205216342	127.2102
2024-04-17 00:00:00	BDS	3734538.3275	1014992.3539	5053067.4448	52.738056785	15.204868297	150.8100



**Equipment**

2024-03-08 00:00:00	TRIMBLE ALLOY	Nav 6.23 / Boot 5.63	6333R400 TRIMBLE AL
2024-03-29 00:00:00	TRIMBLE ALLOY	Nav 6.23 / Boot 5.63	5742R513 TRIMBLE AL
2024-03-30 00:00:00	TRIMBLE ALLOY	Nav 6.23 / Boot 5.63	6333R400 TRIMBLE AL
2024-04-10 00:00:00	TRIMBLE ALLOY	Nav 6.23 / Boot 5.63	5742R513 TRIMBLE AL
2024-04-17 00:00:00	TRIMBLE ALLOY	Nav 6.23 / Boot 5.63	6333R400 TRIMBLE AL

**Program info**

G-Nut/Anubis Free [3.8] Mar 3 2024 20:32:19 (Rev: 4233)