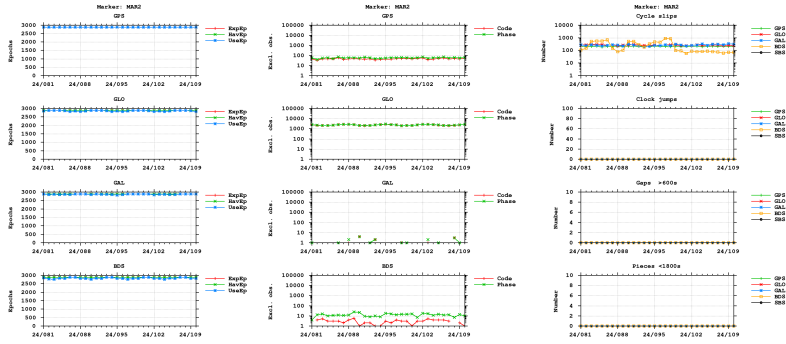


GNSS observation file monitoring for MAR2

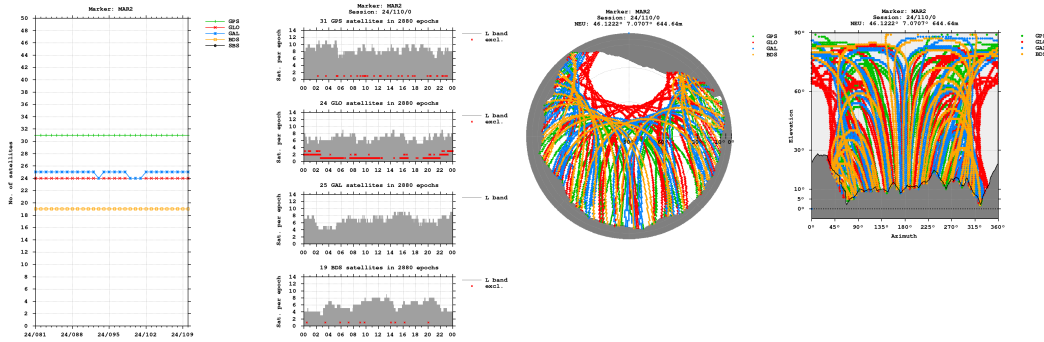
Last RINEX file: MAR21100.24D.Z
 RINEX version: 3.04
 Marker: MAR2
 Receiver: 5429R491 TRIMBLE NETR9 5.56
 Antenna: 60440 TRM59800.00 NONE

Epochs

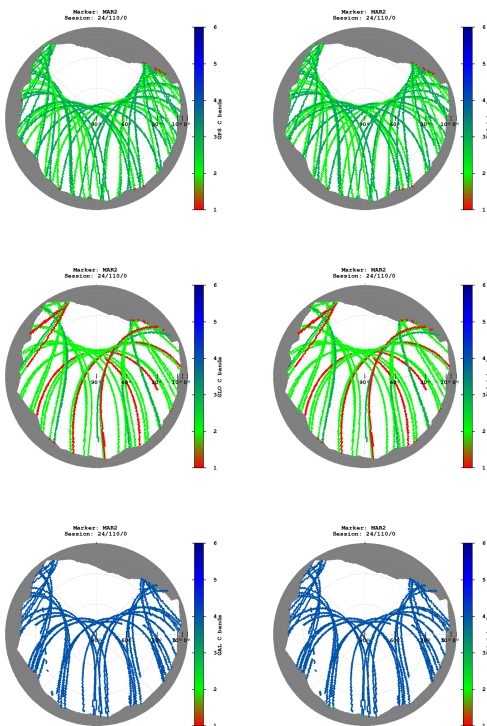


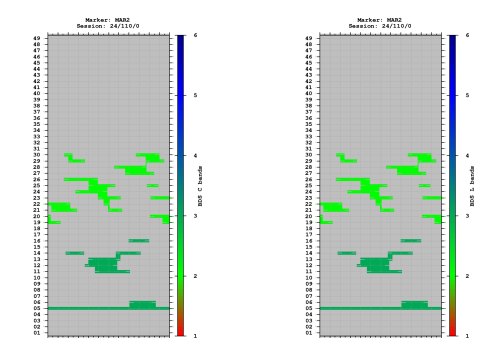
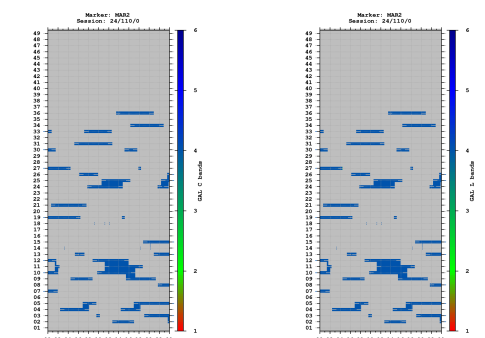
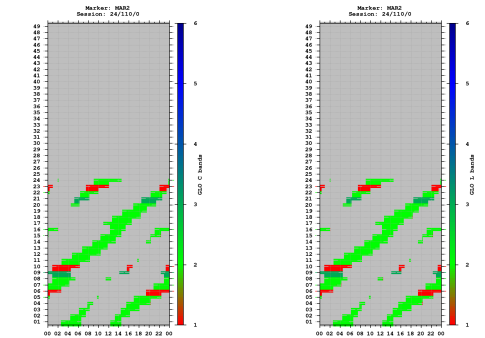
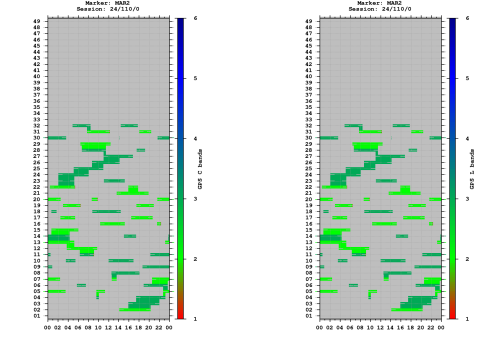
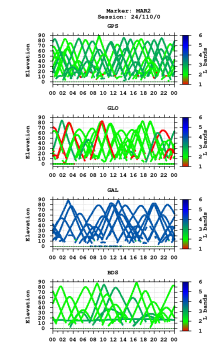
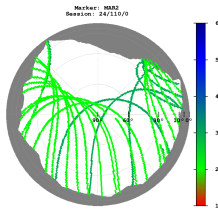
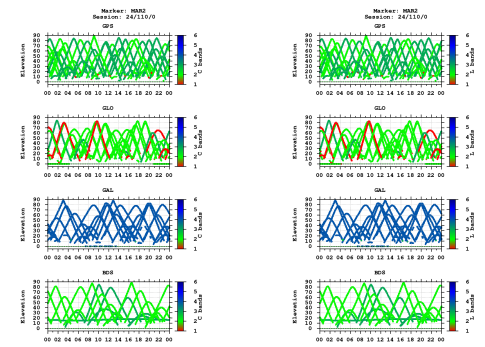
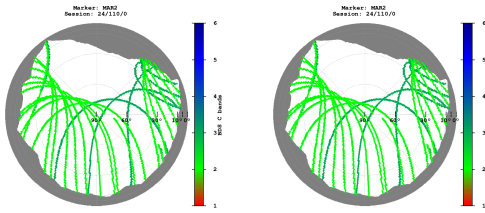
- "UseEp": The usable epoch is introduced if four or more satellites are observed with the minimum of two frequencies.
- Cycle slip detection algorithm is based on Melbourne-Wübbena and geometry-free LC.

Satellites

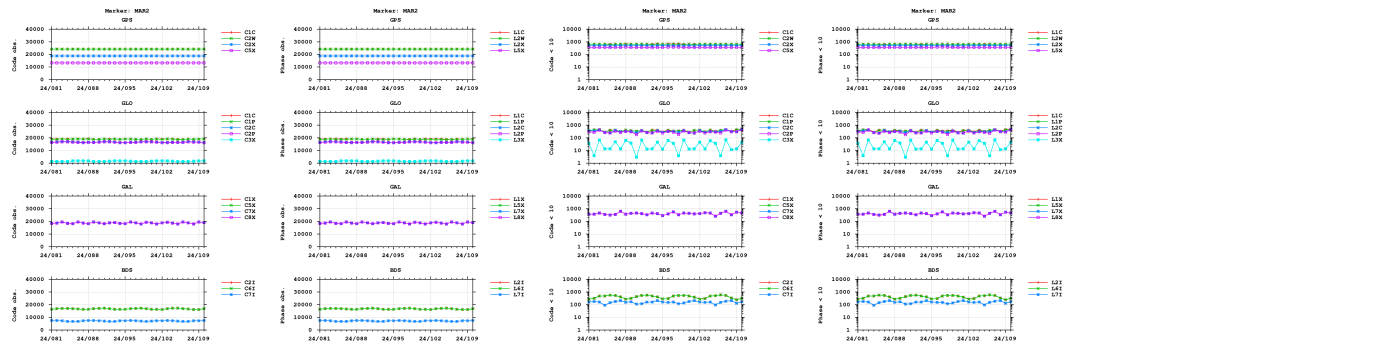


Bands

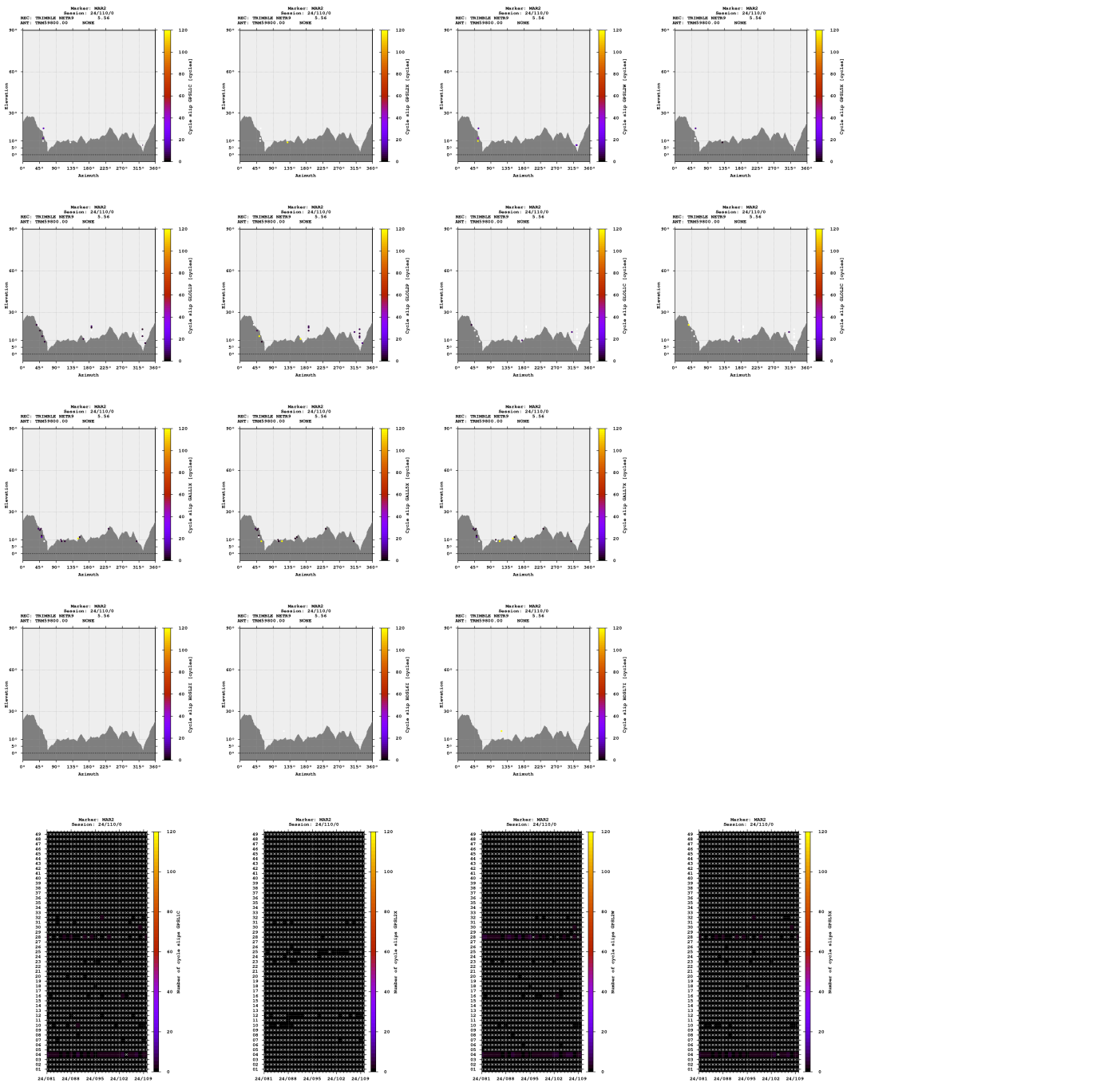


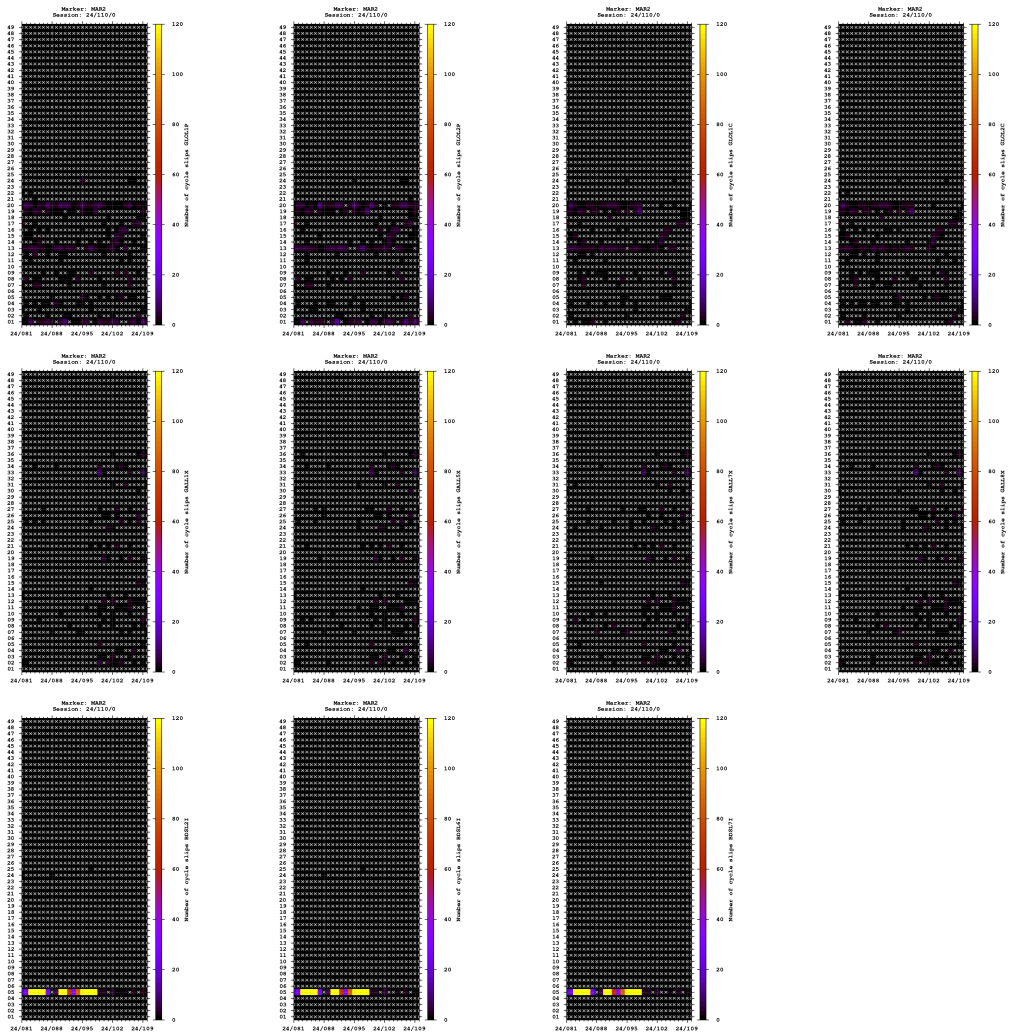


Observations

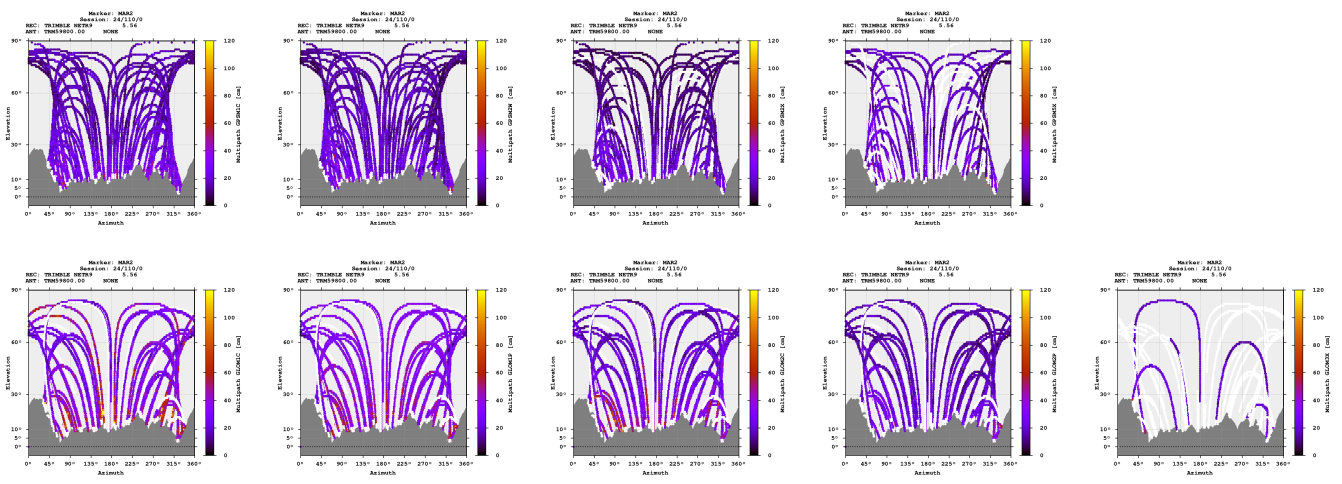
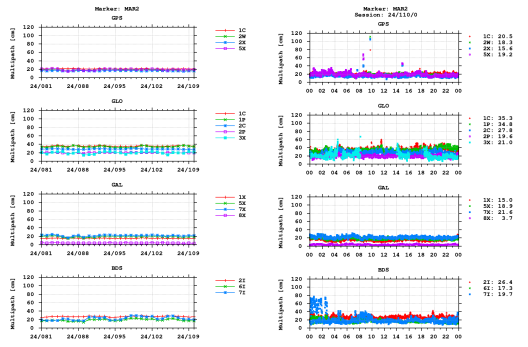


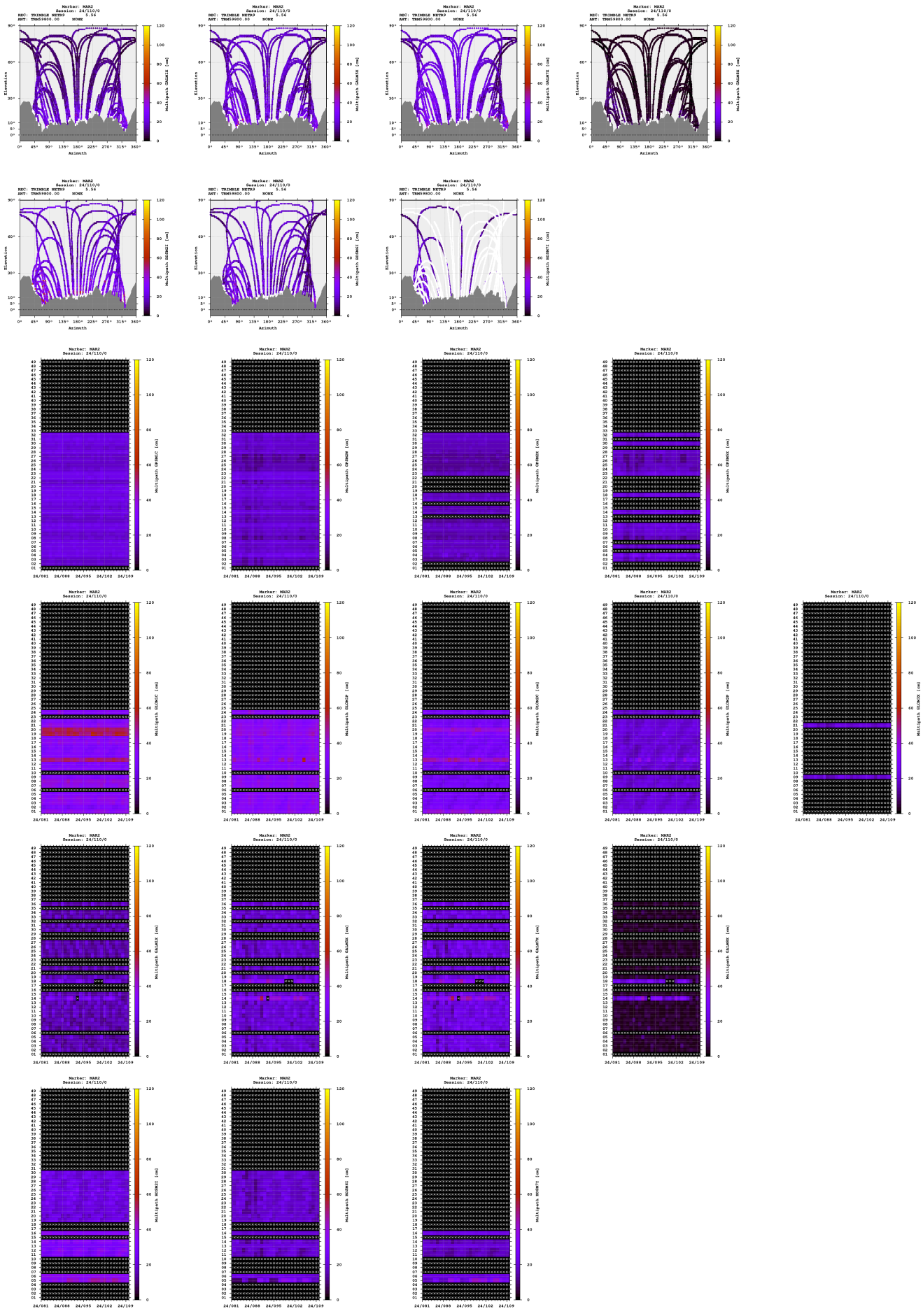
Cycle slips





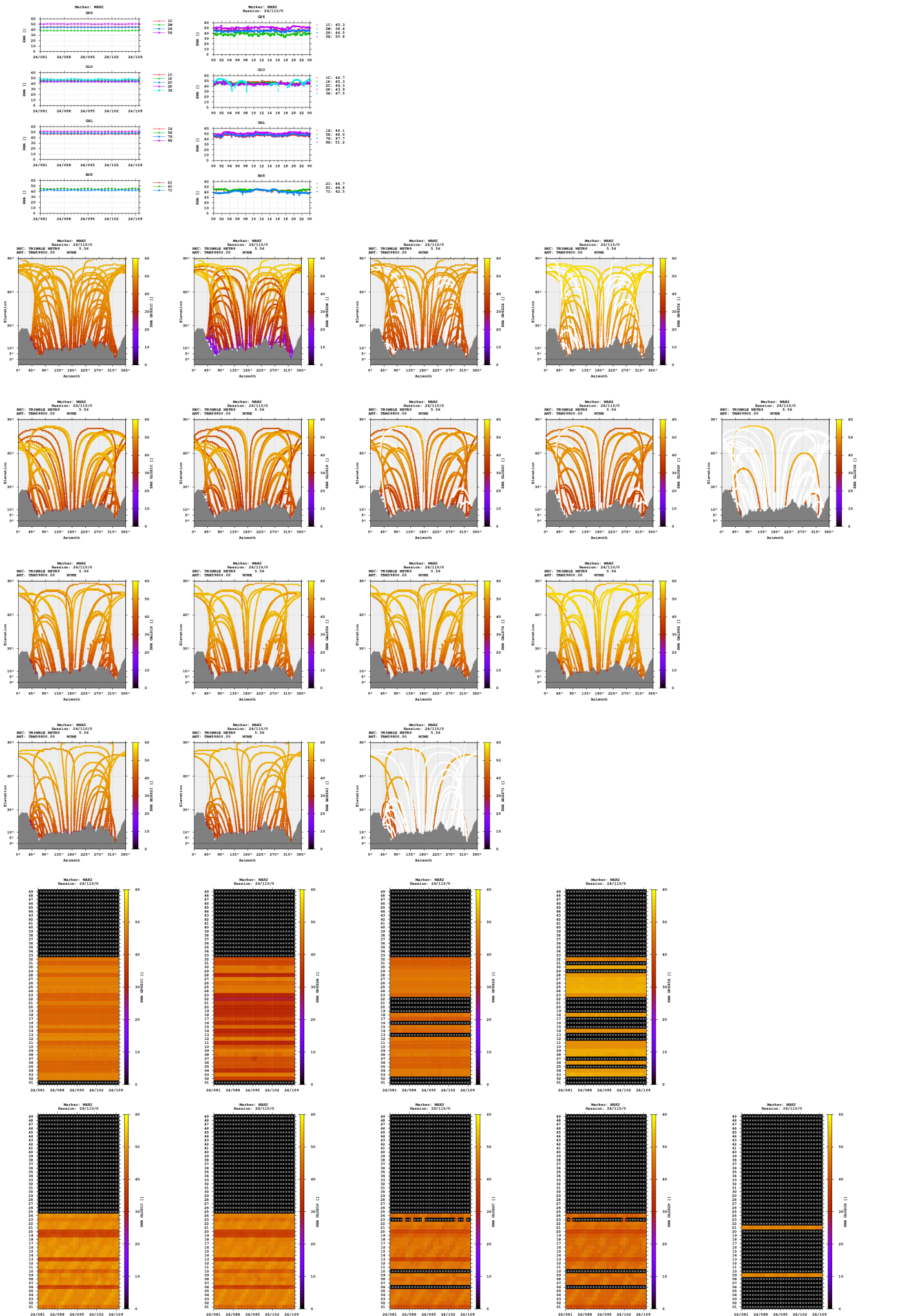
Multipath

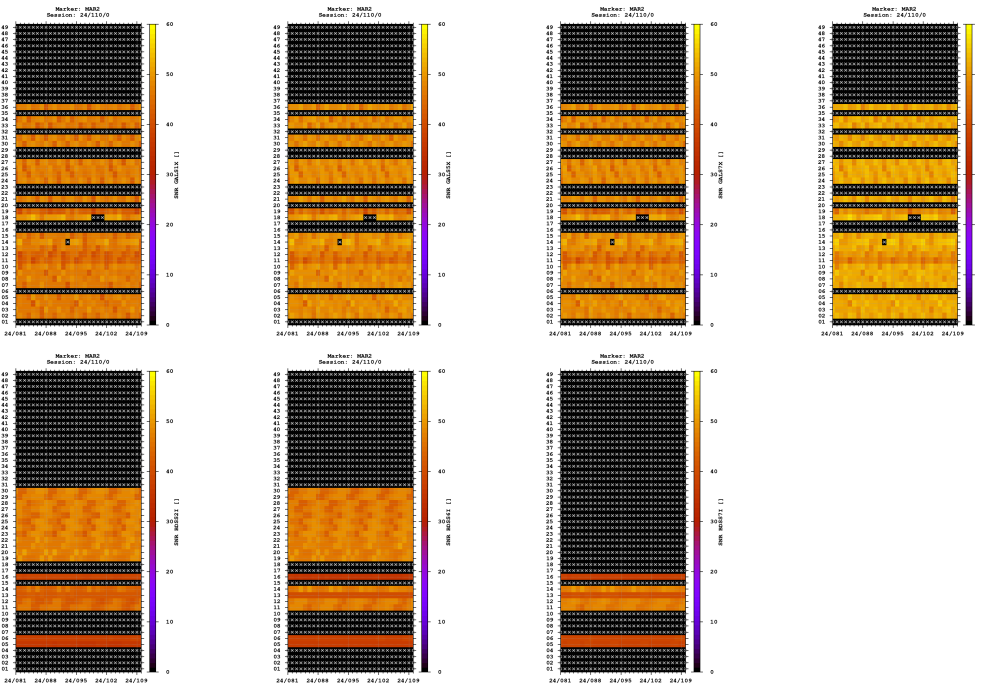




- The multipath is estimated as a standard deviation over a sequence of consecutive epochs.

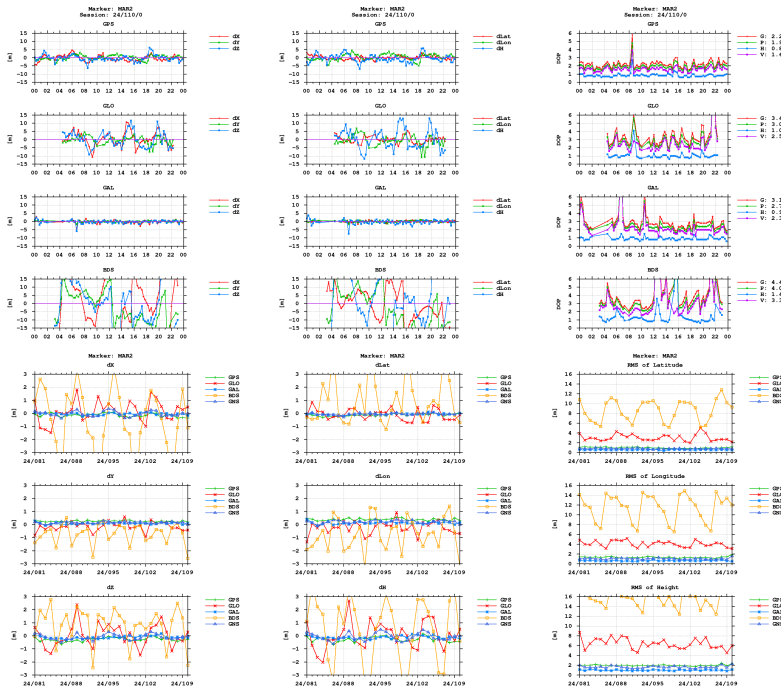
Signal-to-noise ratio





Estimates

| | | | | | | | |
|---------------------|-----|--------------|-------------|--------------|--------------|-------------|----------|
| 2024-04-19 00:00:00 | GPS | 4395306.8664 | 545182.3082 | 4575133.6441 | 46.122157588 | 7.070703880 | 644.2198 |
| 2024-04-19 00:00:00 | GLO | 4395307.6991 | 545181.6966 | 4575134.2183 | 46.122156298 | 7.070694703 | 645.1543 |
| 2024-04-19 00:00:00 | GAL | 4395307.0456 | 545182.2101 | 4575133.7808 | 46.122157366 | 7.070702335 | 644.4332 |
| 2024-04-19 00:00:00 | BDS | 4395306.1097 | 545179.5367 | 4575131.6795 | 46.122150974 | 7.070672273 | 644.2388 |



Equipment

2024-03-21 00:00:00 TRIMBLE NETR9 5.56 5429R491 TRIMBLE NE

Program info

G-Nut/Anubis Free [3.8] Mar 3 2024 20:32:19 (Rev: 4233)