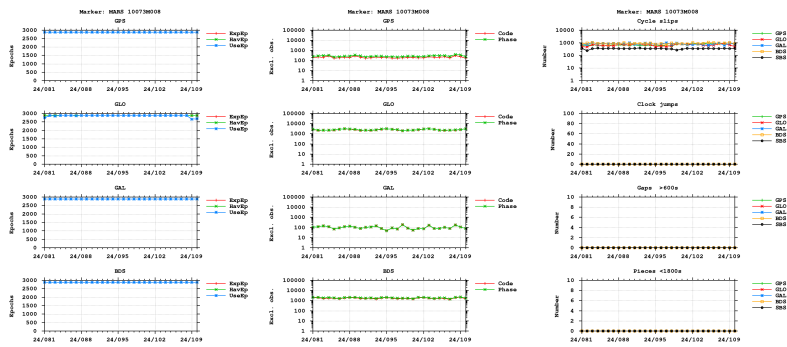


# GNSS observation file monitoring for MARS

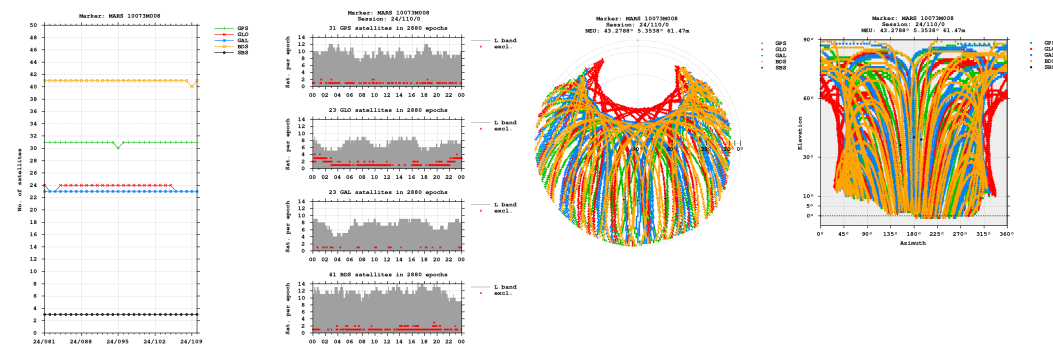
Last RINEX file: MARS1100.24D.Z  
 RINEX version: 3.04  
 Marker: MARS 10073M008  
 Receiver: 1834684 LEICA GR50 4.51  
 Antenna: 5311118232 TRM57971.00 NONE

## Epochs

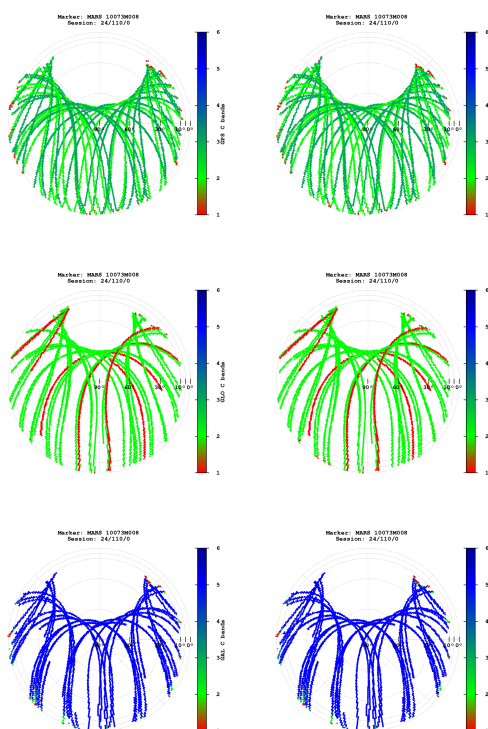


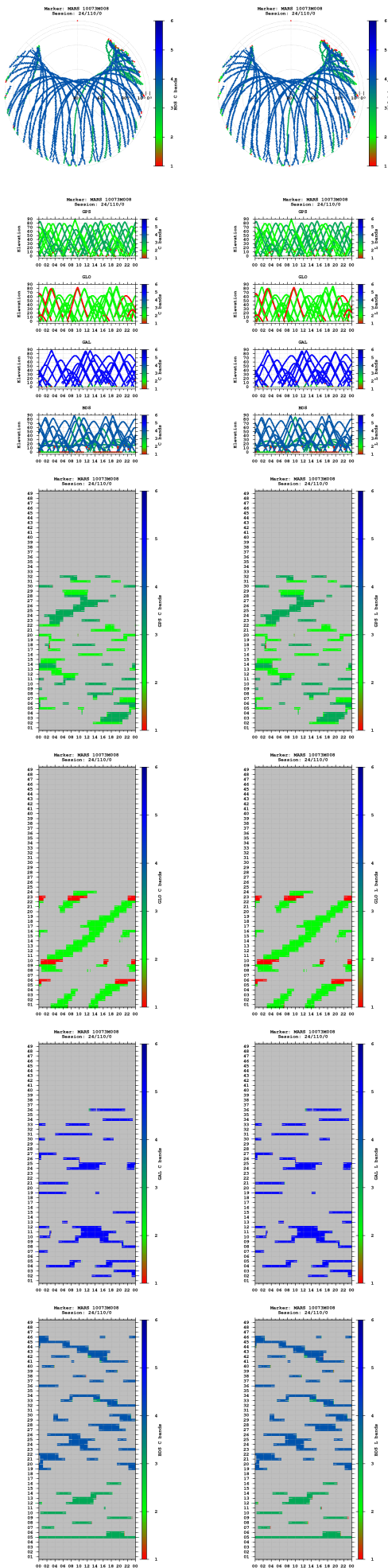
- "UseEp": The usable epoch is introduced if four or more satellites are observed with the minimum of two frequencies.
- Cycle slip detection algorithm is based on Melbourne-Wübbena and geometry-free LC.

## Satellites

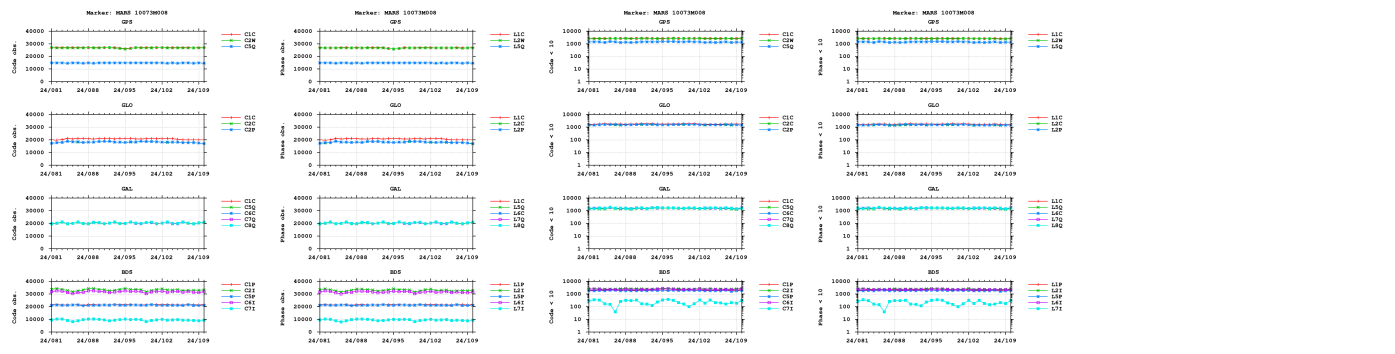


## Bands

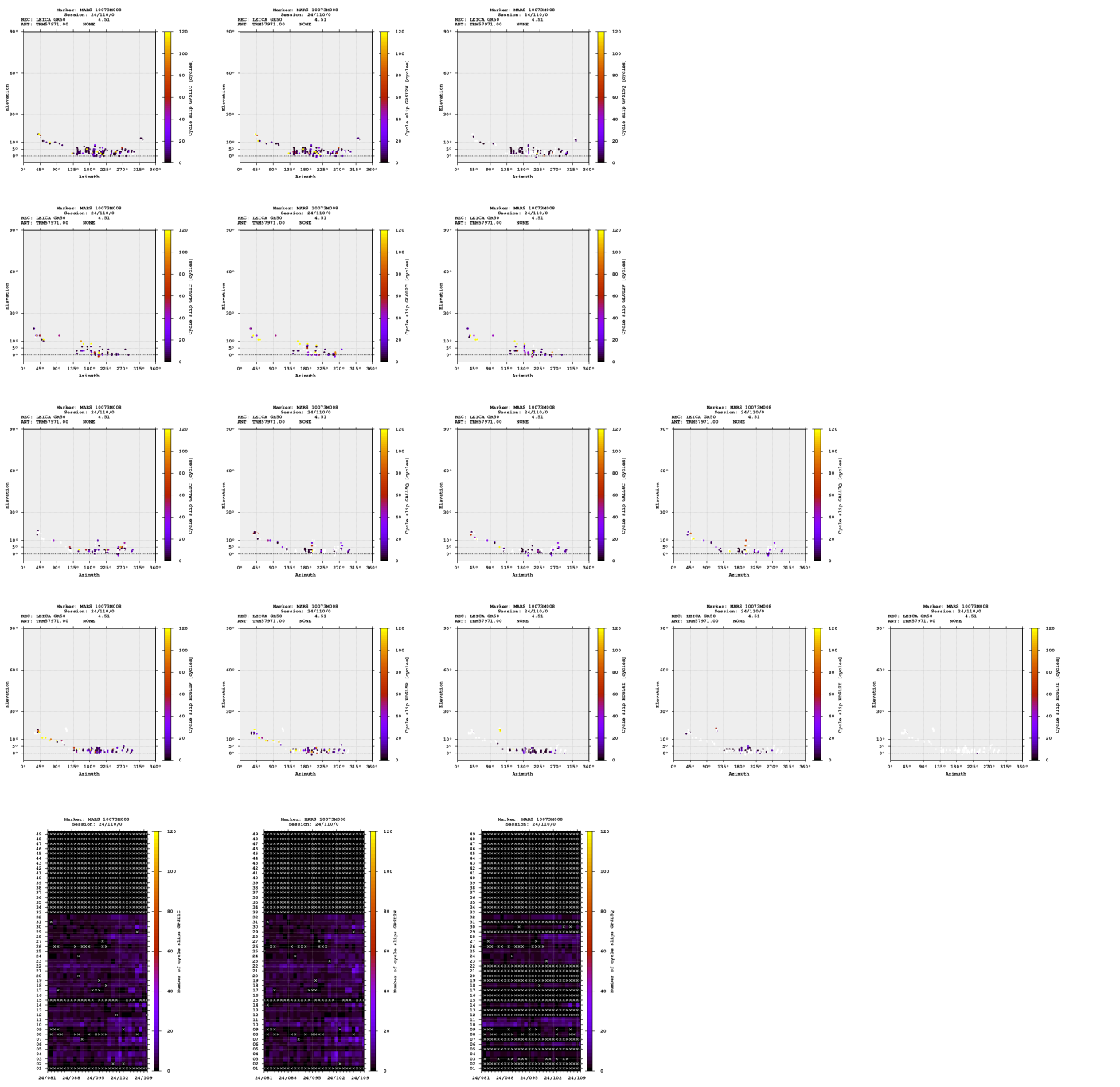


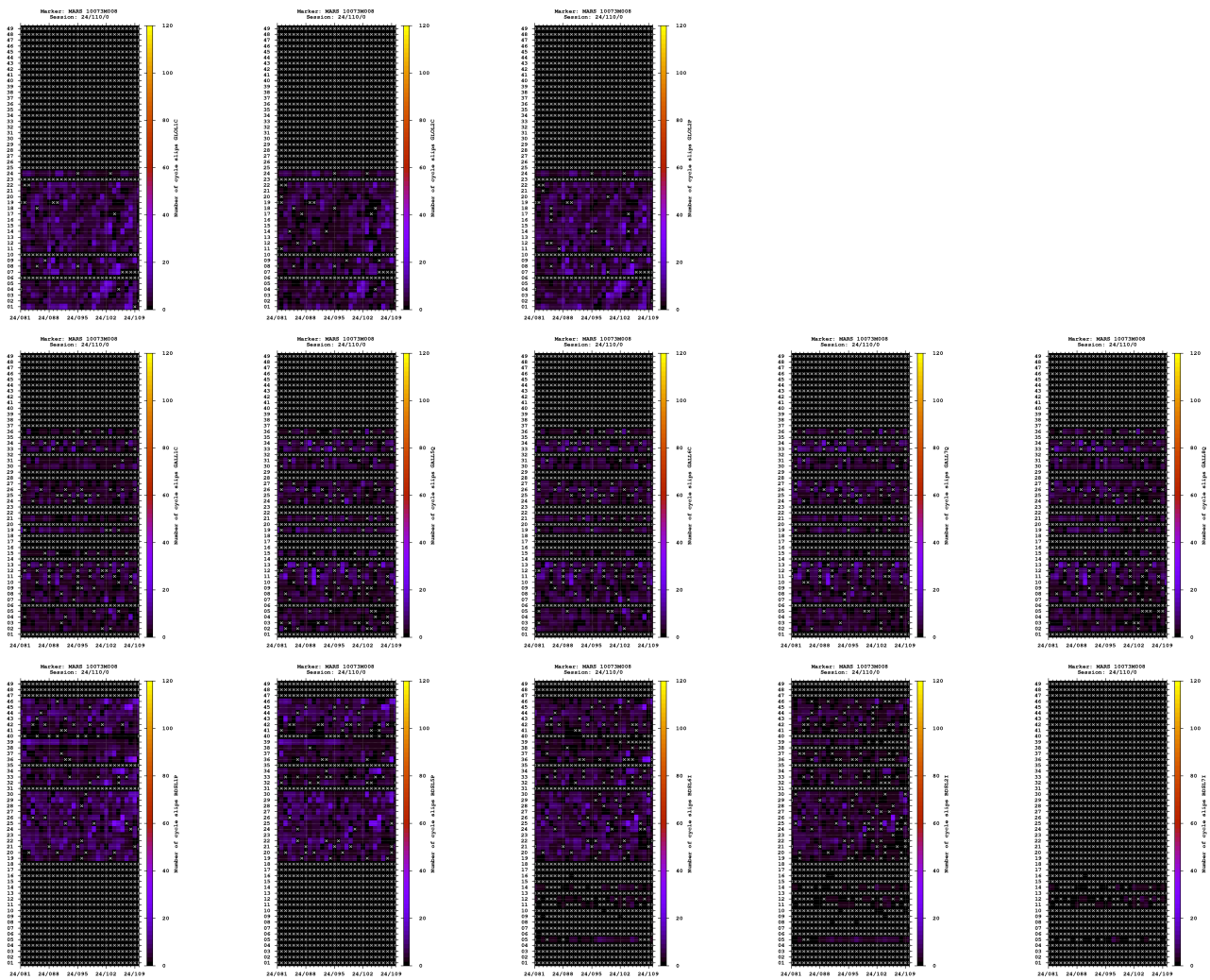


Observations

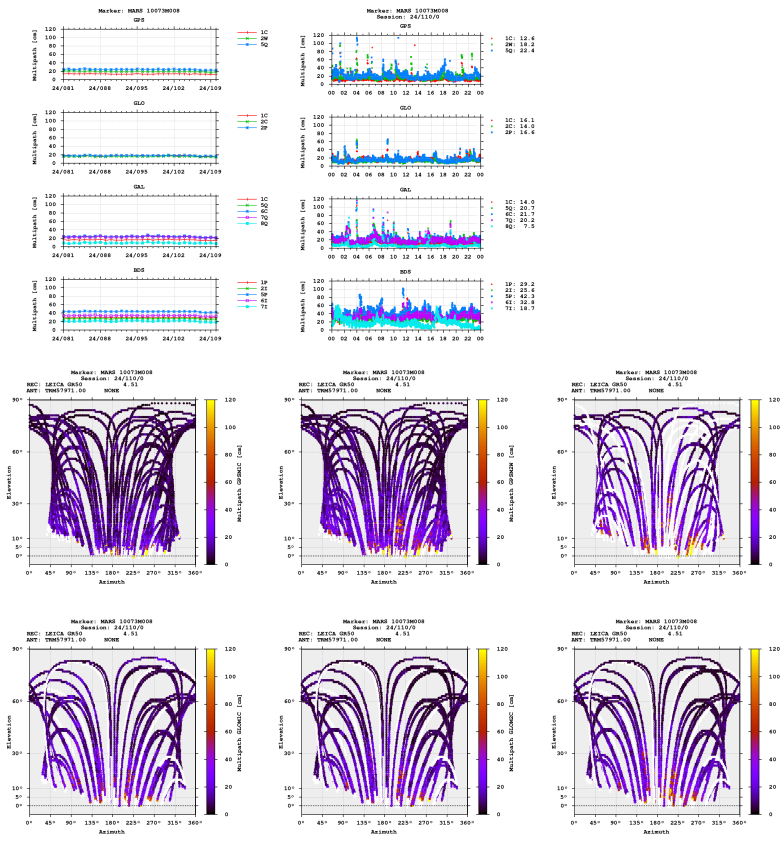


### Cycle slips





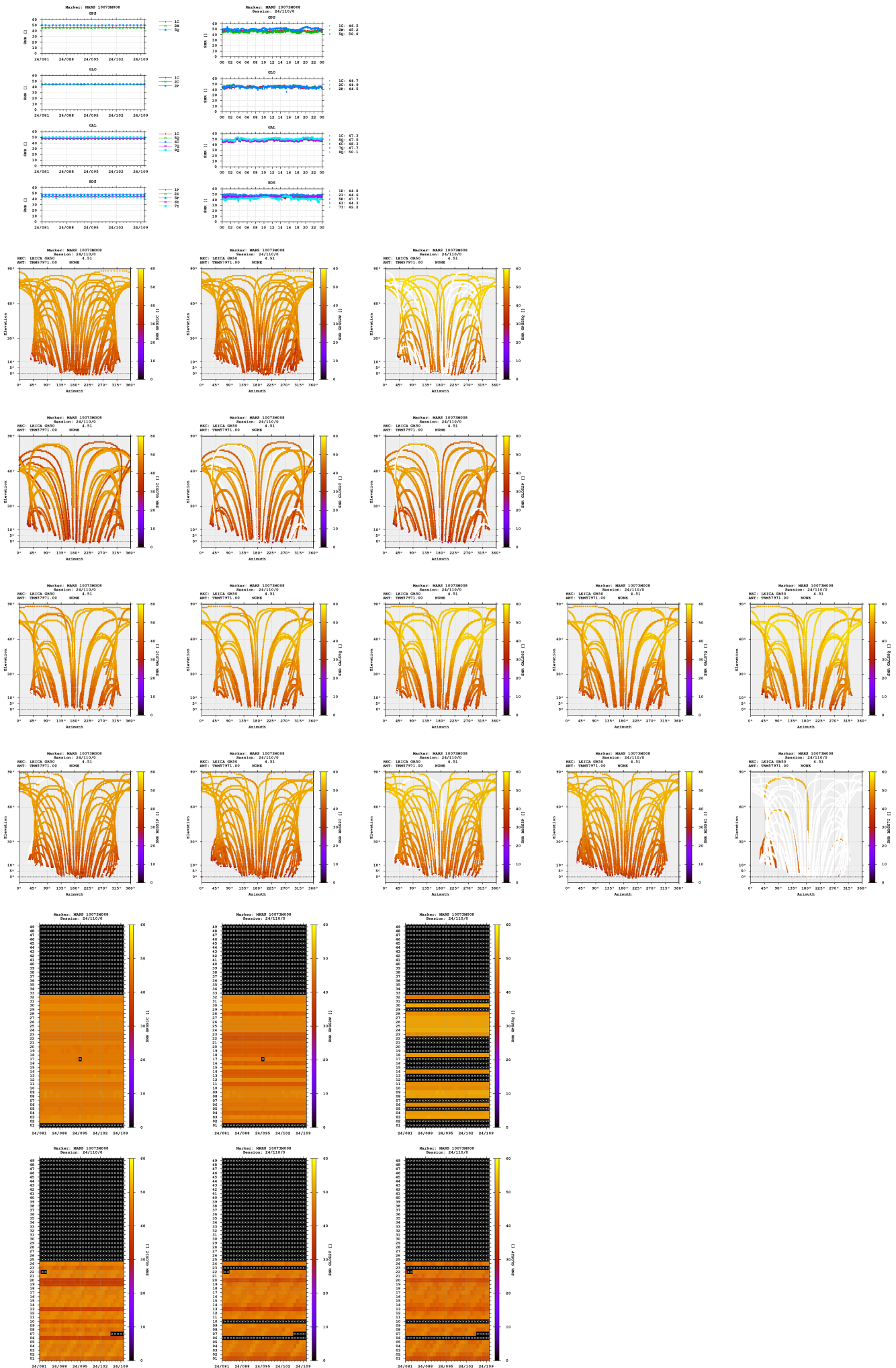
### Multipath

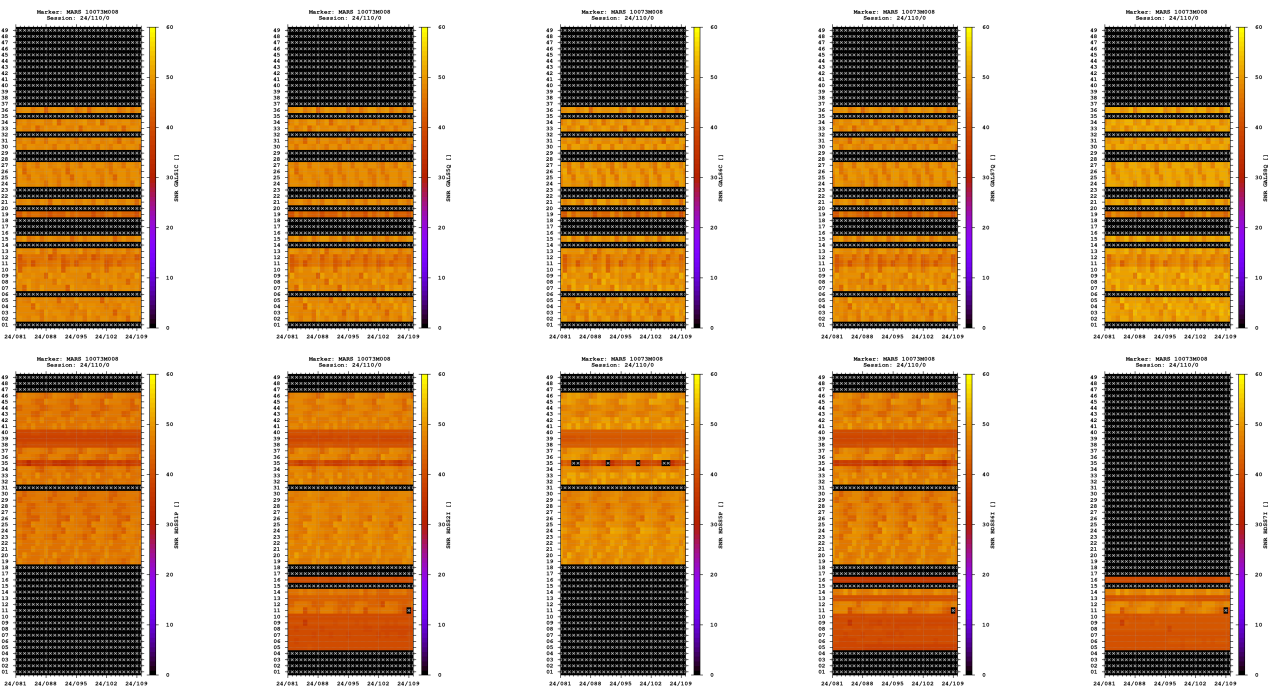




- The multipath is estimated as a standard deviation over a sequence of consecutive epochs.

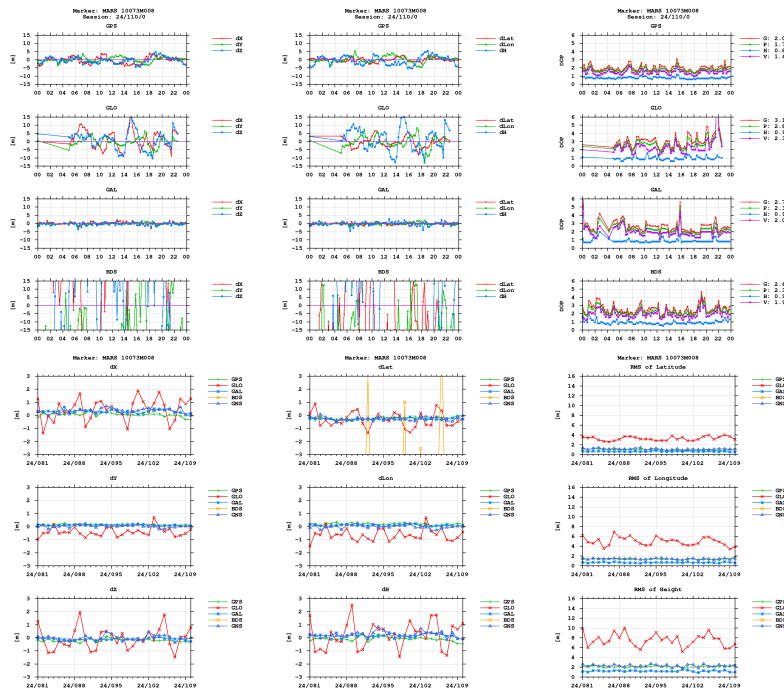
### Signal-to-noise ratio





**Estimates**

2024-04-19 00:00:00	GPS	4630531.7673	433946.5540	4350142.5986	43.278774940	5.353791397	61.0173
2024-04-19 00:00:00	GLO	4630533.3587	433946.2426	4350143.7328	43.278772652	5.353786132	62.5868
2024-04-19 00:00:00	GAL	4630532.2318	433946.5304	4350142.6739	43.278772593	5.353790574	61.4041
2024-04-19 00:00:00	BDS	4630574.3460	433916.2695	4350167.6063	43.278696545	5.353378218	109.6558



**Equipment**

2024-03-21 00:00:00 LEICA GR50 4.51 1834684 LEICA GR50

**Program info**

G-Nut/Anubis Free [3.8] Mar 3 2024 20:32:19 (Rev: 4233)