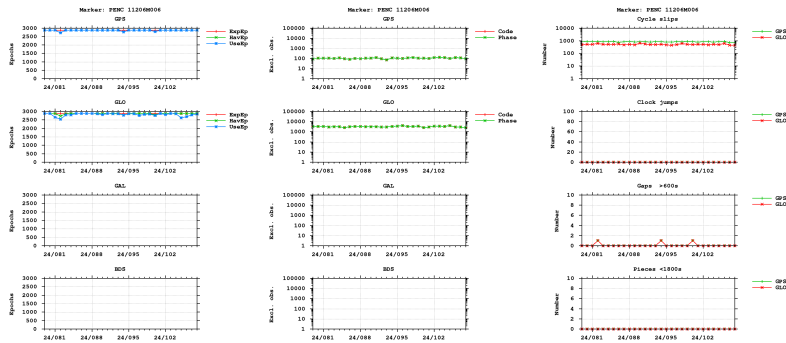


GNSS observation file monitoring for PENC

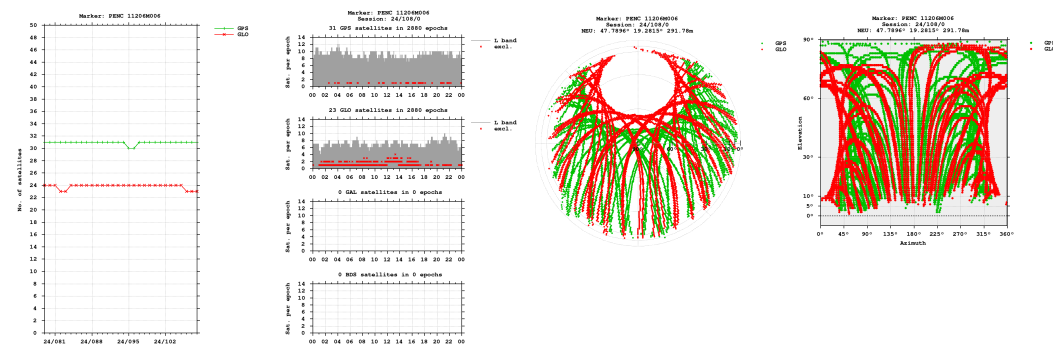
Last RINEX file: PENC1080.24D.Z
 RINEX version: 3.04
 Marker: PENC 11206M006
 Receiver: 352998 LEICA GRX1200GGPRO 9.20/3.822
 Antenna: 200219 LEIAT504GG LEIS

Epochs

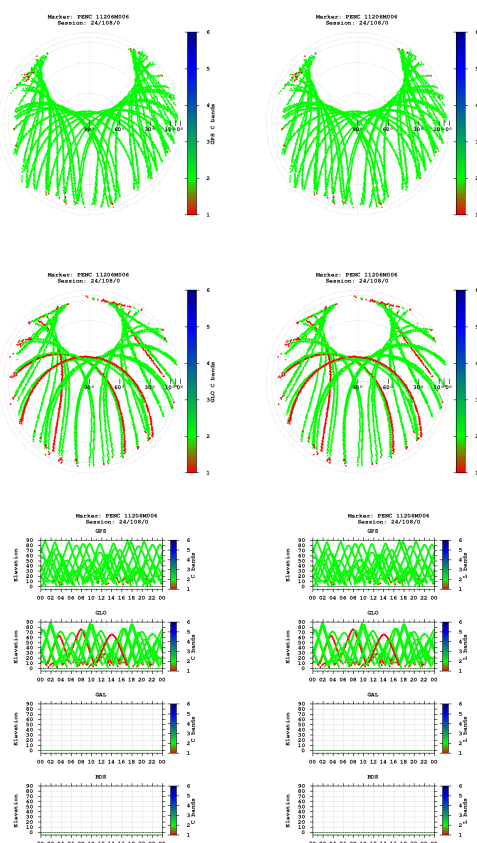


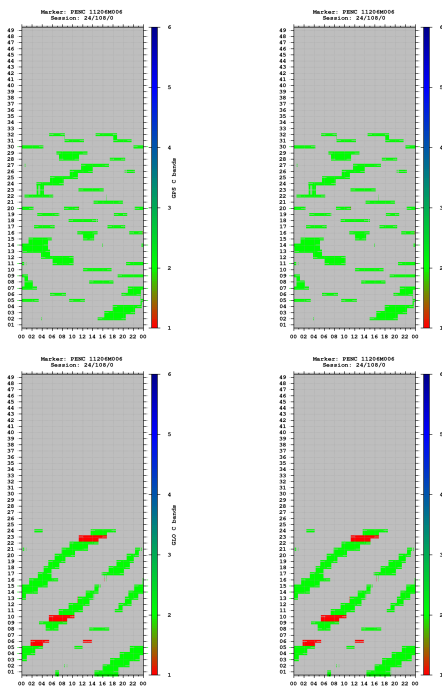
- "UseEp": The usable epoch is introduced if four or more satellites are observed with the minimum of two frequencies.
- Cycle slip detection algorithm is based on Melbourne-Wübbena and geometry-free LC.

Satellites

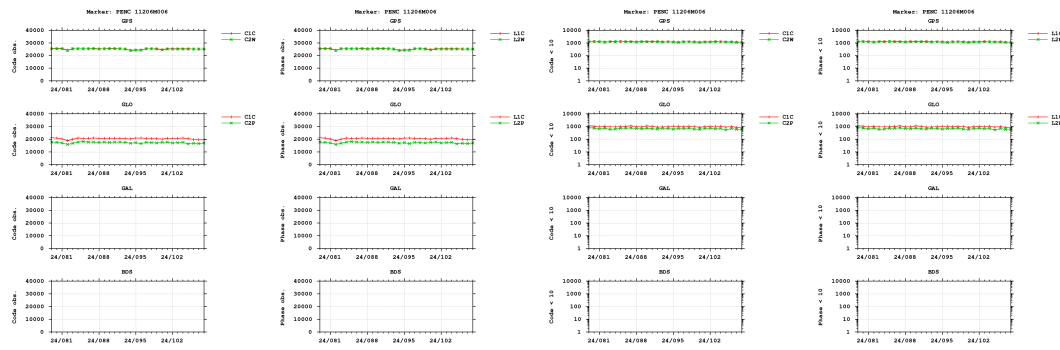


Bands

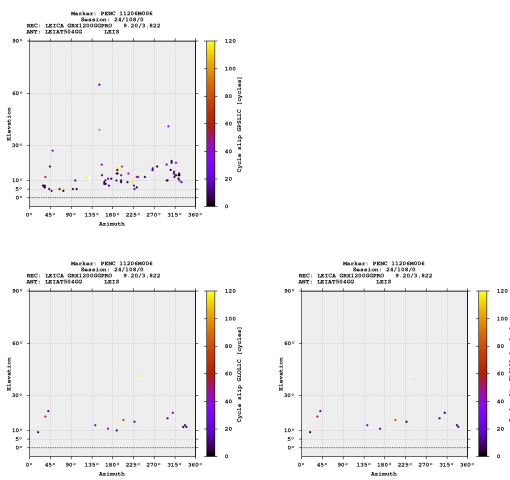


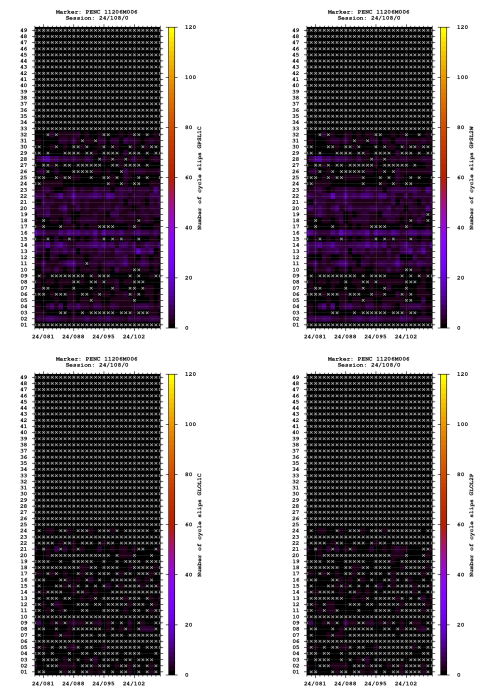


Observations

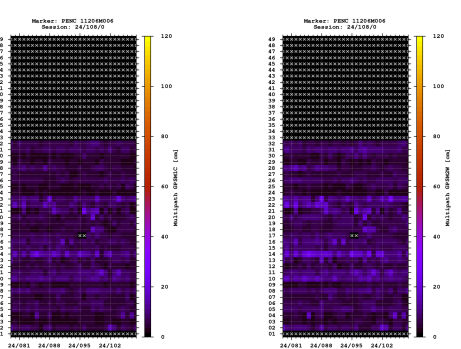
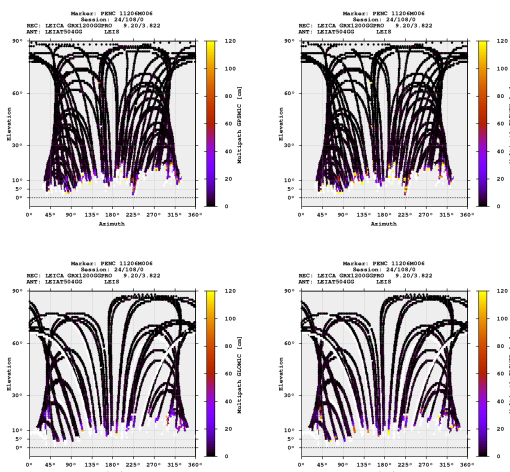
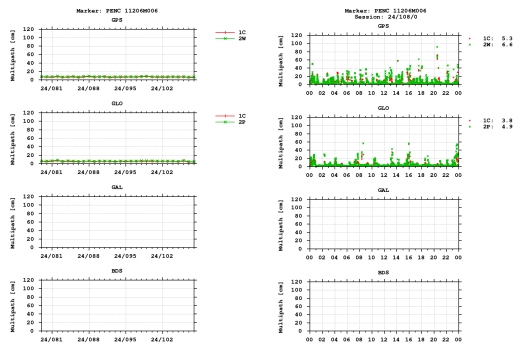


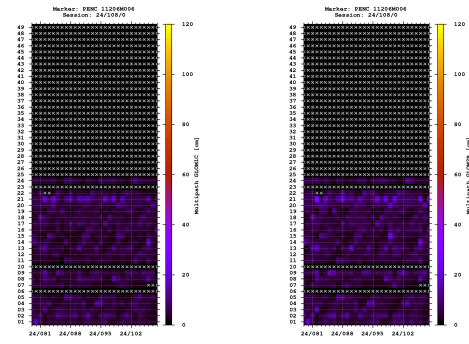
Cycle slips





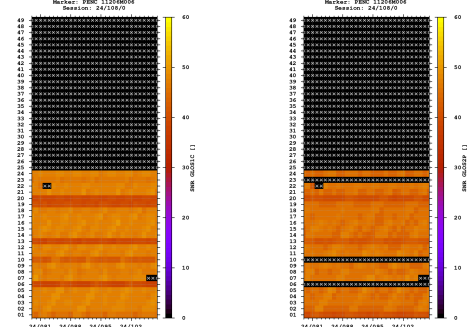
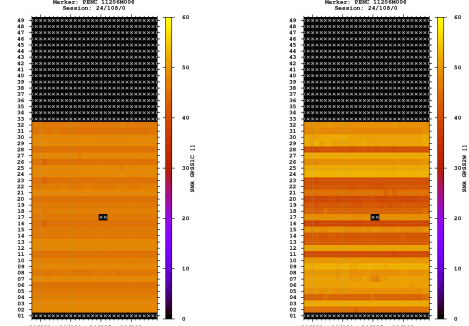
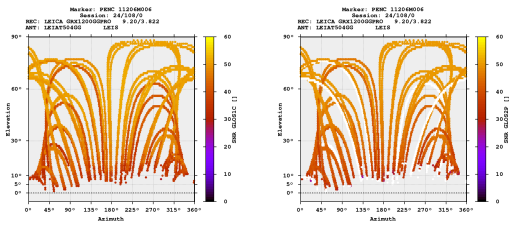
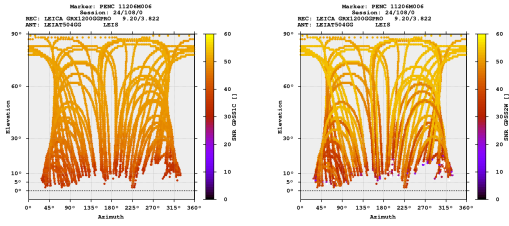
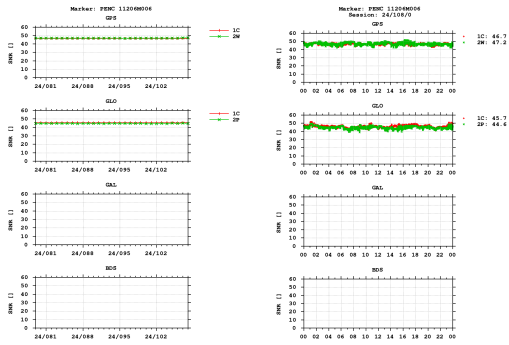
Multipath





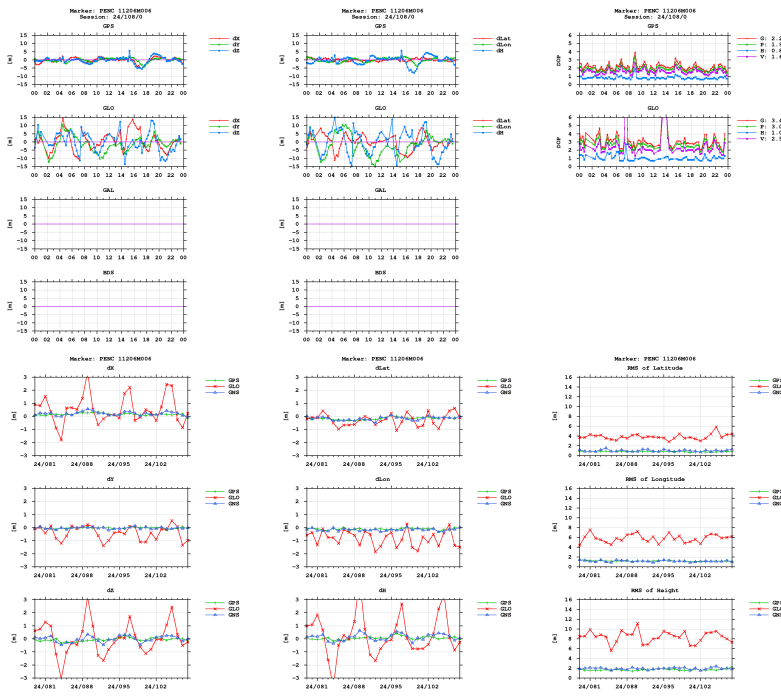
- The multipath is estimated as a standard deviation over a sequence of consecutive epochs.

Signal-to-noise ratio



Estimates

2024-04-17 00:00:00 GPS 4052448.7521 1417681.5320 4701407.3564 47.789608131 19.281537319 291.7082
2024-04-17 00:00:00 GLO 4052449.1304 1417680.6425 4701407.2683 47.789607301 19.281524186 291.5261



Equipment

2024-03-19 00:00:00 LEICA GRX1200GGPRO 9.20/3.822 352998 LEICA GRX1

Program info

G-Nut/Anubis Free [3.8] Mar 3 2024 20:32:19 (Rev: 4233)