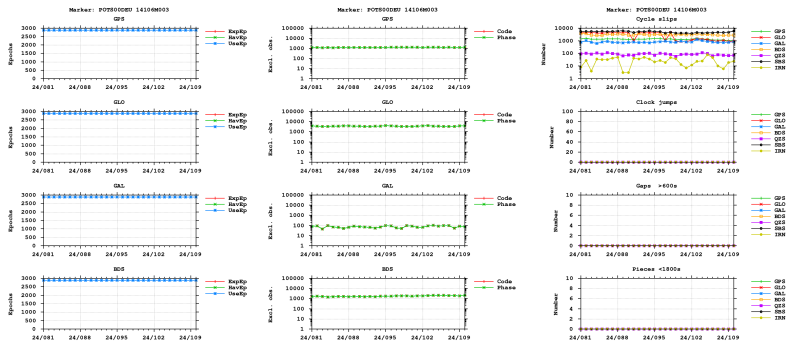


GNSS observation file monitoring for POTS

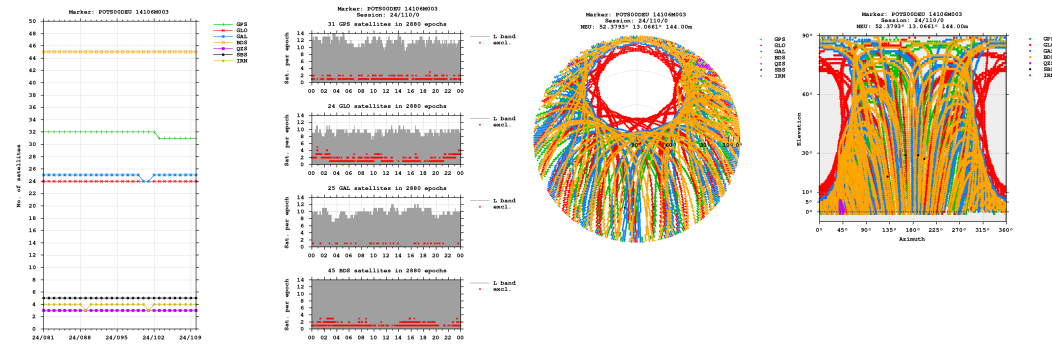
Last RINEX file: POTS1100.24D.Z
 RINEX version: 3.05
 Marker: POTS00DEU 14106M003
 Receiver: 4171773 JAVAD TRE_3 4.2.01-220630
 Antenna: 6077C JAVRINGANT_G5T NONE

Epochs

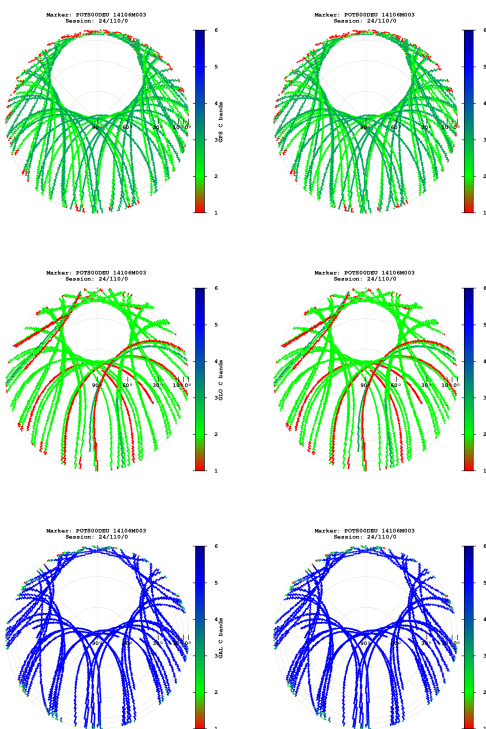


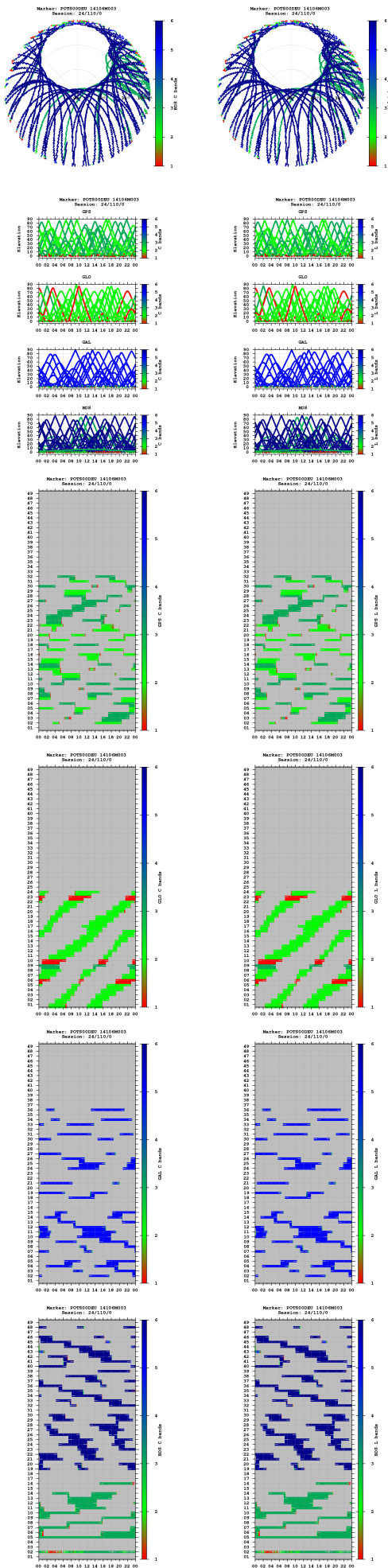
- "UseEp": The usable epoch is introduced if four or more satellites are observed with the minimum of two frequencies.
- Cycle slip detection algorithm is based on Melbourne-Wübbena and geometry-free LC.

Satellites

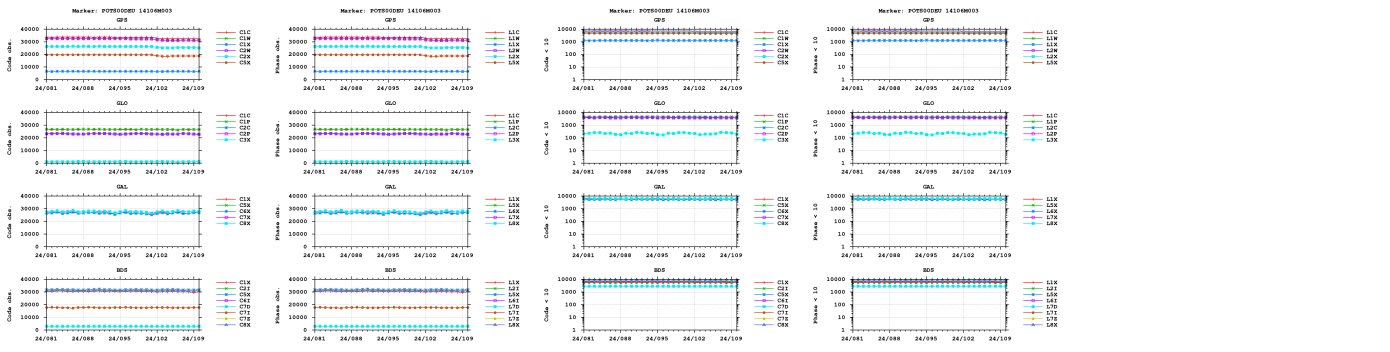


Bands

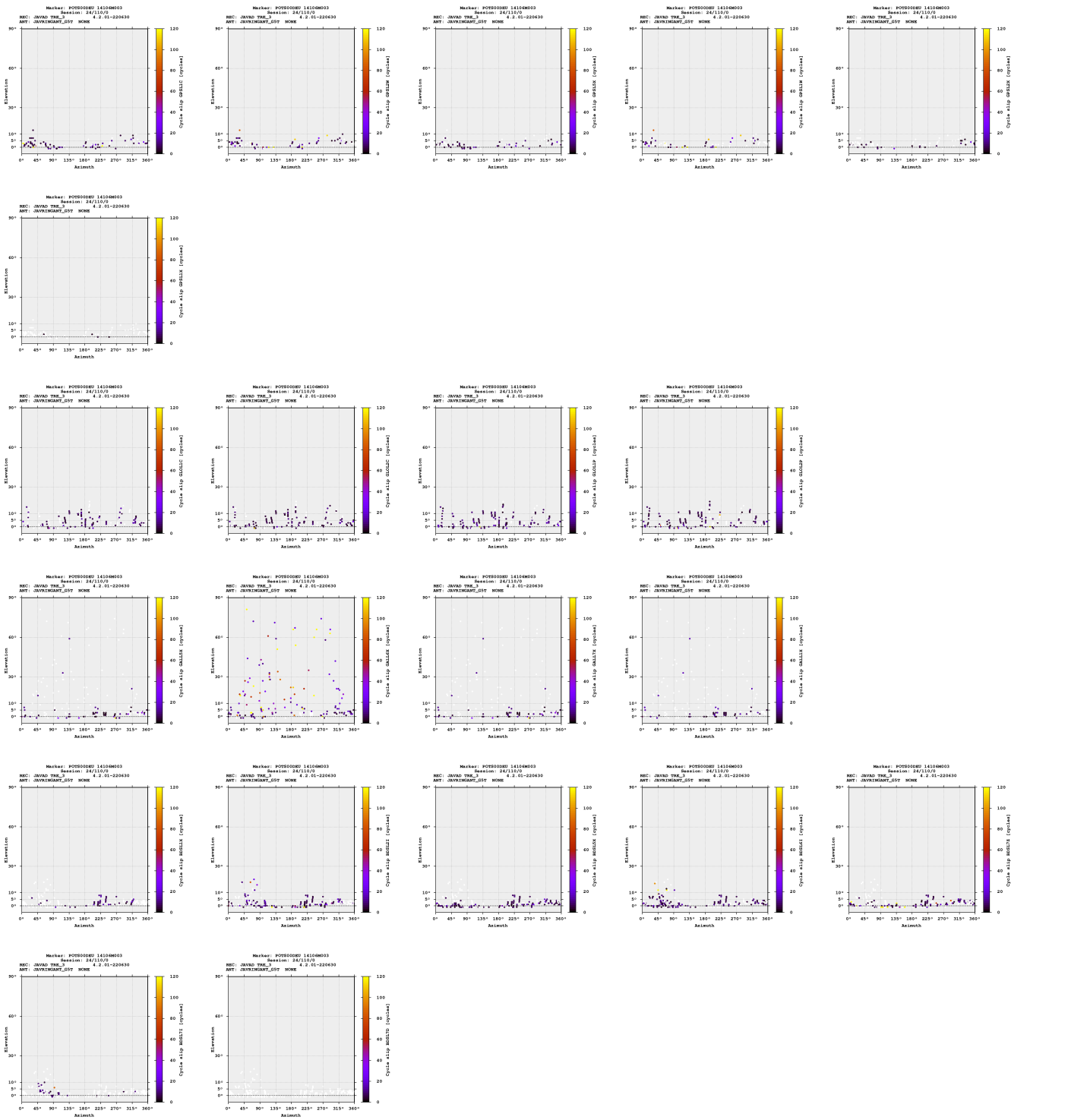


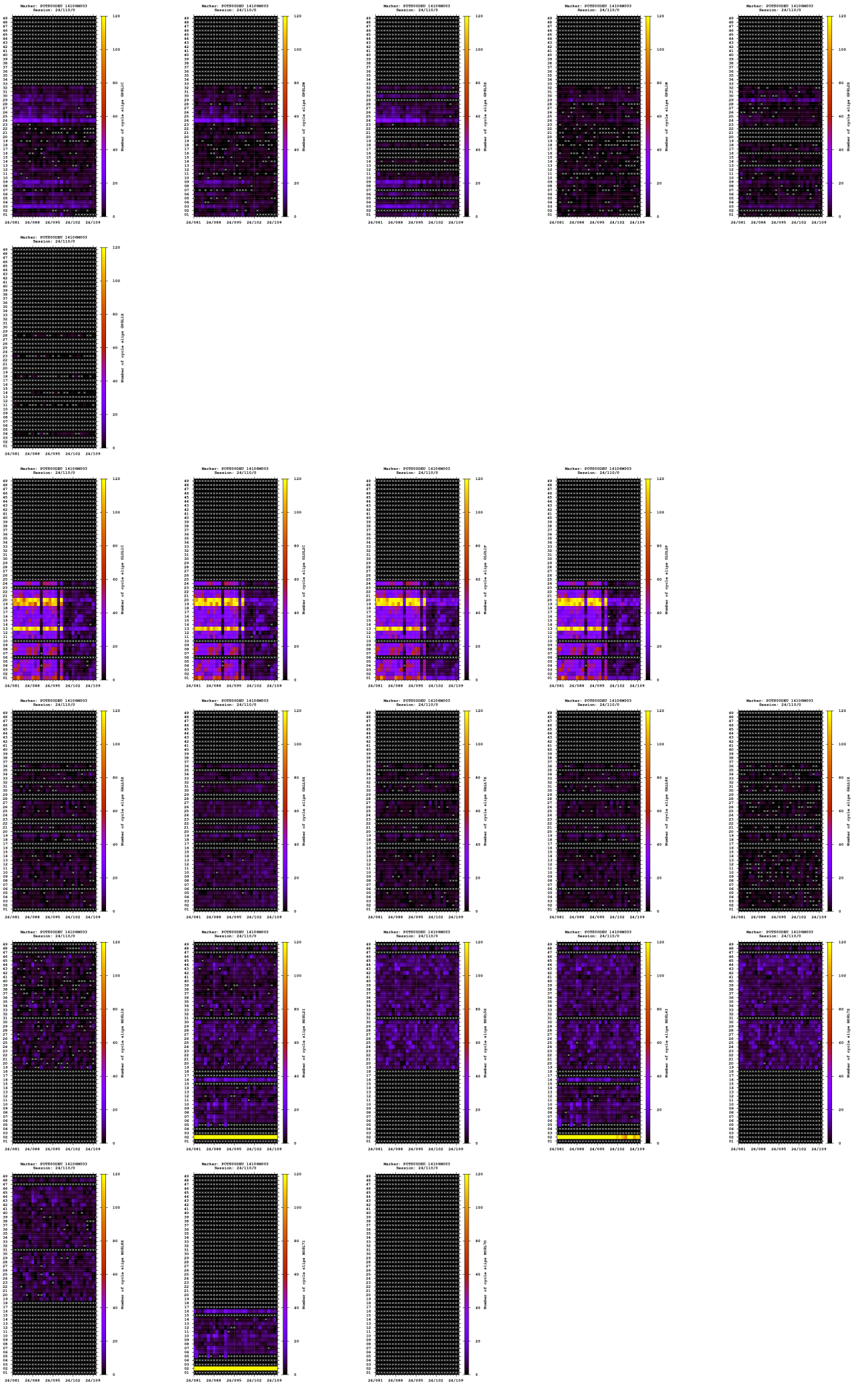


Observations

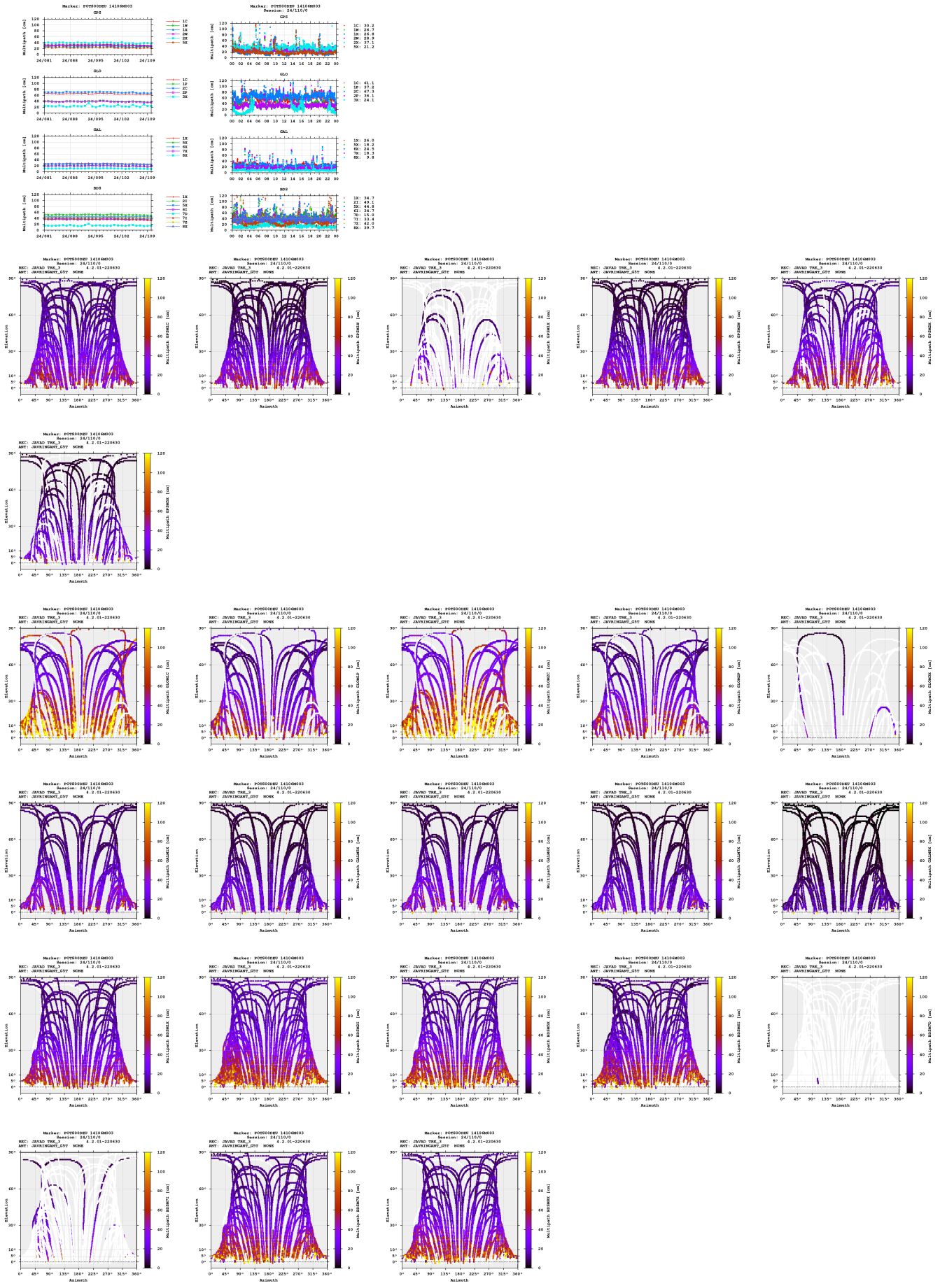


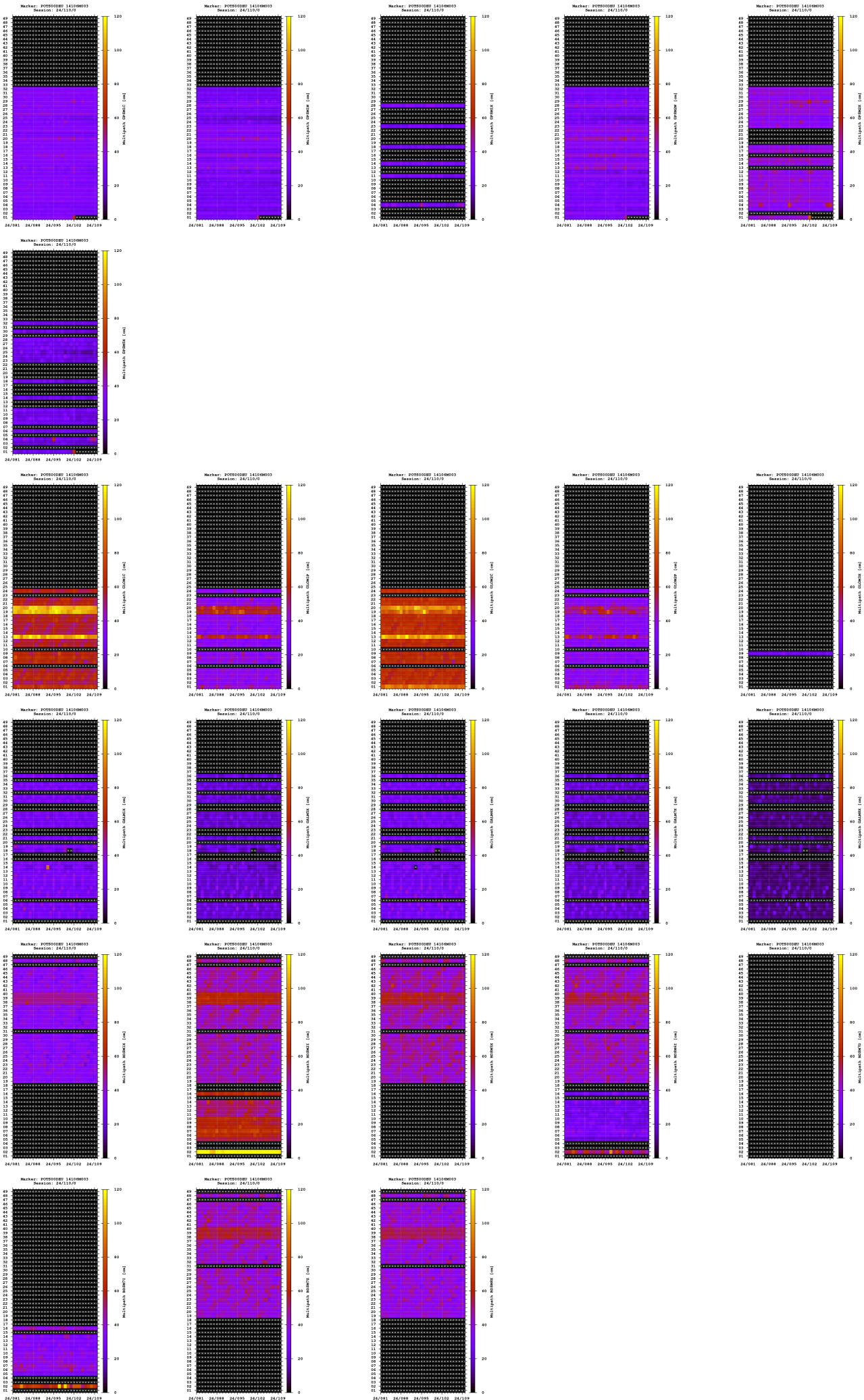
Cycle slips





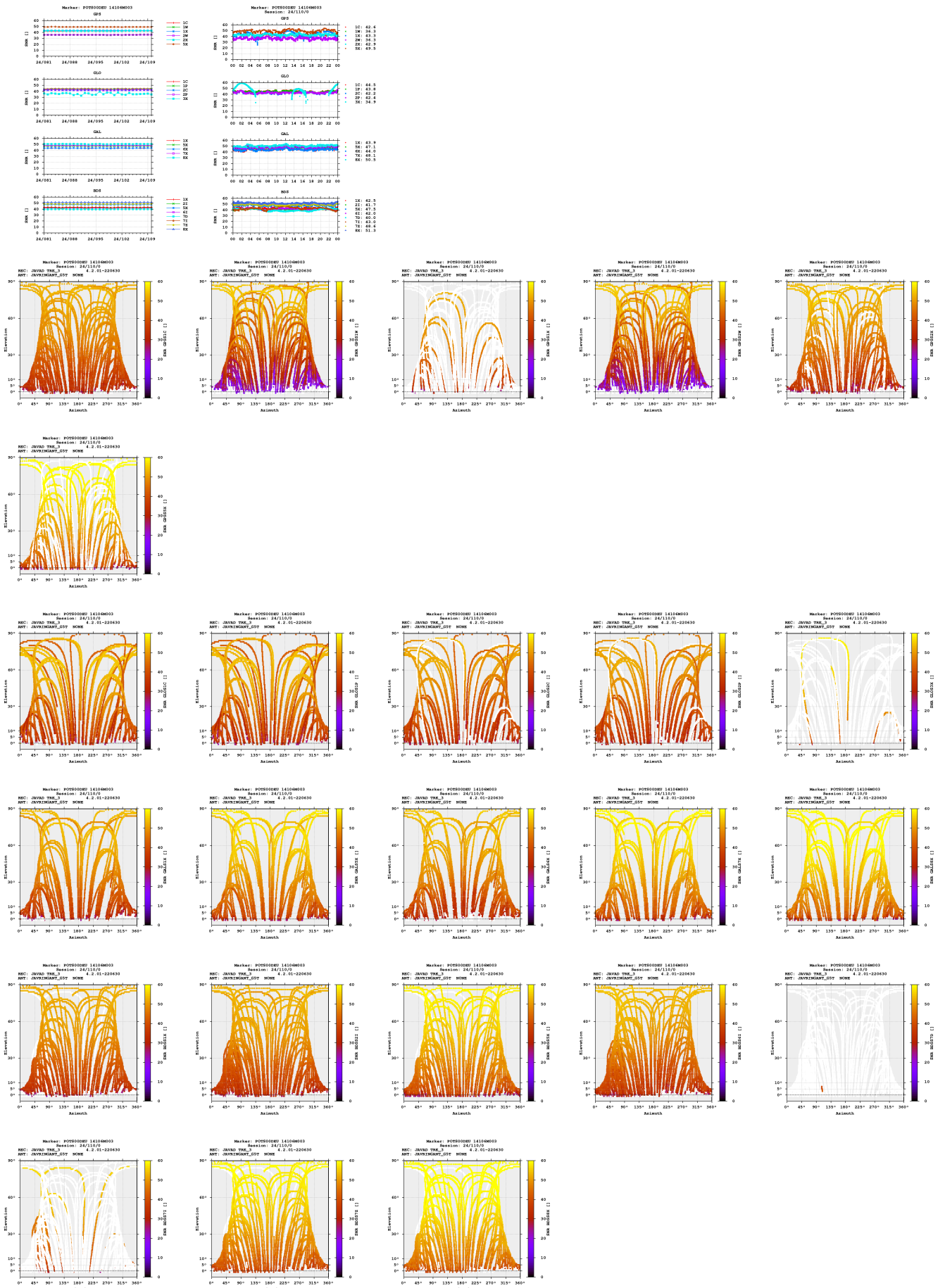
Multipath

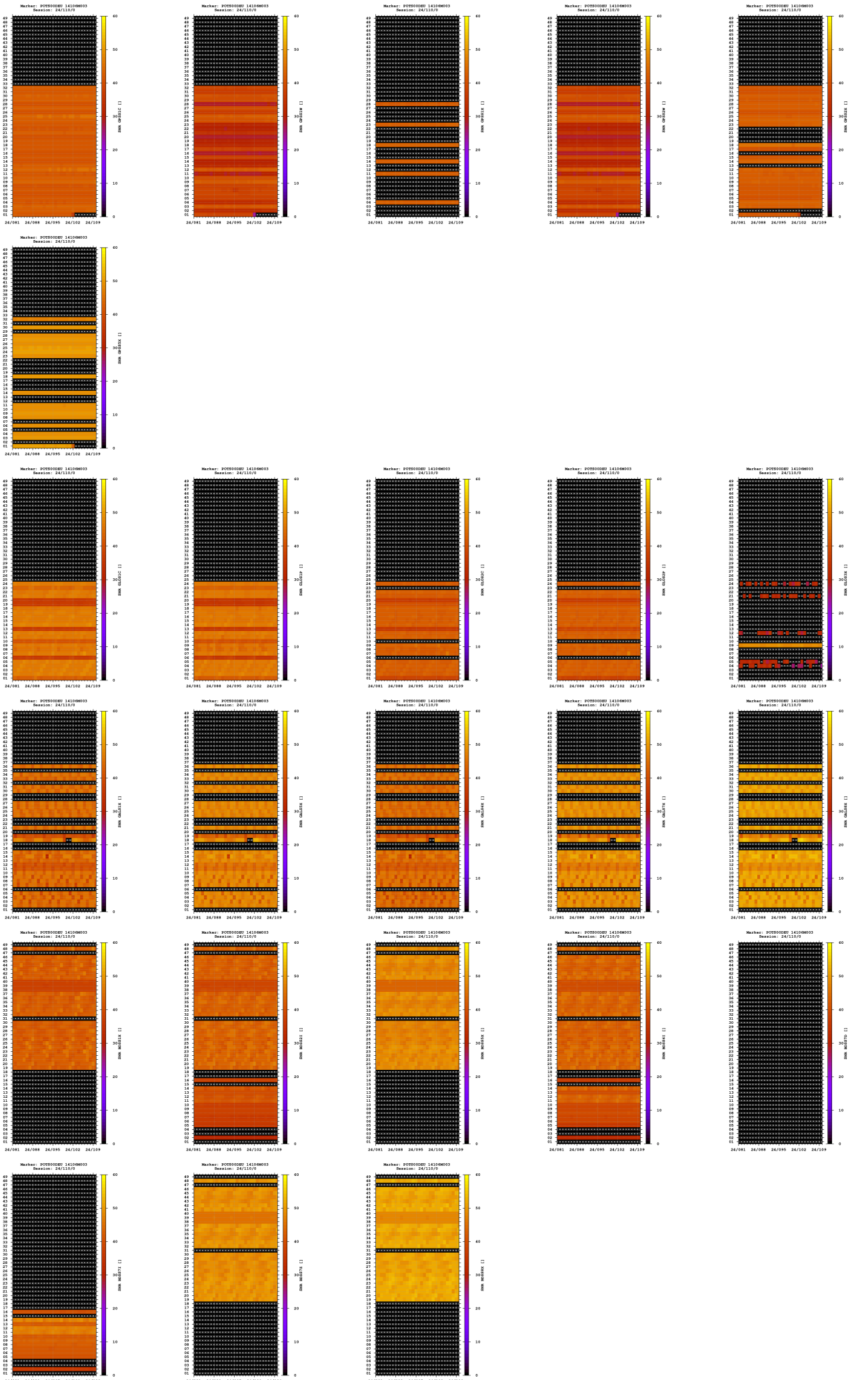




- The multipath is estimated as a standard deviation over a sequence of consecutive epochs.

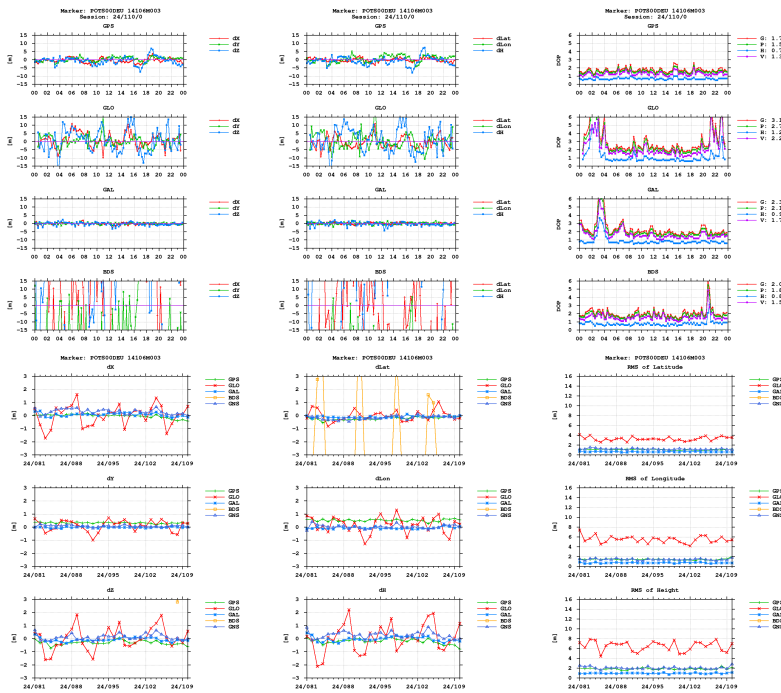
Signal-to-noise ratio





Estimates

2024-04-19 00:00:00	GPS	3800688.9207	882077.9718	5028790.3410	52.379295924	13.066101779	143.2084
2024-04-19 00:00:00	GLO	3800690.0580	882078.0045	5028791.5153	52.379295061	13.066098896	145.1696
2024-04-19 00:00:00	GAL	3800689.2028	882077.7167	5028790.7903	52.379296940	13.066097483	143.7889
2024-04-19 00:00:00	BDS	3800720.4561	882039.0902	5028807.5350	52.379215942	13.065455259	168.1763



Equipment

2024-03-21 00:00:00 JAVAD TRE_3 4.2.01-220630 4171773 JAVAD TRE_

Program info

G-Nut/Anubis Free [3.8] Mar 3 2024 20:32:19 (Rev: 4233)