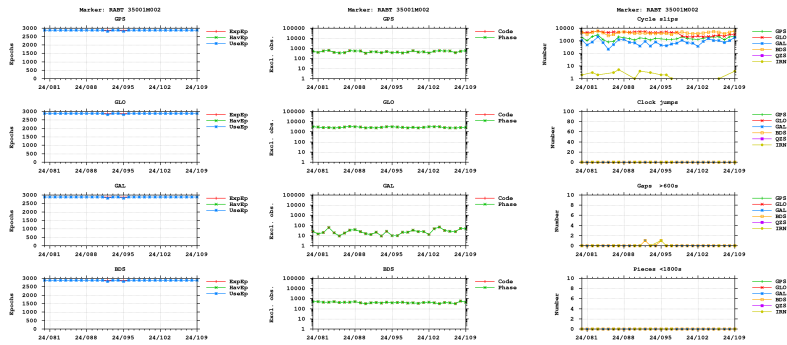


GNSS observation file monitoring for RABT

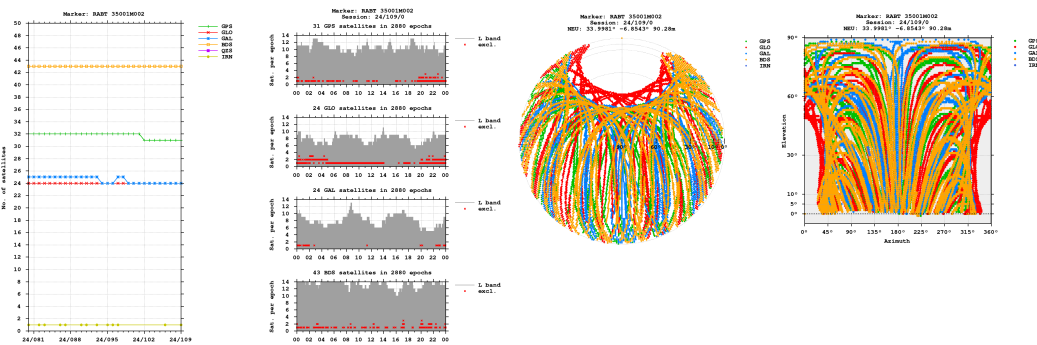
Last RINEX file: RABT1090.24D.Z
 RINEX version: 3.04
 Marker: RABT 35001M002
 Receiver: 02334 JAVAD TRE_3 DELTA 4.1.01
 Antenna: 0220148021 TRM29659.00 SCIS

Epochs

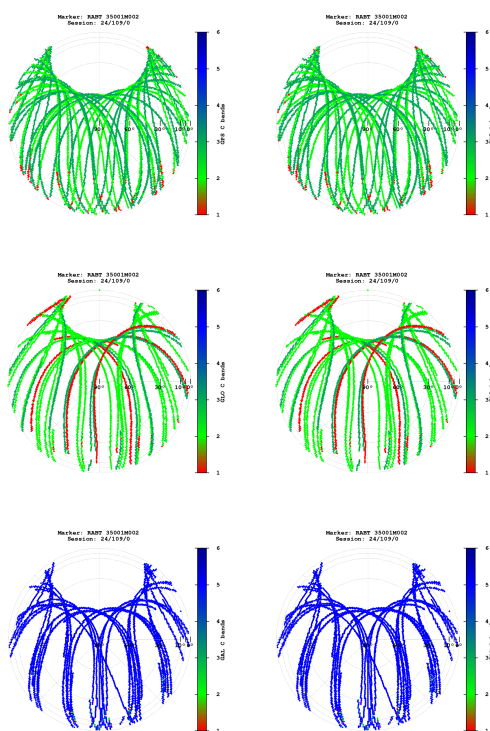


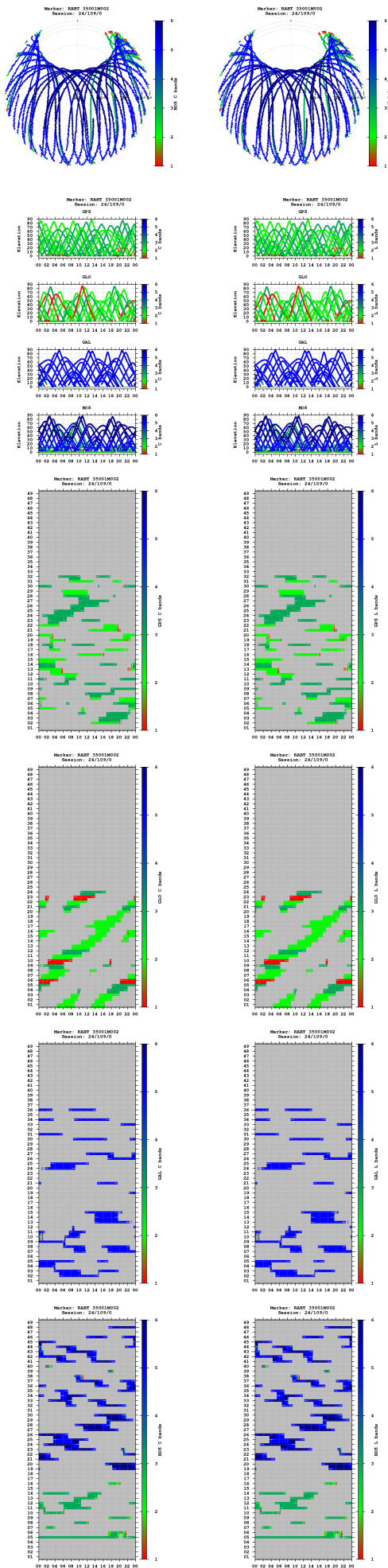
- "UseEp": The usable epoch is introduced if four or more satellites are observed with the minimum of two frequencies.
- Cycle slip detection algorithm is based on Melbourne-Wübbena and geometry-free LC.

Satellites

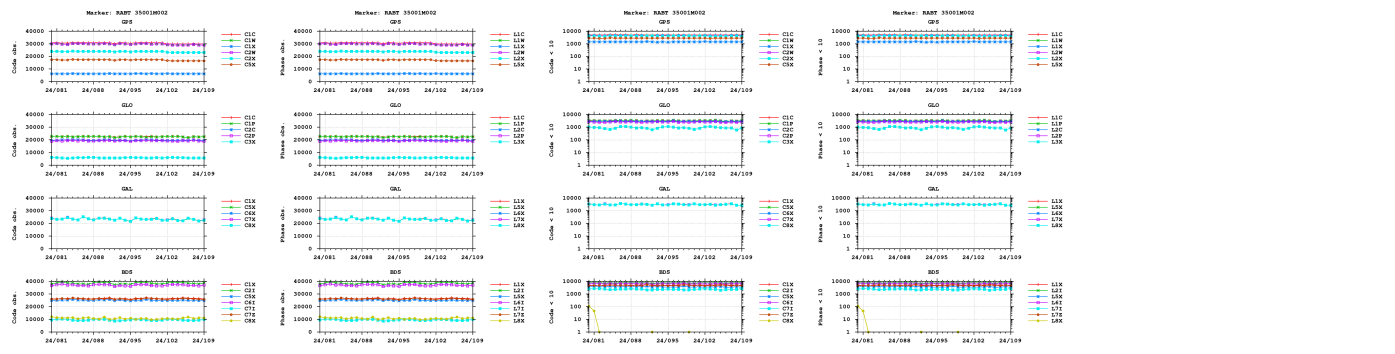


Bands

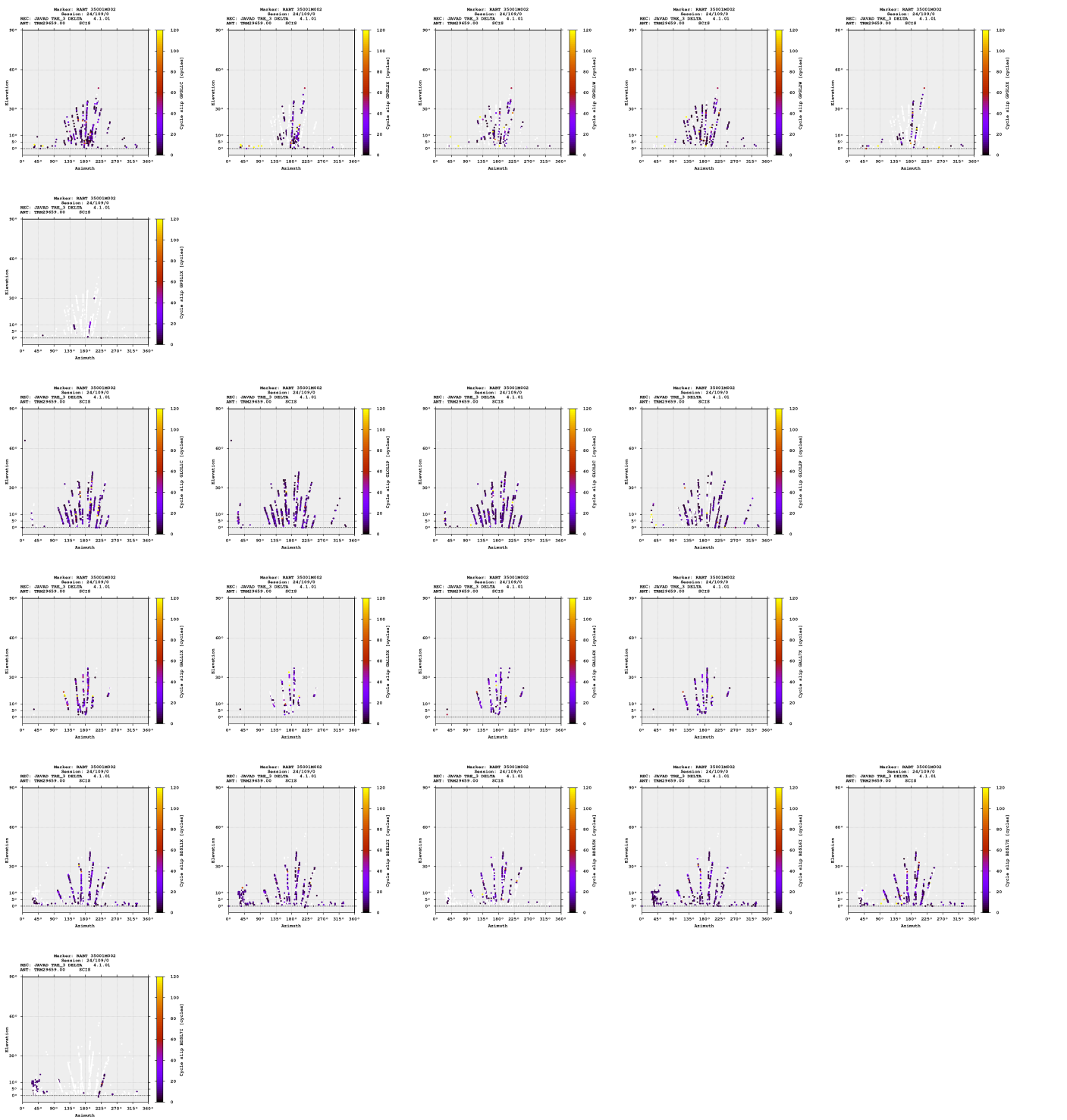


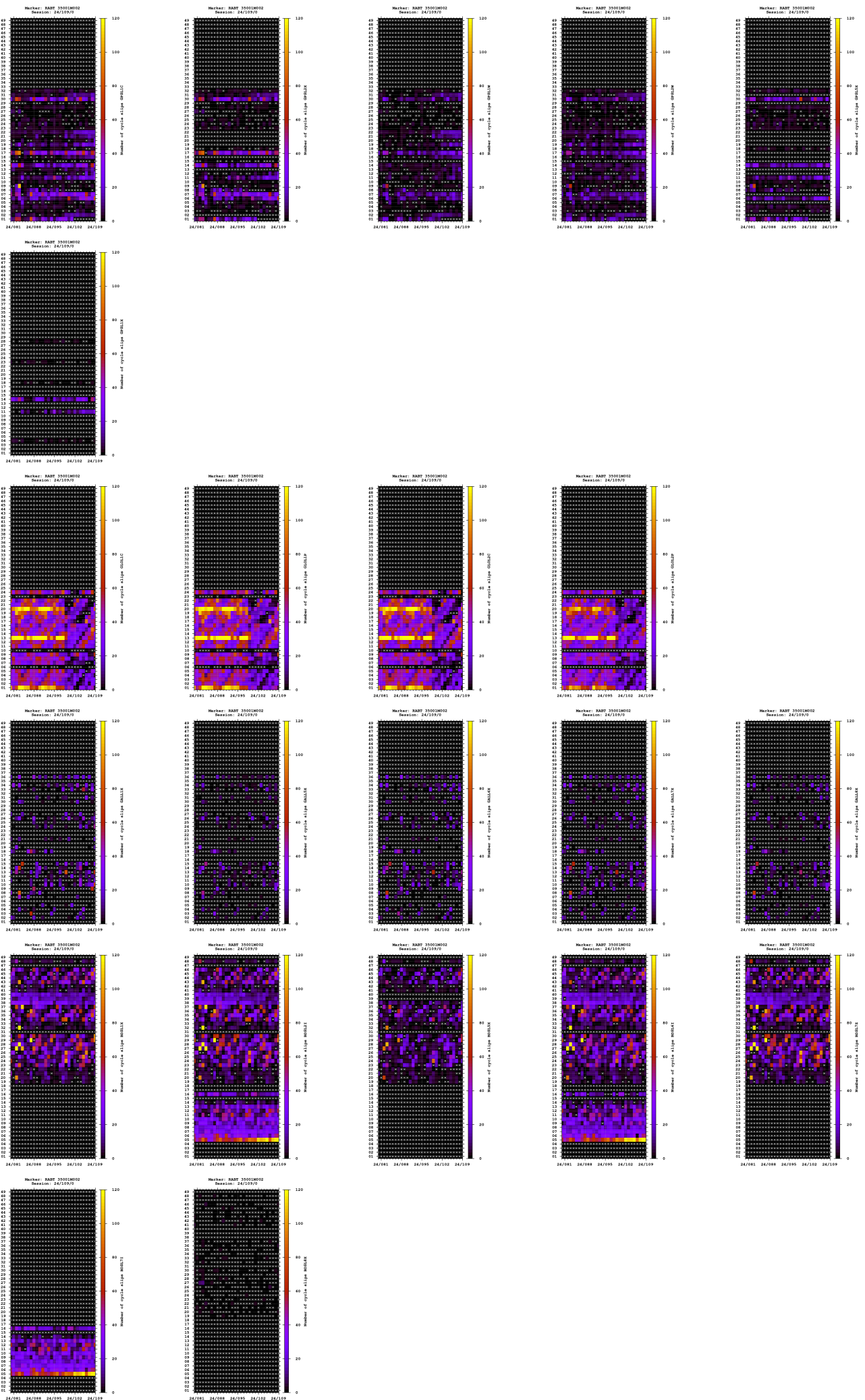


Observations

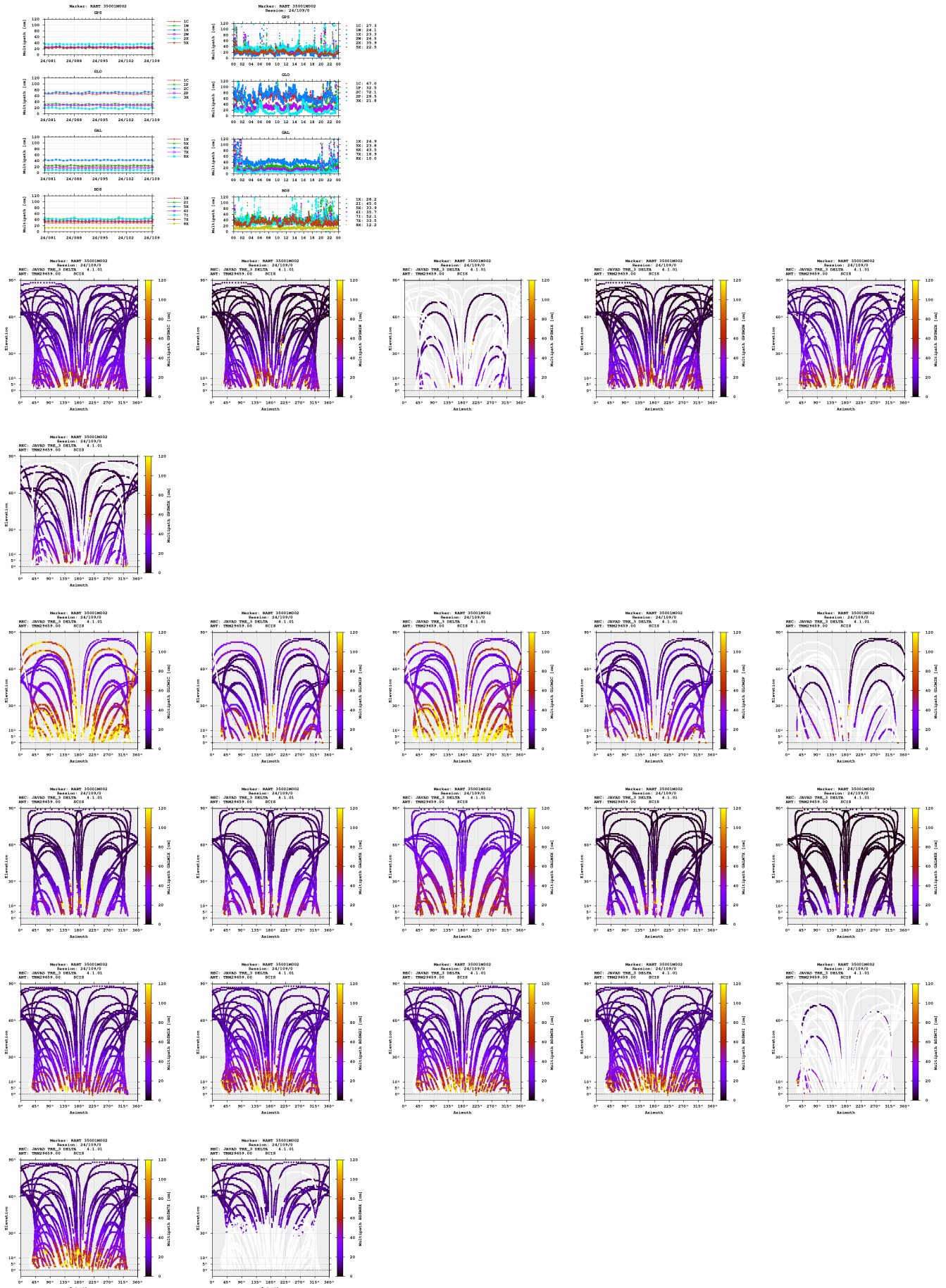


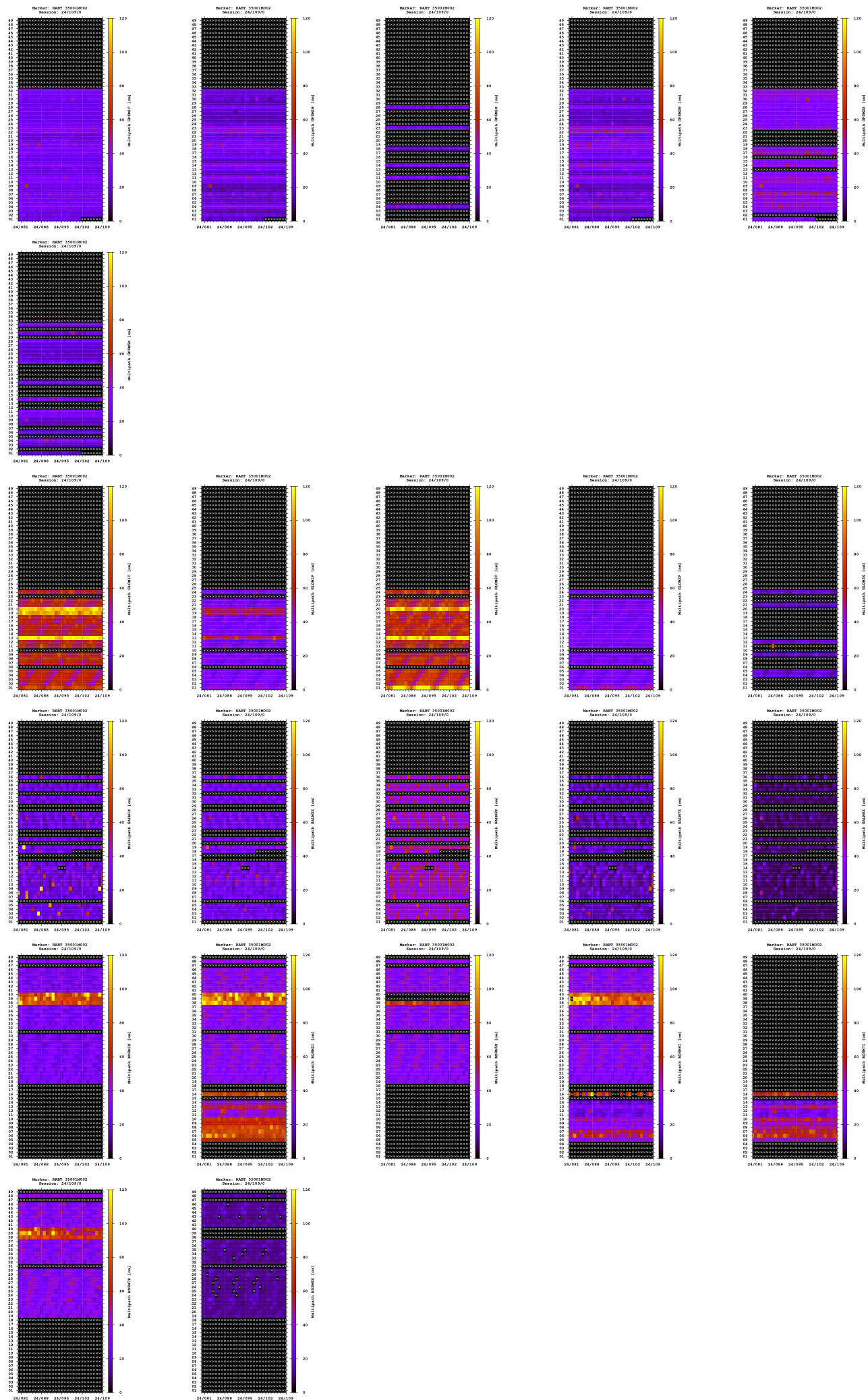
Cycle slips





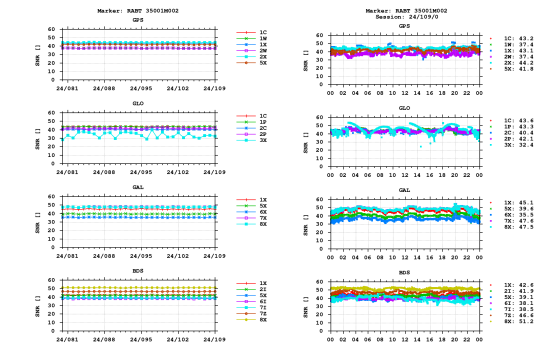
Multipath

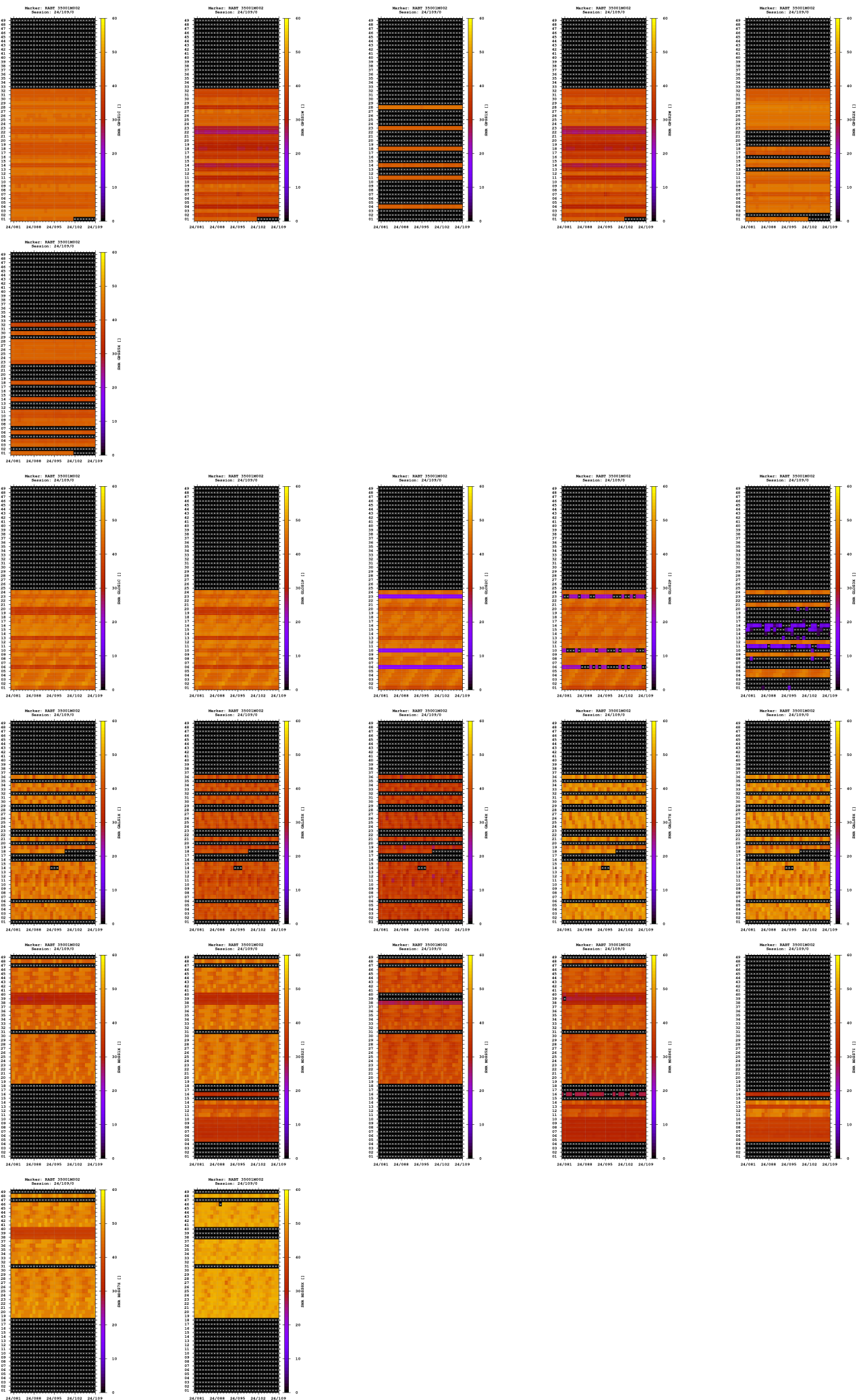




- The multipath is estimated as a standard deviation over a sequence of consecutive epochs.

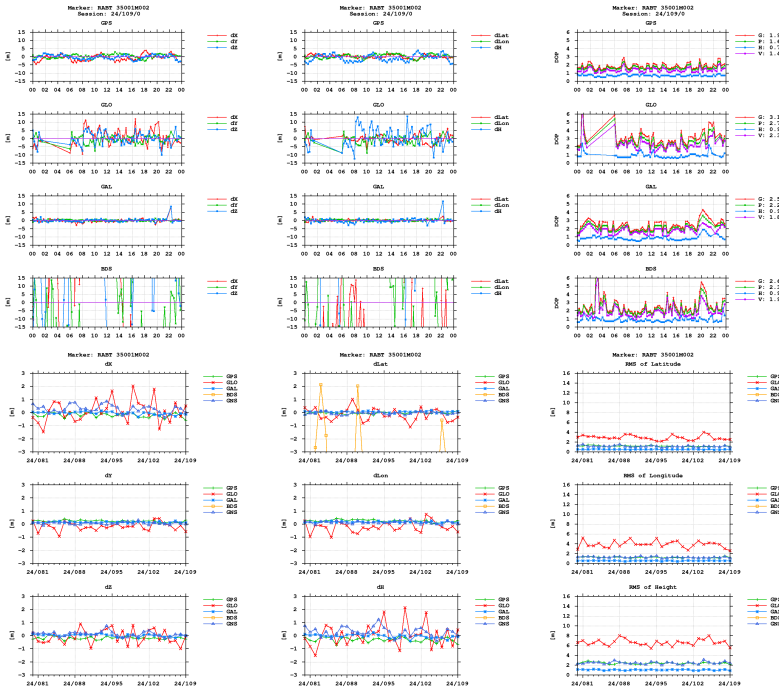
Signal-to-noise ratio





Estimates

2024-04-18 00:00:00	GPS	5255617.0662	-631745.2398	3546322.6604	33.998107779	353.145714702	89.6066
2024-04-18 00:00:00	GLO	5255618.1722	-631746.1127	3546322.8816	33.998103372	353.145706750	90.7270
2024-04-18 00:00:00	GAL	5255617.5354	-631745.4315	3546322.9099	33.998107171	353.145713133	90.1845
2024-04-18 00:00:00	BDS	5255696.4781	-631775.1762	3546359.2453	33.997959259	353.145486016	175.4269



Equipment

2024-03-20 00:00:00 JAVAD TRE_3 DELTA 4.1.01 02334 JAVAD TRE_

Program info

G-Nut/Anubis Free [3.8] Mar 3 2024 20:32:19 (Rev: 4233)