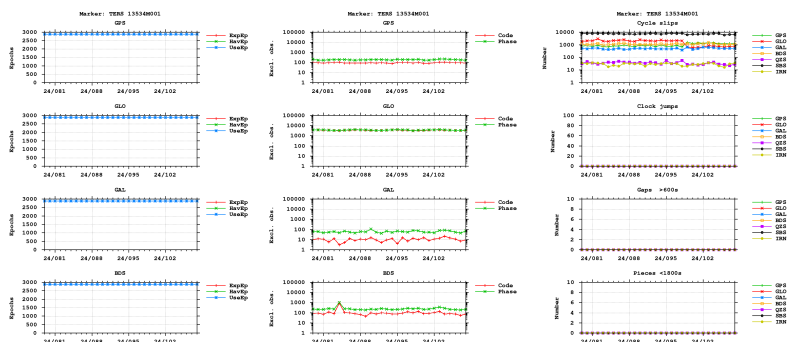


GNSS observation file monitoring for TERS

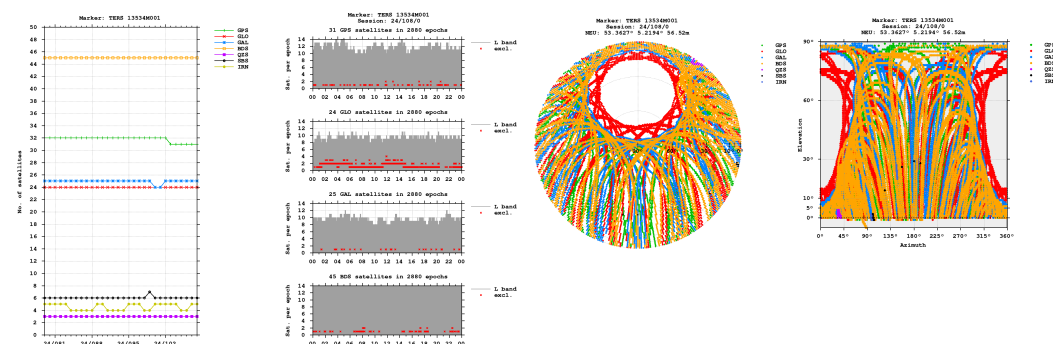
Last RINEX file: TERS1080.24D.Z
 RINEX version: 3.04
 Marker: TERS 13534M001
 Receiver: 3048026 SEPT POLARX5E 5.5.0
 Antenna: 726700 LEIAR25.R4 LEIT

Epochs

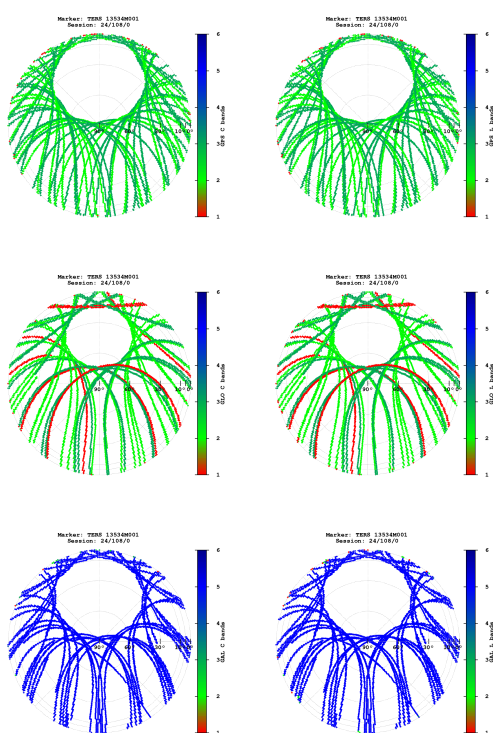


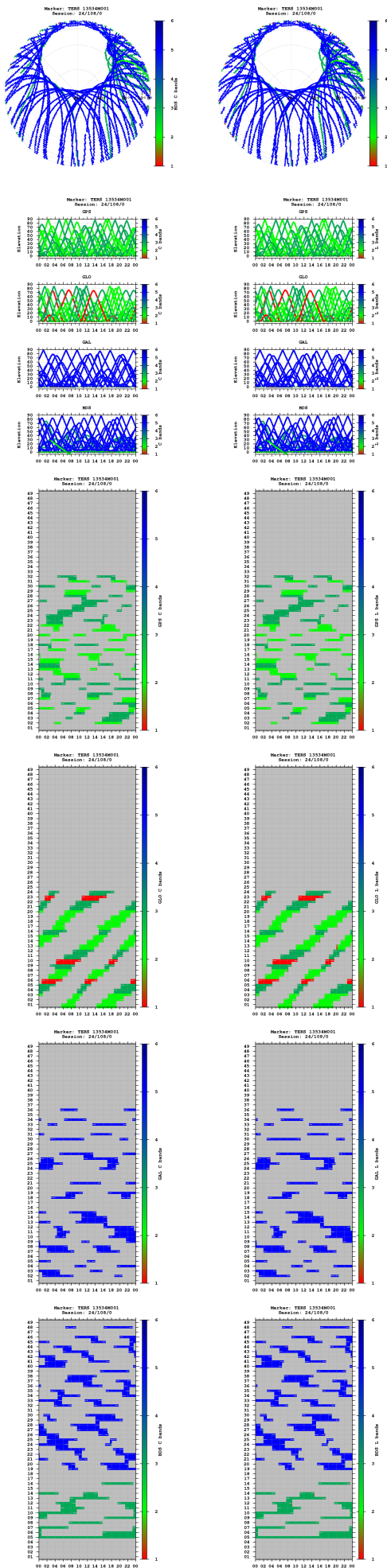
- "UseEp": The usable epoch is introduced if four or more satellites are observed with the minimum of two frequencies.
- Cycle slip detection algorithm is based on Melbourne-Wübbena and geometry-free LC.

Satellites

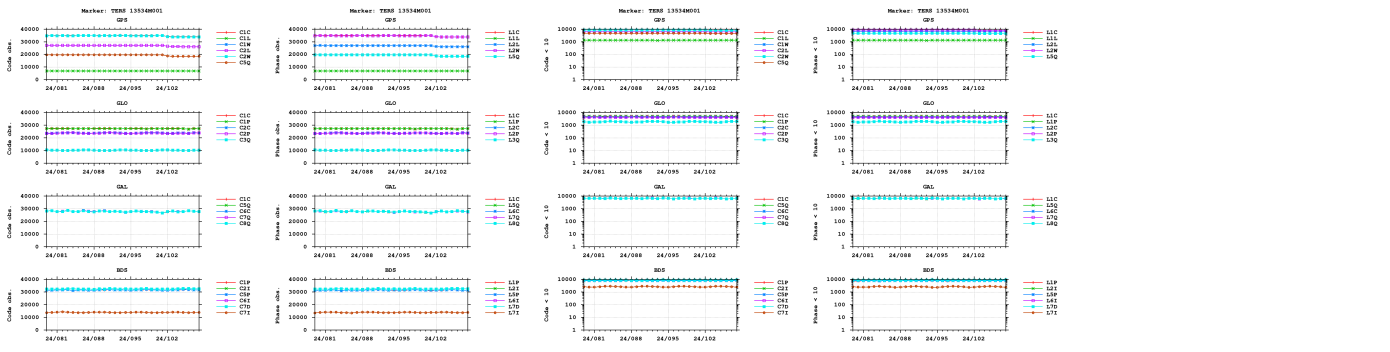


Bands

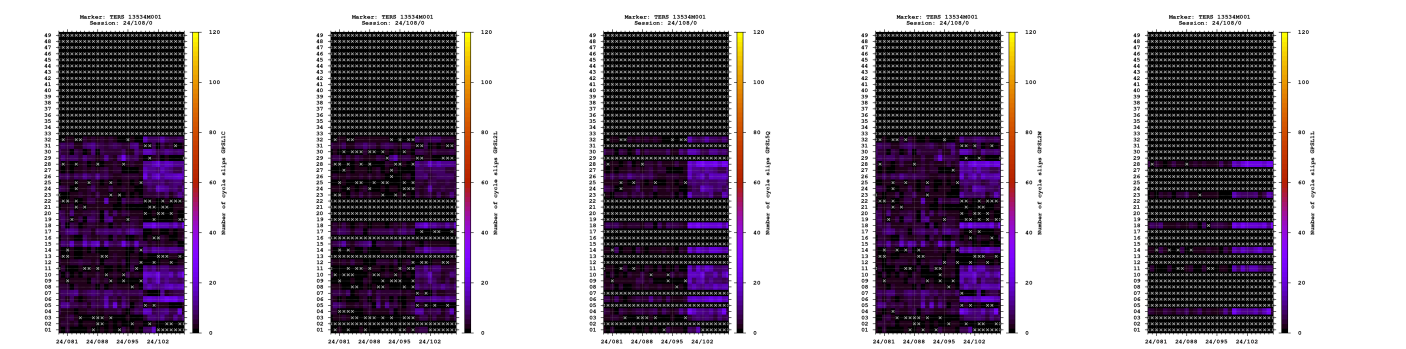
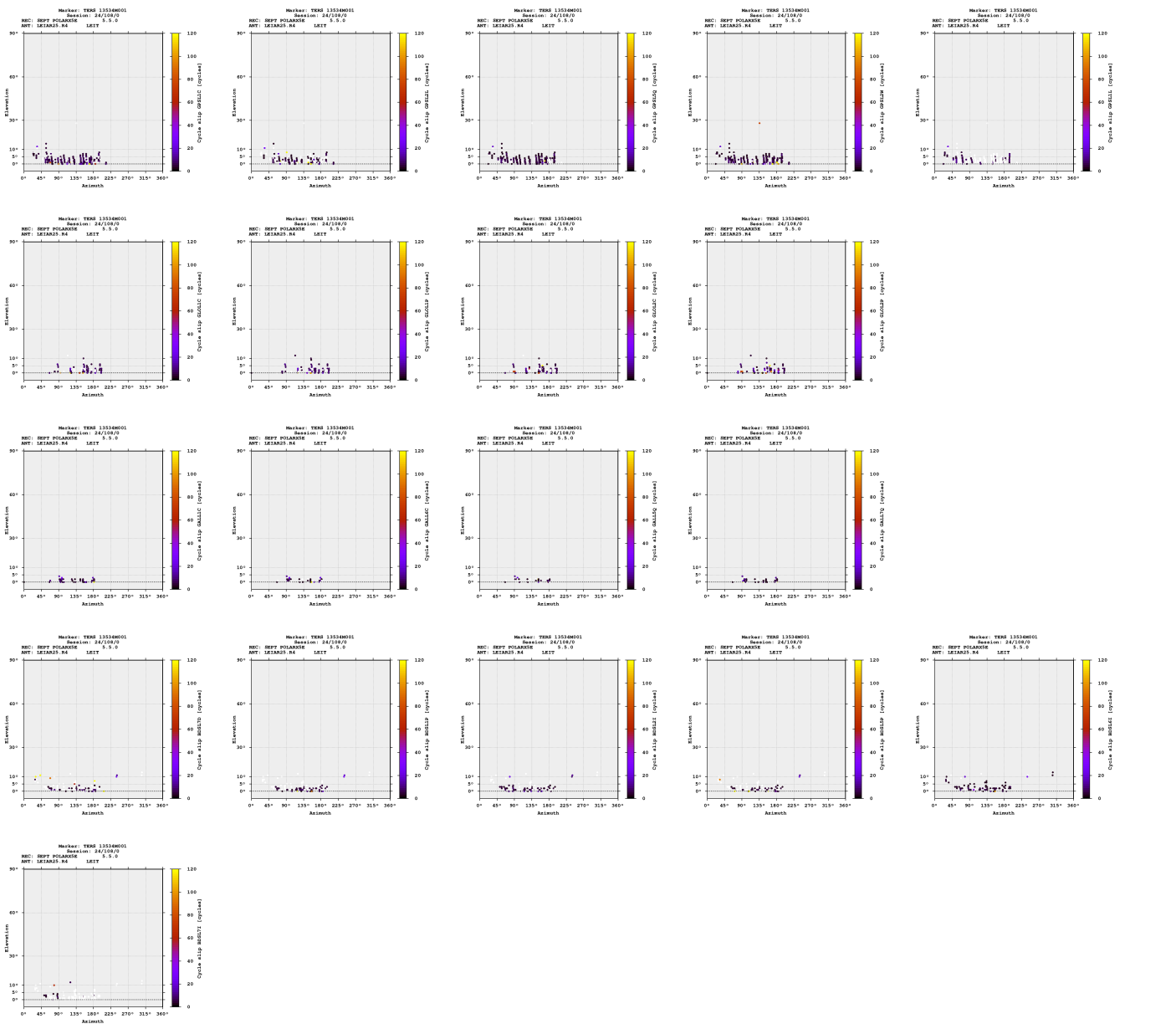


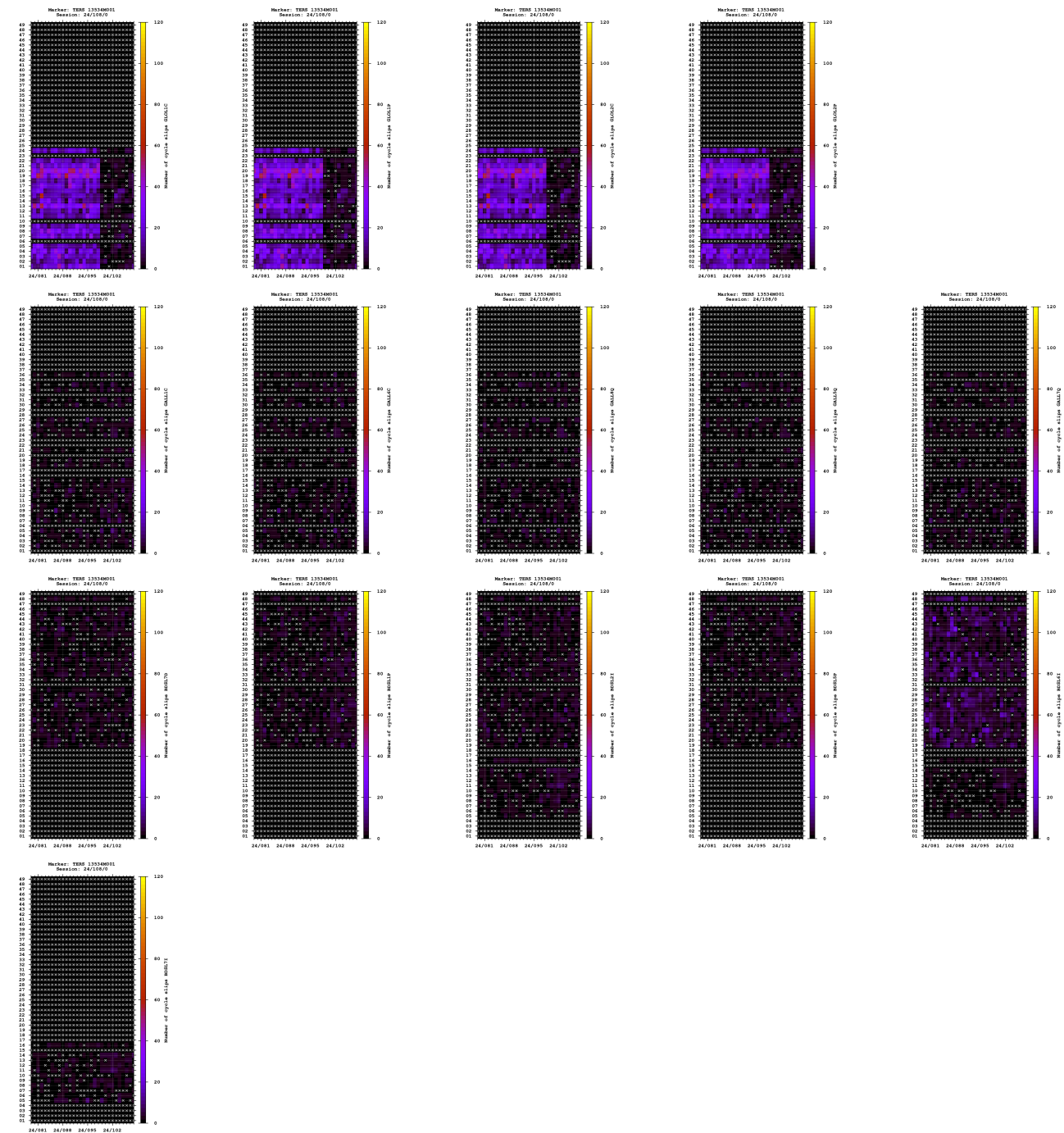


Observations

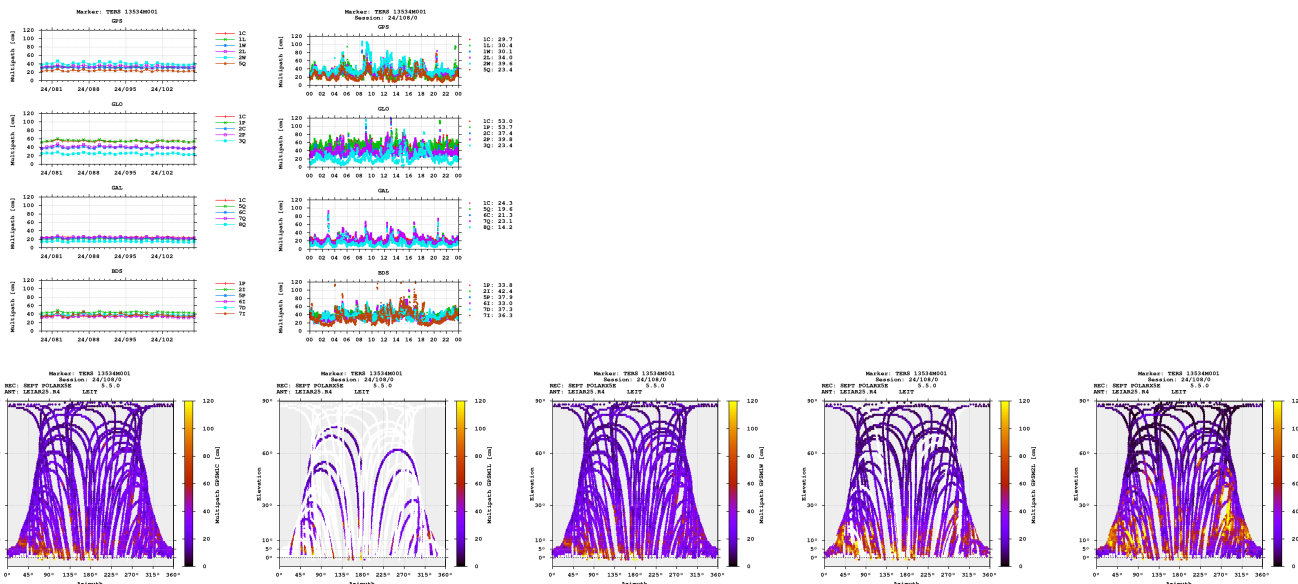


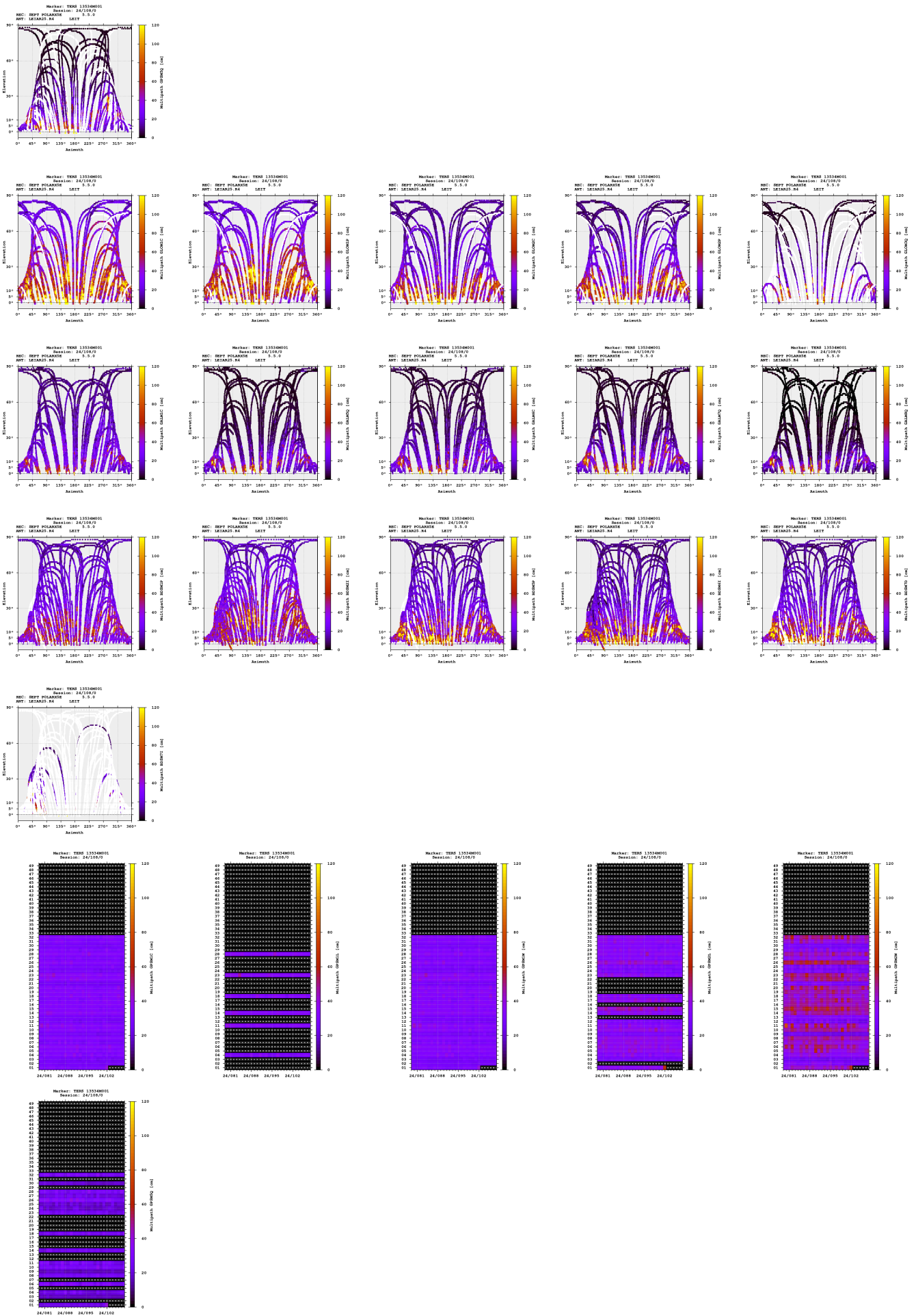
Cycle slips

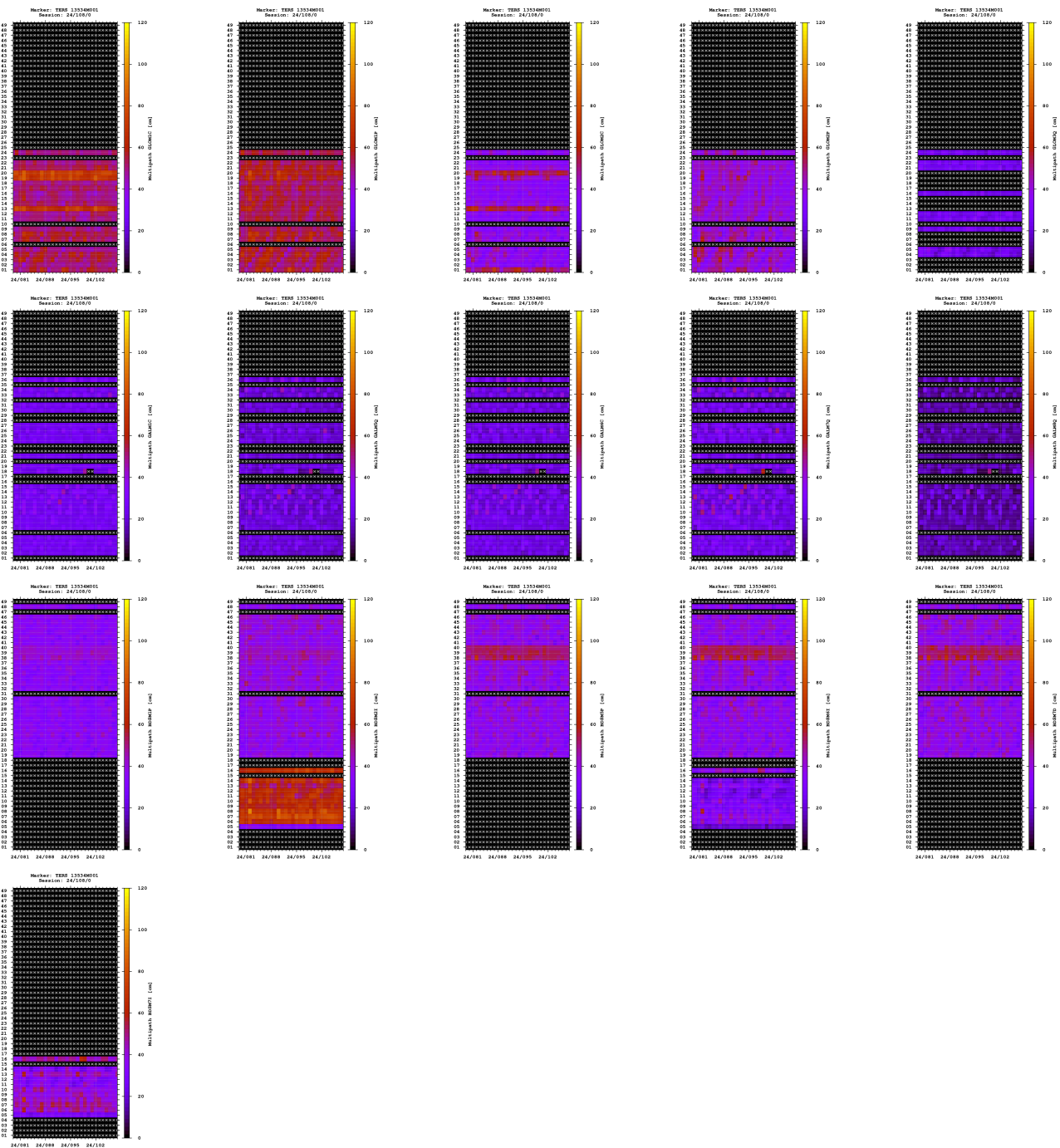




Multipath

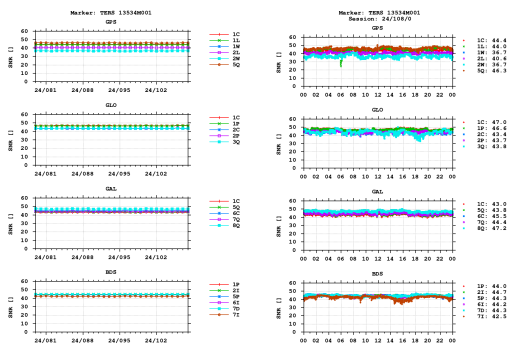


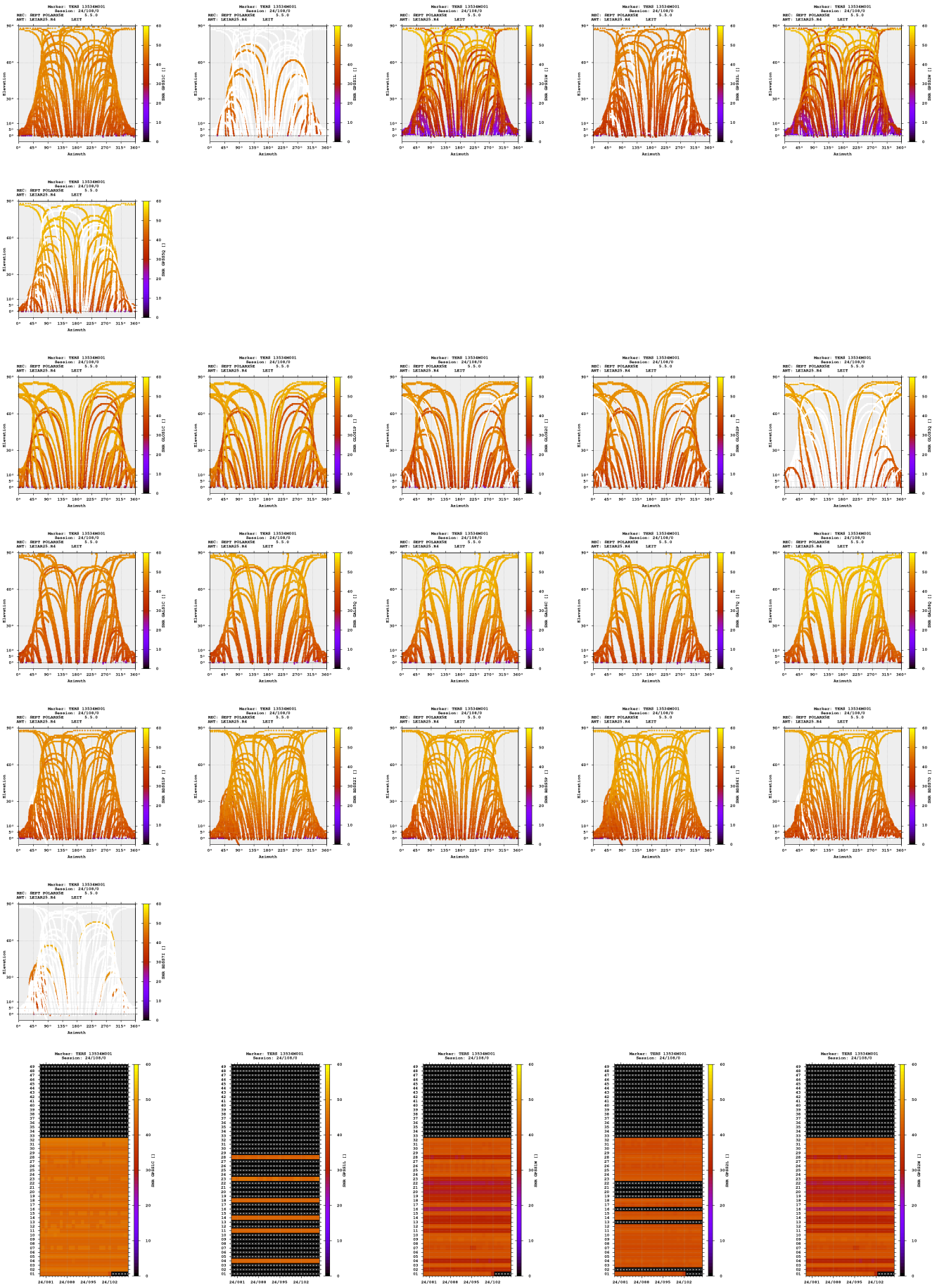


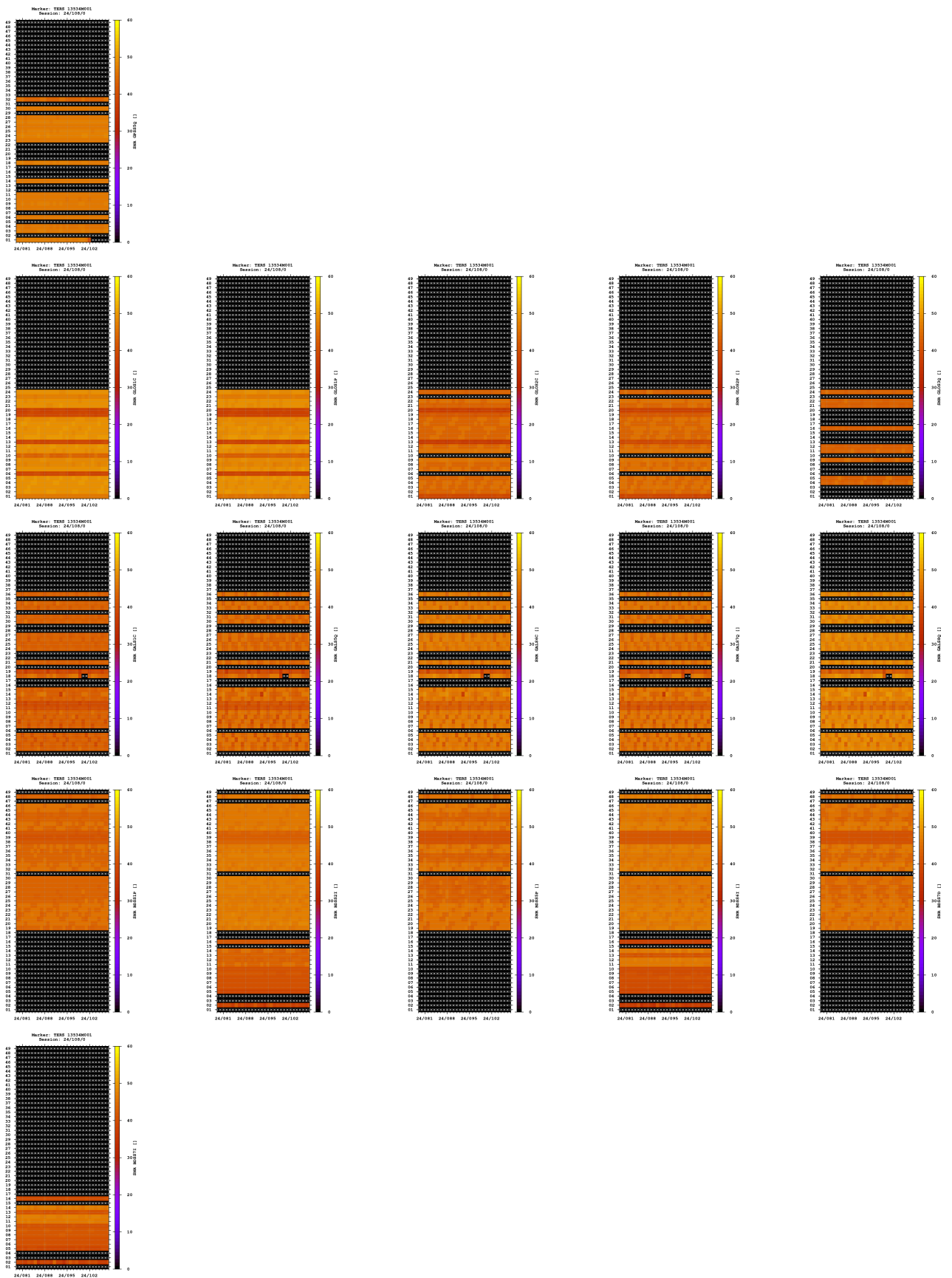


- The multipath is estimated as a standard deviation over a sequence of consecutive epochs.

Signal-to-noise ratio

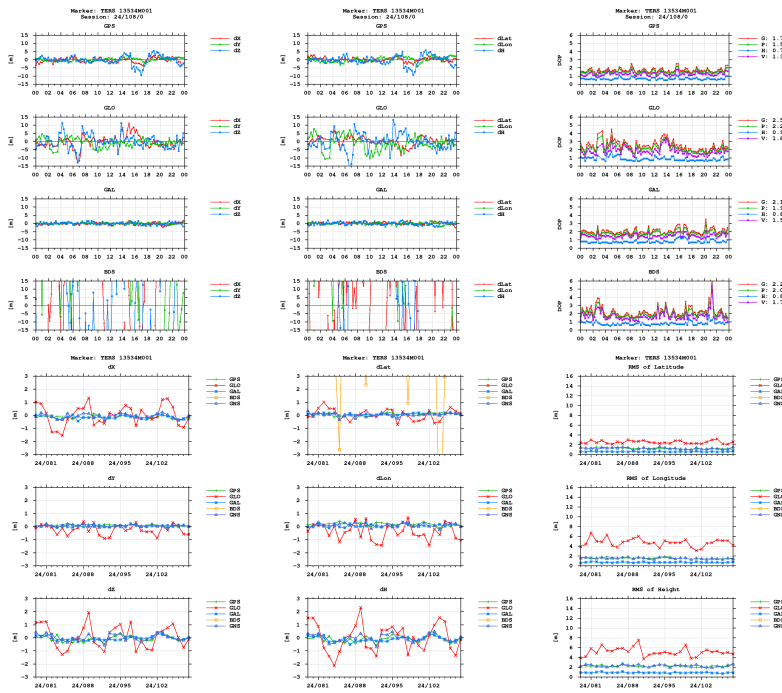






Estimates

2024-04-17 00:00:00	GPS	3798580.4276	346994.3985	5094781.3748	53.362741632	5.219394464	56.3047
2024-04-17 00:00:00	GLO	3798580.4783	346993.7795	5094781.3330	53.362741279	5.219384359	56.4528
2024-04-17 00:00:00	GAL	3798580.6027	346994.3869	5094781.4870	53.362740983	5.219394052	56.4981
2024-04-17 00:00:00	BDS	3798543.0806	347050.0679	5094767.2526	53.362897545	5.220278238	25.8013



Equipment

2024-03-19 00:00:00 SEPT POLARX5E 5.5.0 3048026 SEPT POLAR

Program info

G-Nut/Anubis Free [3.8] Mar 3 2024 20:32:19 (Rev: 4233)