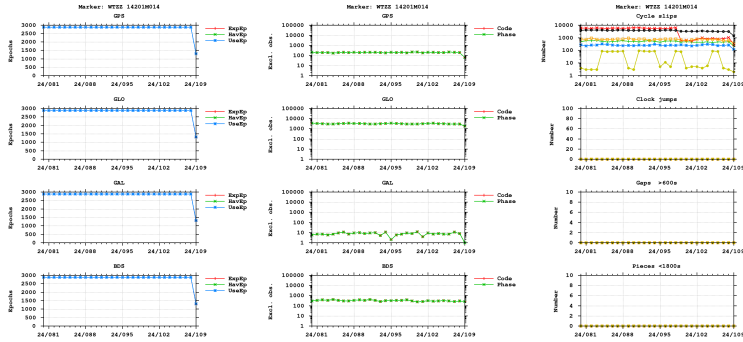


GNSS observation file monitoring for WTZZ

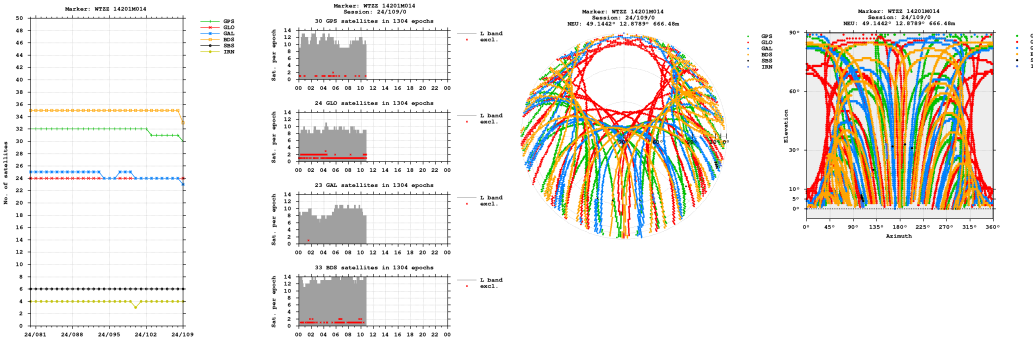
Last RINEX file: WTZZ1090.24D.Z
 RINEX version: 3.04
 Marker: WTZZ 14201M014
 Receiver: 1ZAHJWR2 JAVAD TRE_3 DELTA 4.1.03-210713
 Antenna: 10240011 LEIAR25.R3 LEIT

Epochs

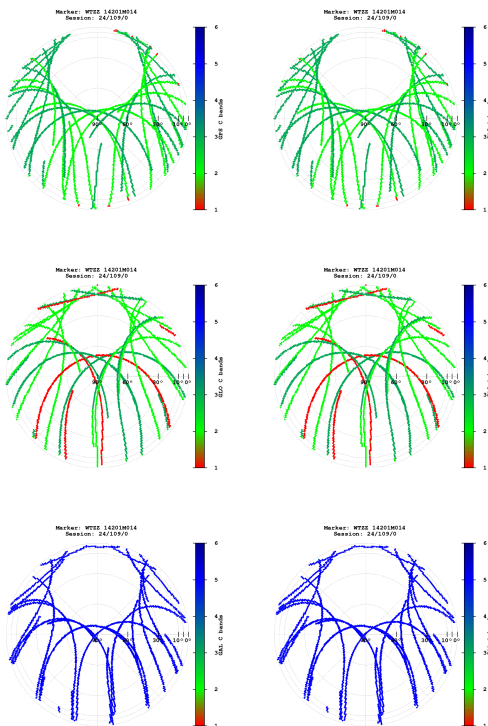


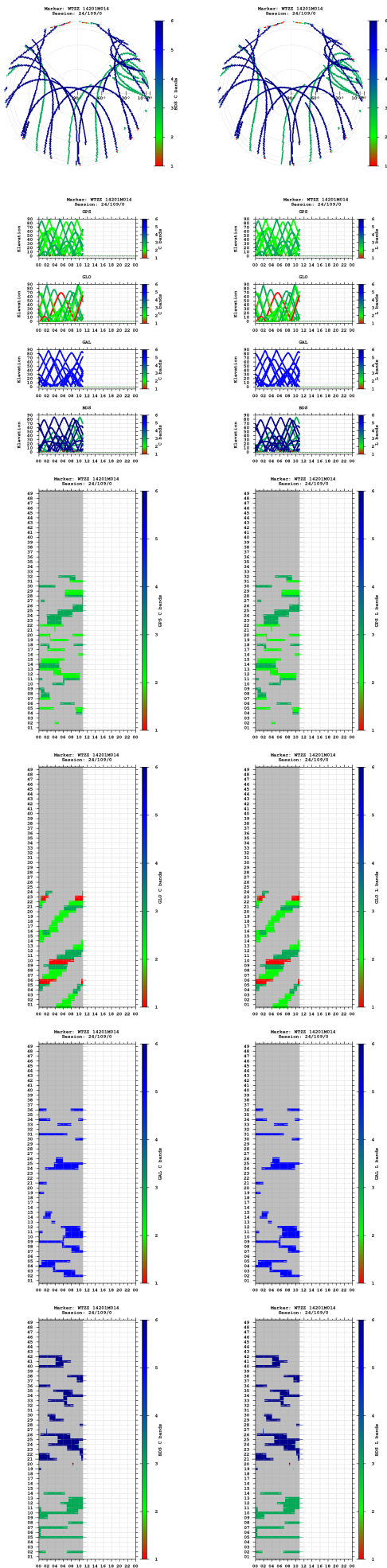
- "UseEp": The usable epoch is introduced if four or more satellites are observed with the minimum of two frequencies.
- Cycle slip detection algorithm is based on Melbourne-Wübbena and geometry-free LC.

Satellites

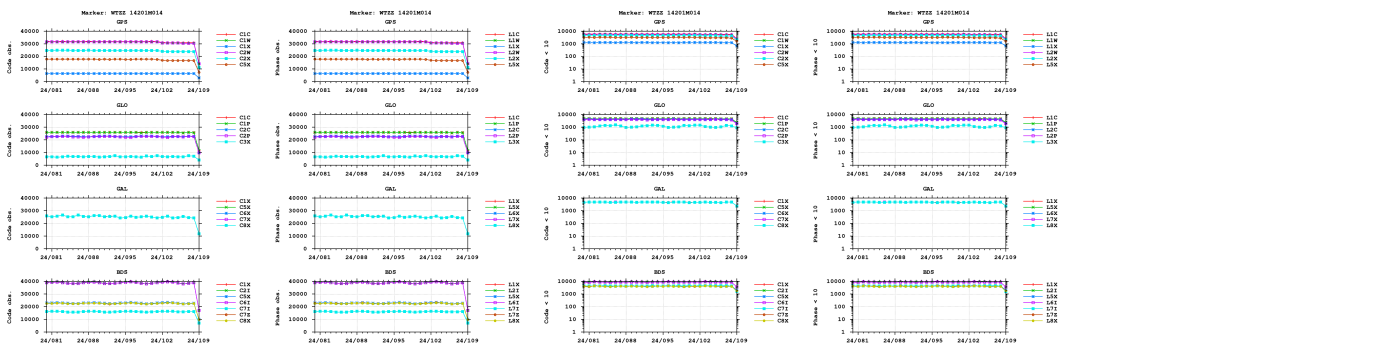


Bands

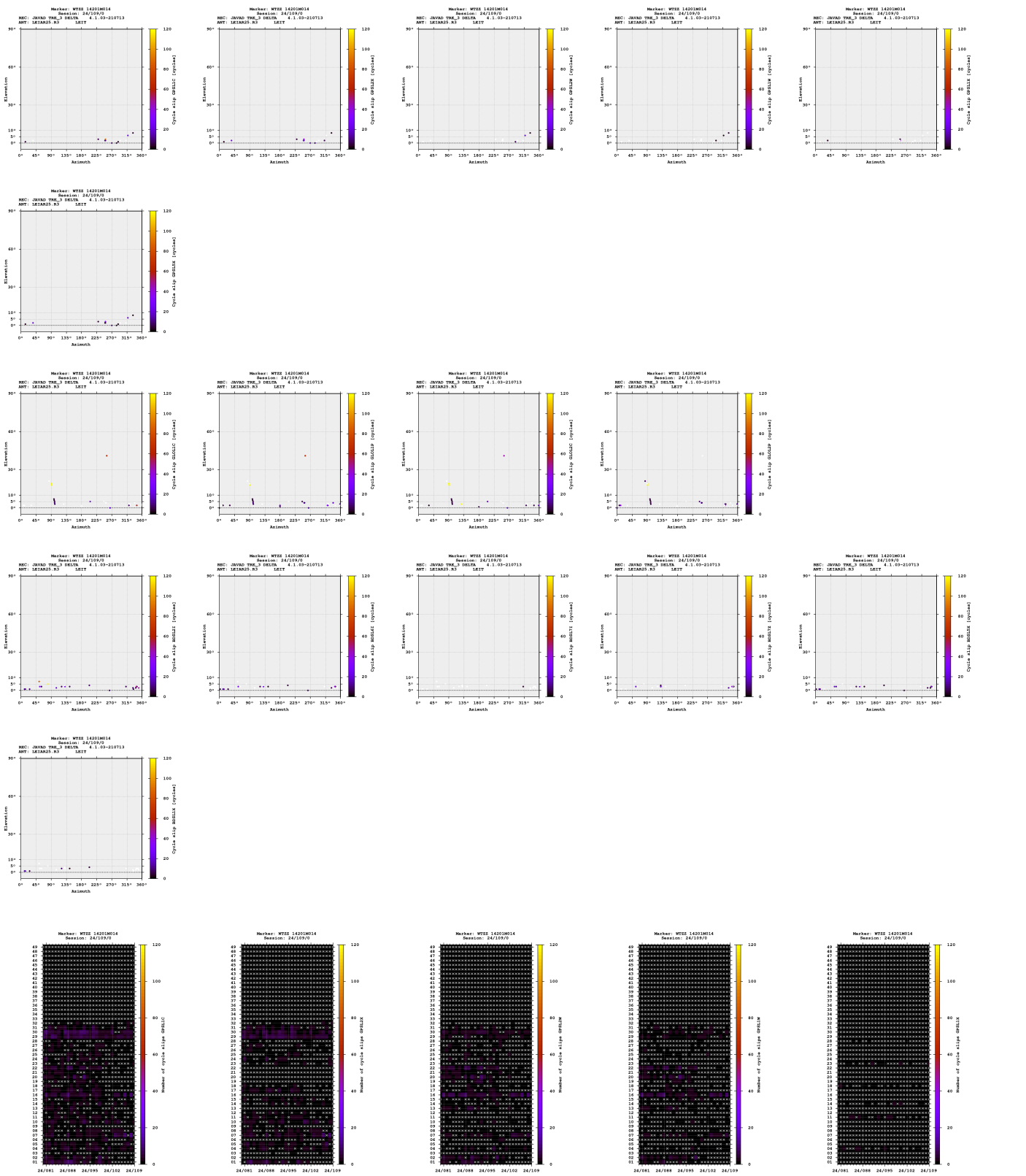


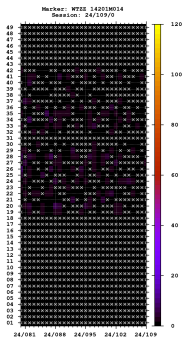
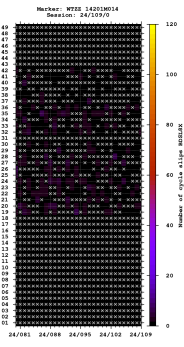
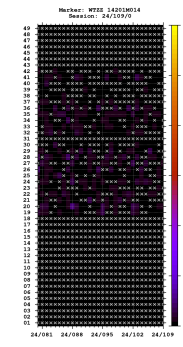
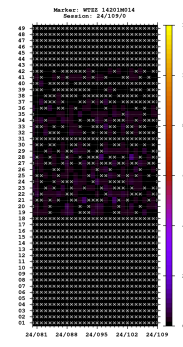
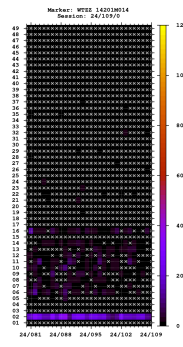
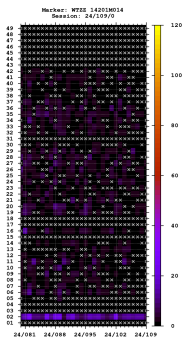
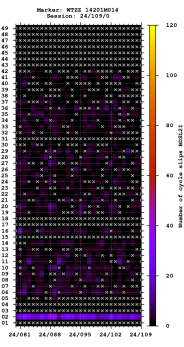
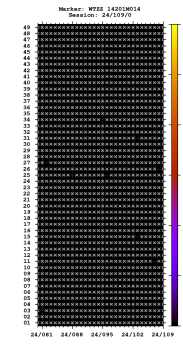
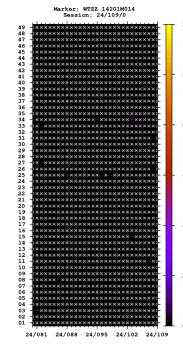
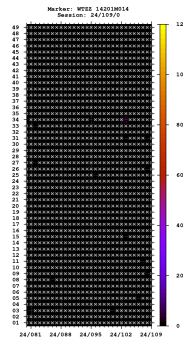
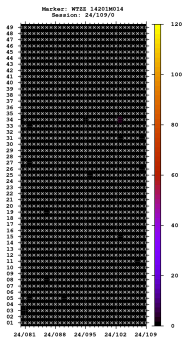
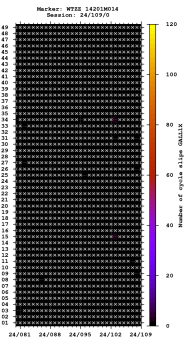
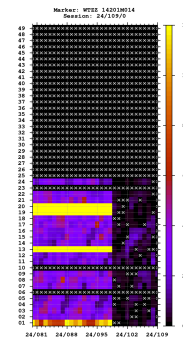
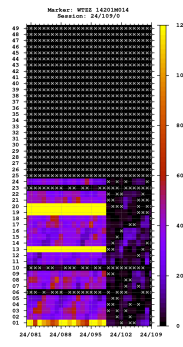
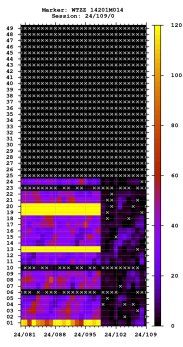
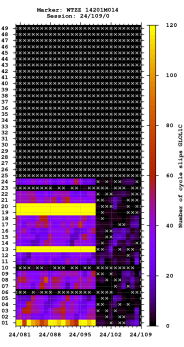
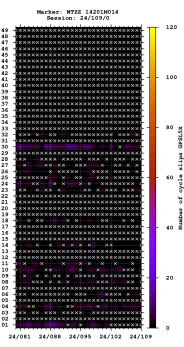


Observations

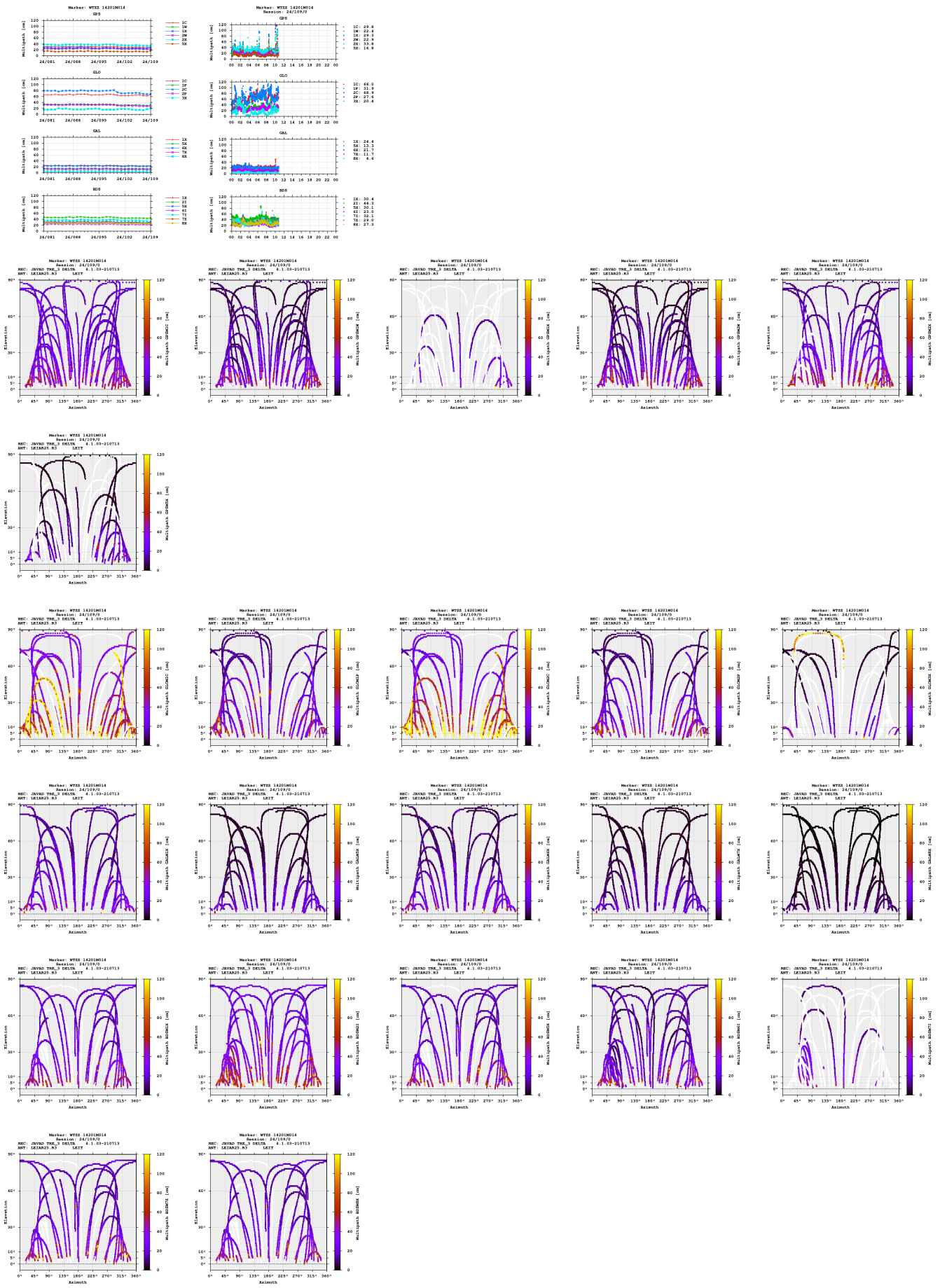


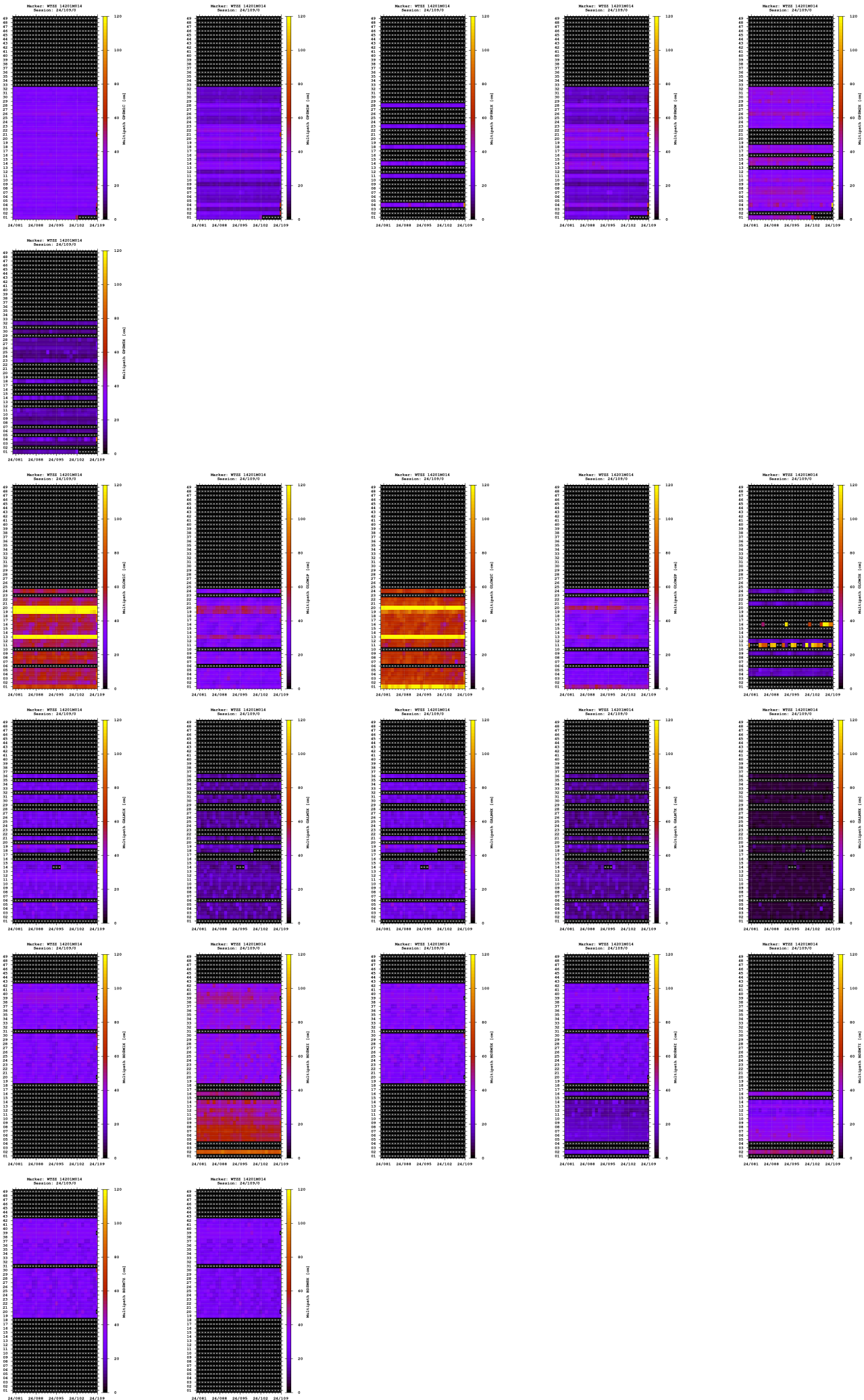
Cycle slips





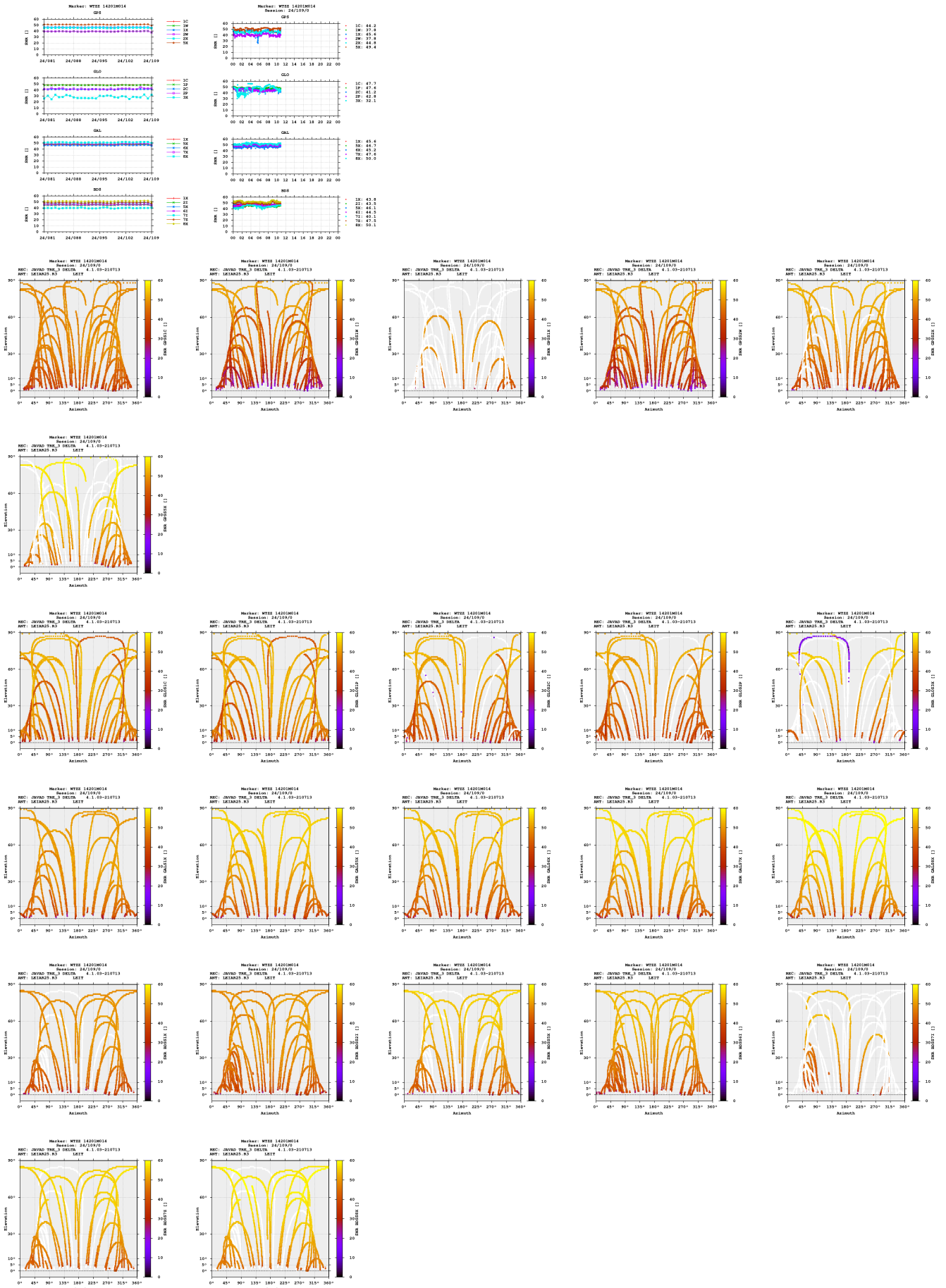
Multipath

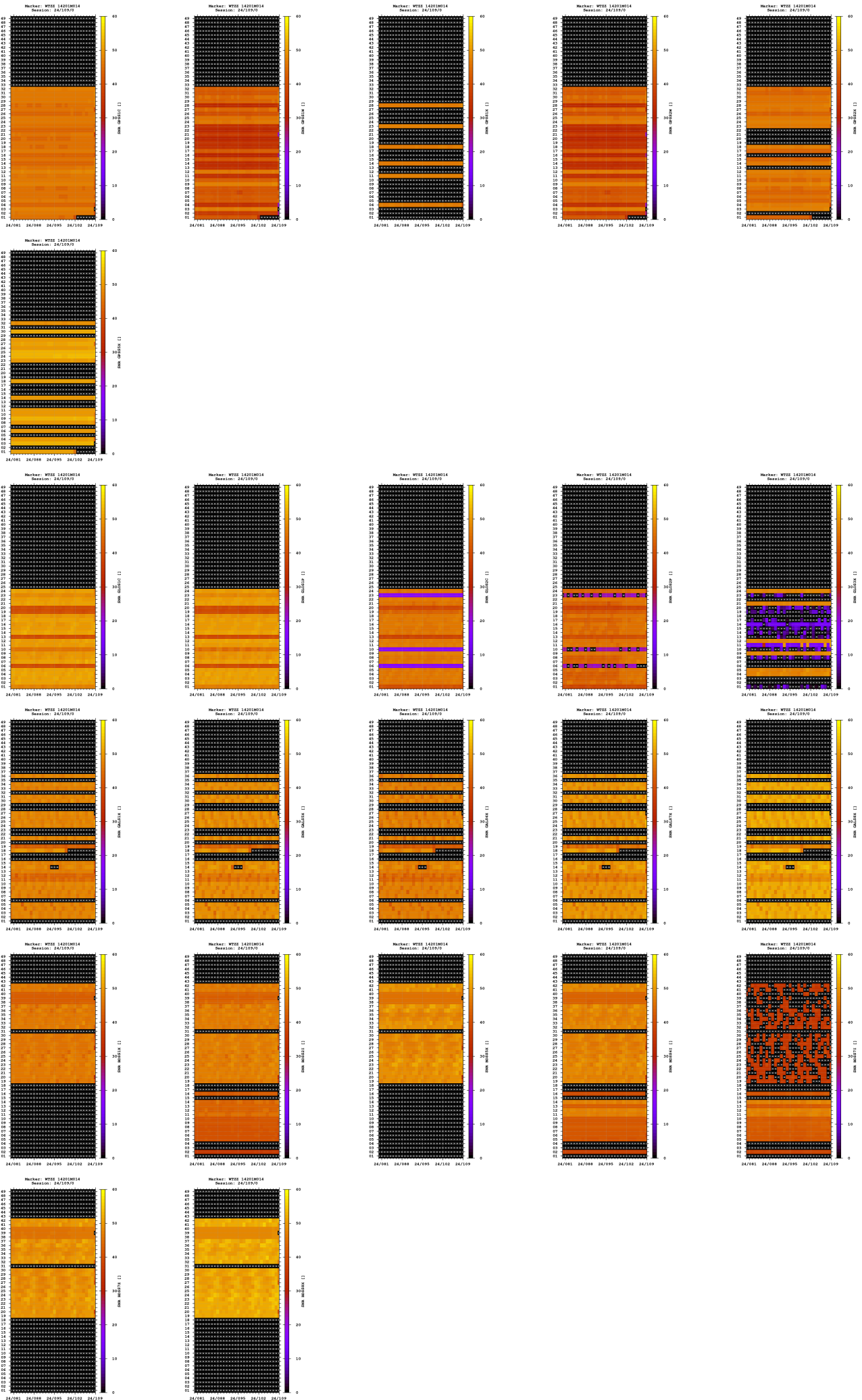




- The multipath is estimated as a standard deviation over a sequence of consecutive epochs.

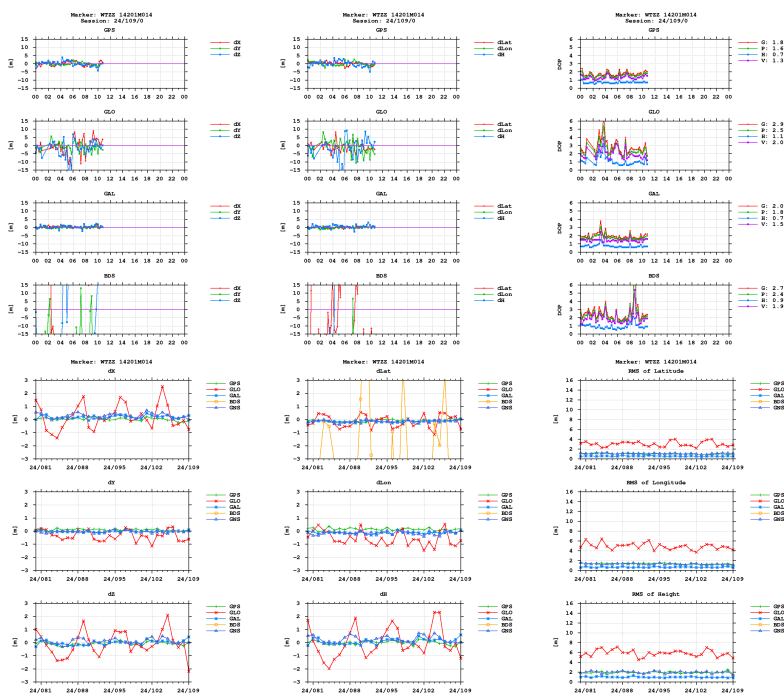
Signal-to-noise ratio





Estimates

2024-04-18 00:00:00	GPS	4075579.2612	931853.5963	4801569.8536	49.144217628	12.878911516	666.5874
2024-04-18 00:00:00	GLO	4075578.6251	931852.9128	4801567.5862	49.144209847	12.878903298	665.2810
2024-04-18 00:00:00	GAL	4075579.6760	931853.6412	4801570.2100	49.144216796	12.878910429	667.0845
2024-04-18 00:00:00	BDS	4075640.0071	931800.8559	4801589.1761	49.144008312	12.878020867	712.1372



Equipment

2024-03-20 00:00:00 JAVAD TRE_3 DELTA 4.1.03-210713 1ZAHJWR2 JAVAD TRE_

Program info

G-Nut/Anubis Free [3.8] Mar 3 2024 20:32:19 (Rev: 4233)