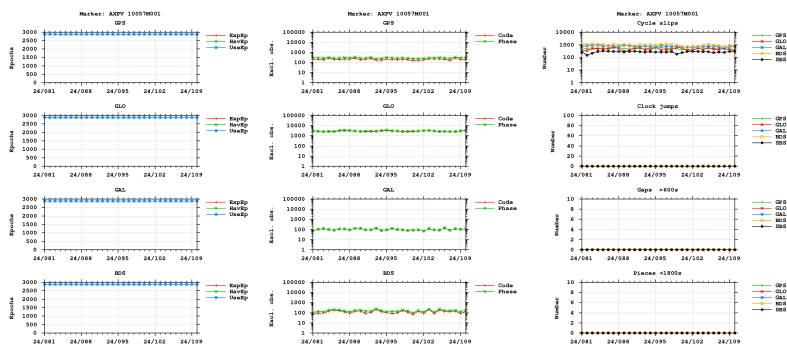


# GNSS observation file monitoring for AXPV

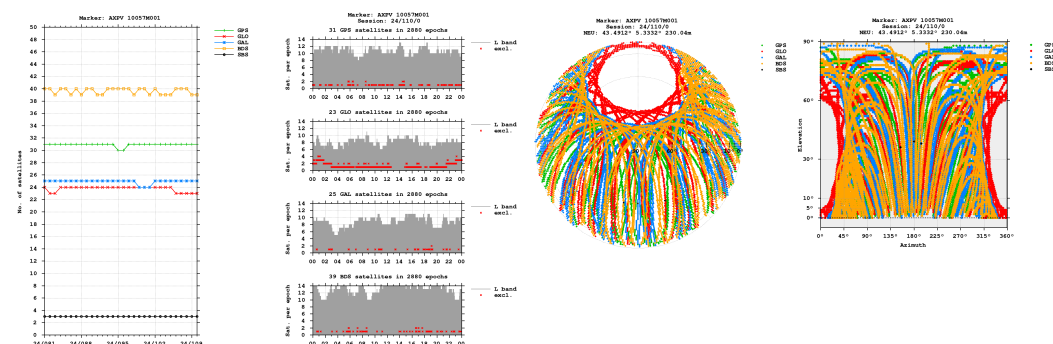
Last RINEX file: AXPV1100.24D.Z  
 RINEX version: 3.04  
 Marker: AXPV 10057M001  
 Receiver: 2090133 LEICA GR50 4.60  
 Antenna: 1441107437 TRM57971.00 NONE

## Epochs

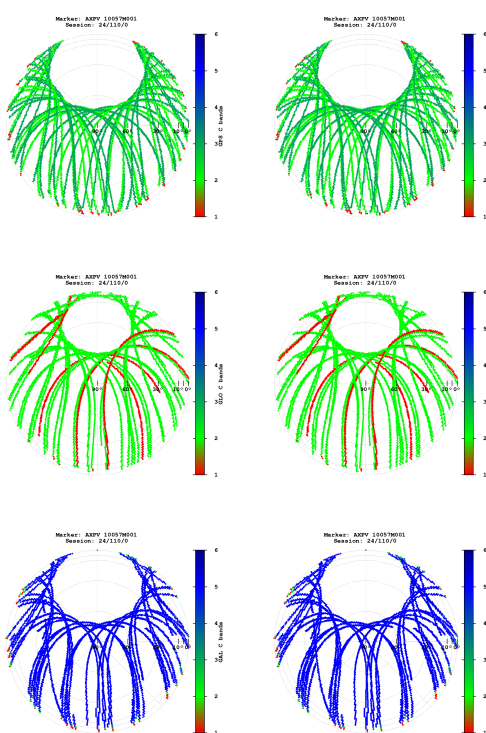


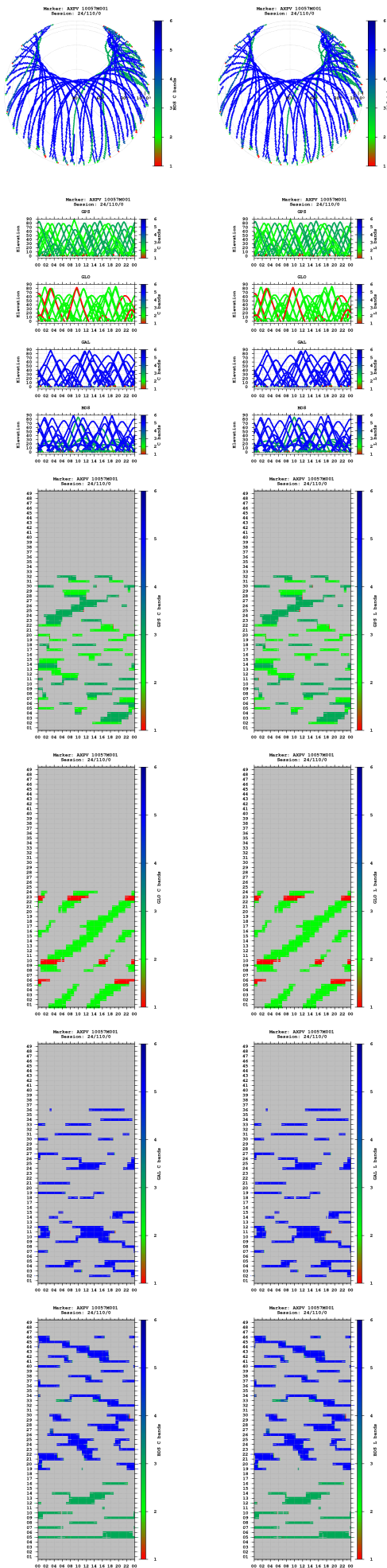
- "UseEp": The usable epoch is introduced if four or more satellites are observed with the minimum of two frequencies.
- Cycle slip detection algorithm is based on Melbourne-Wübbena and geometry-free LC.

## Satellites

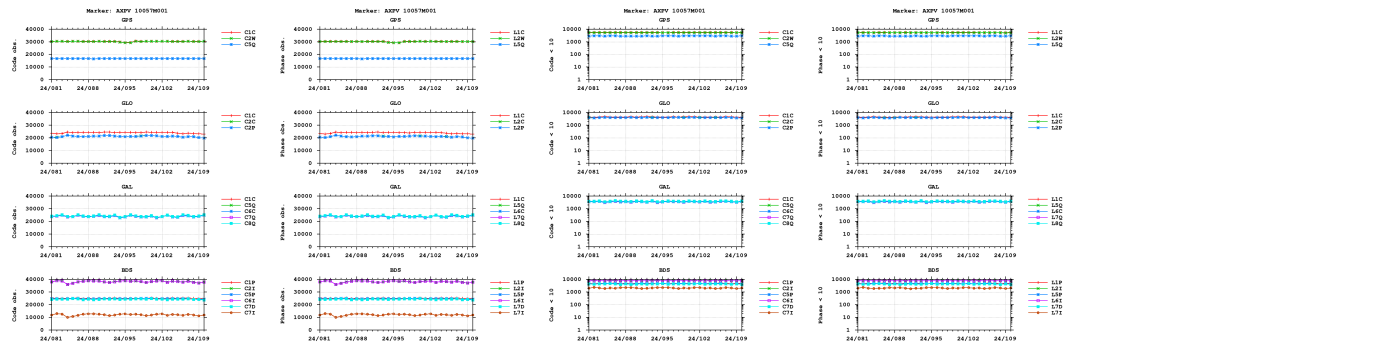


## Bands

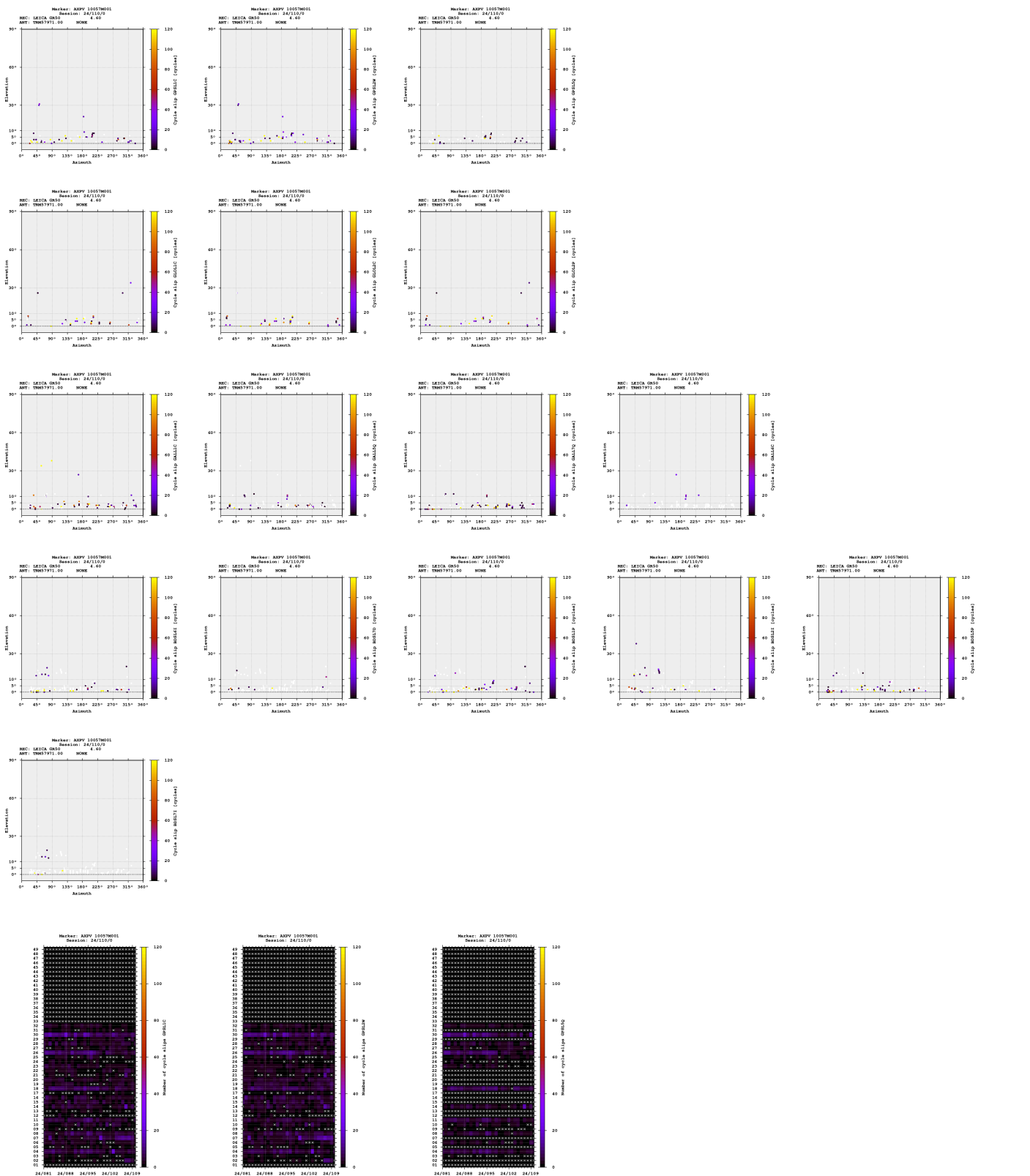


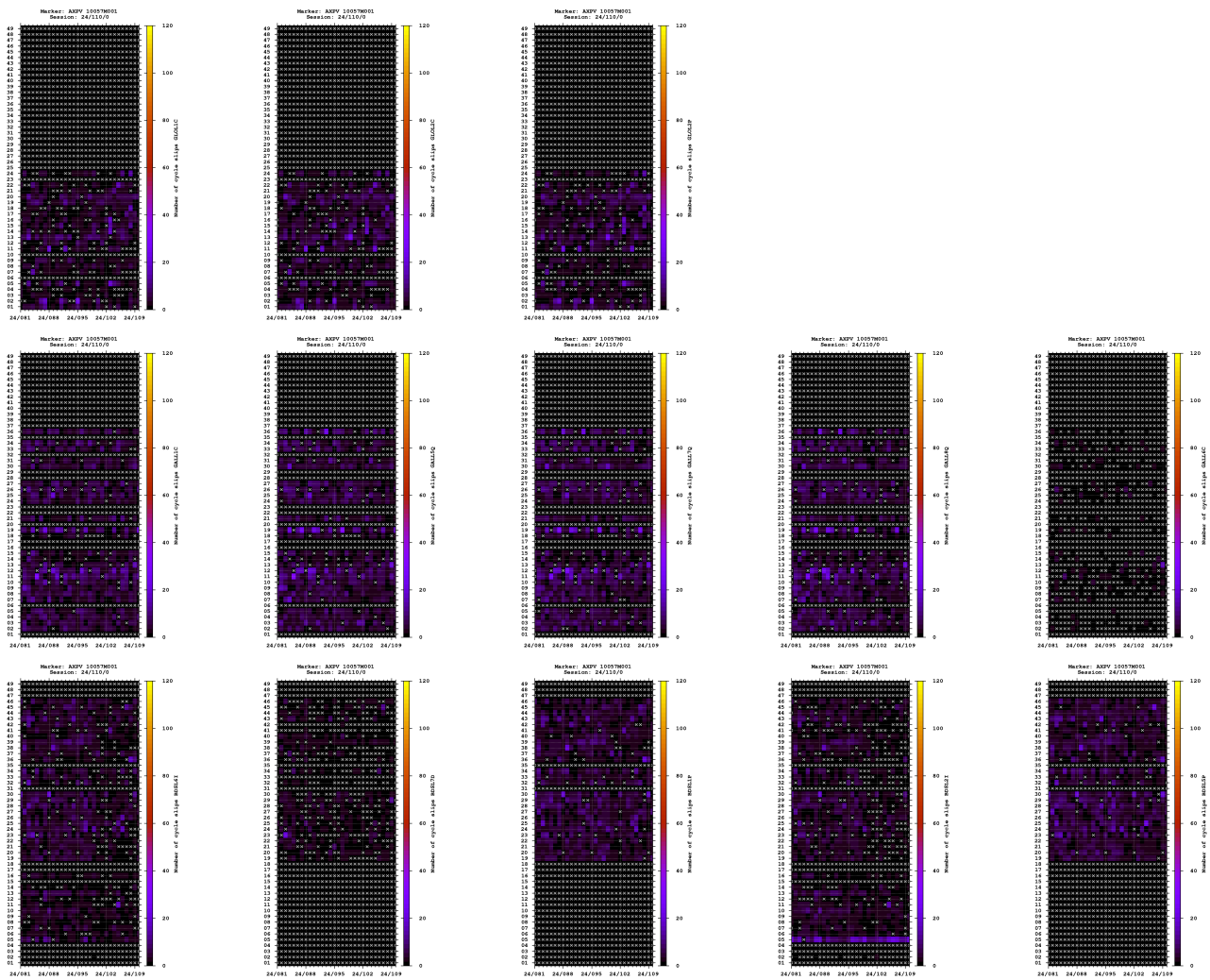


Observations

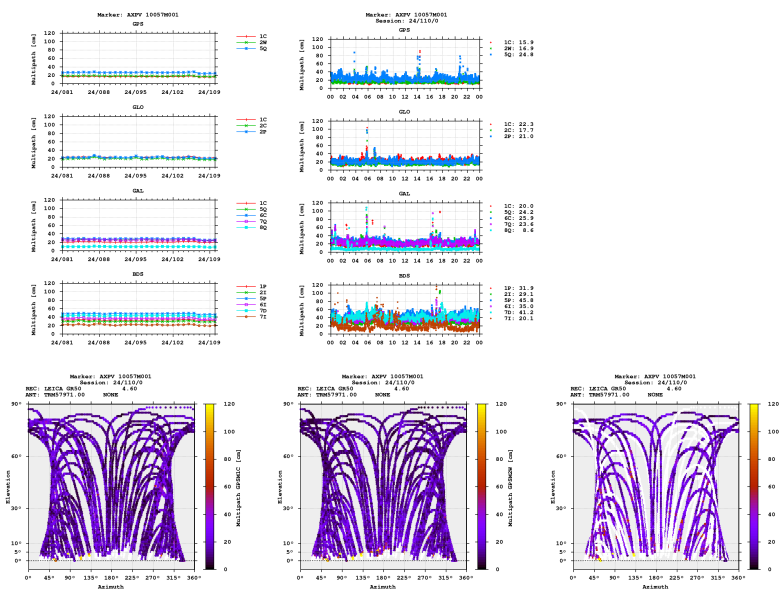


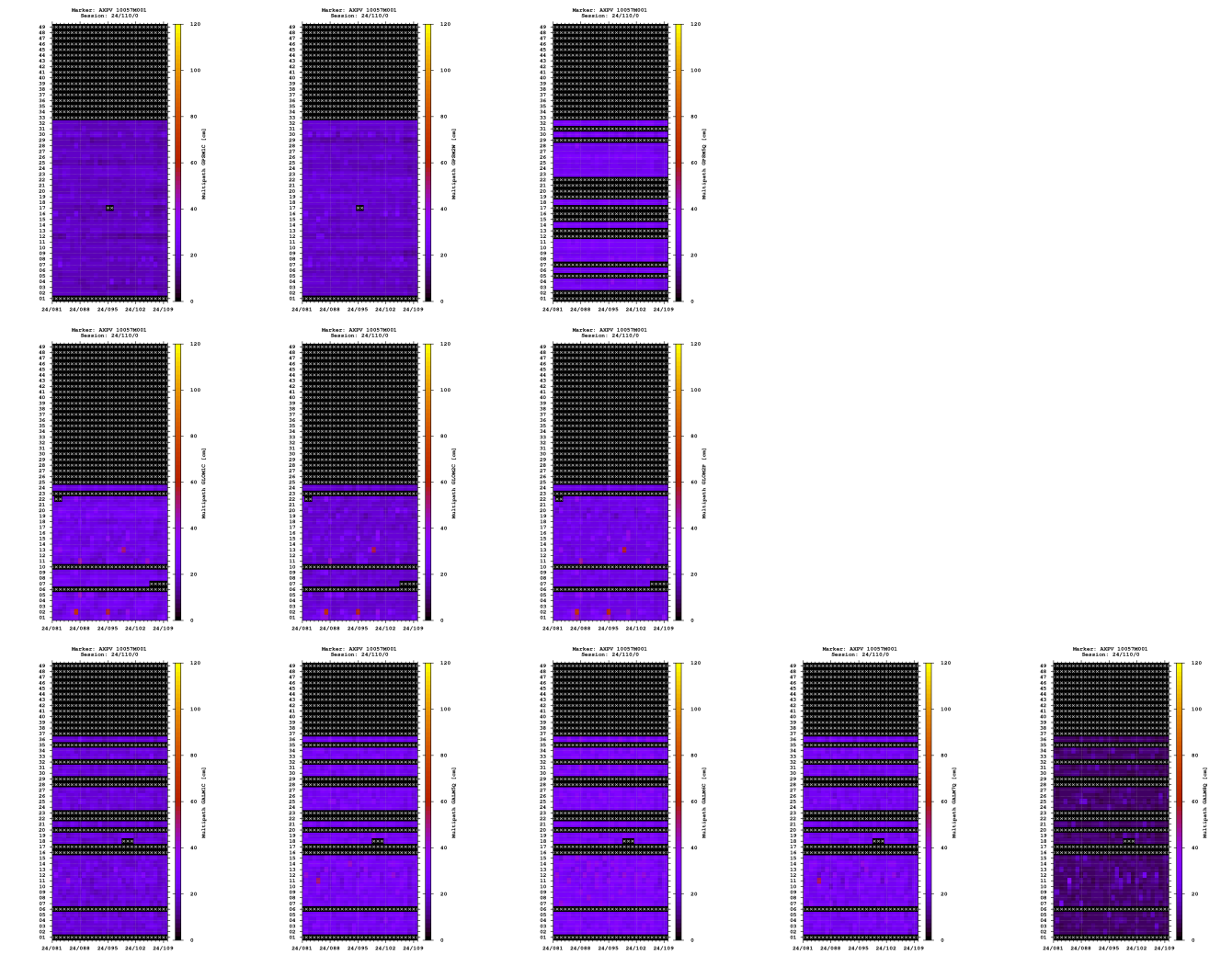
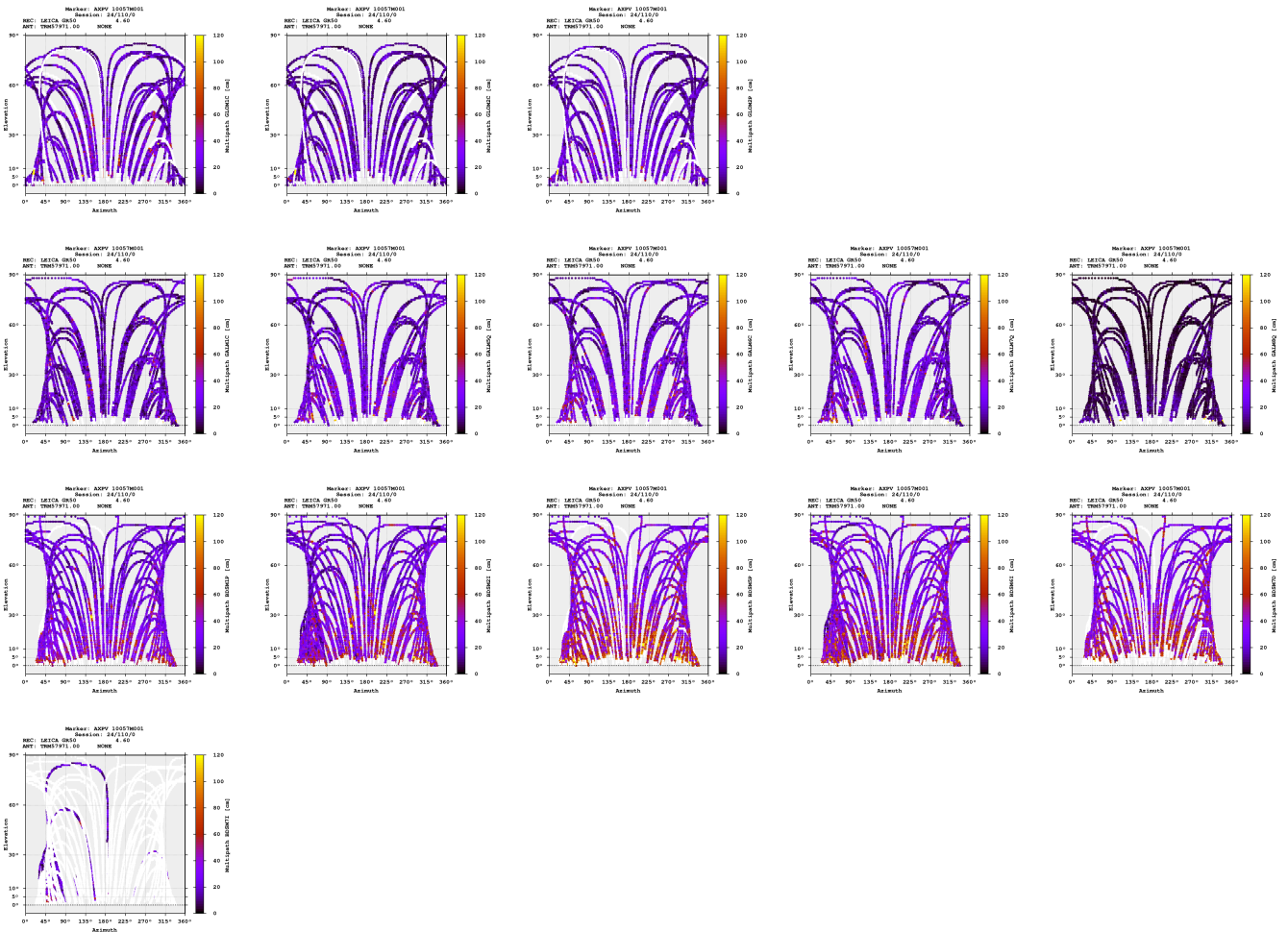
### Cycle slips



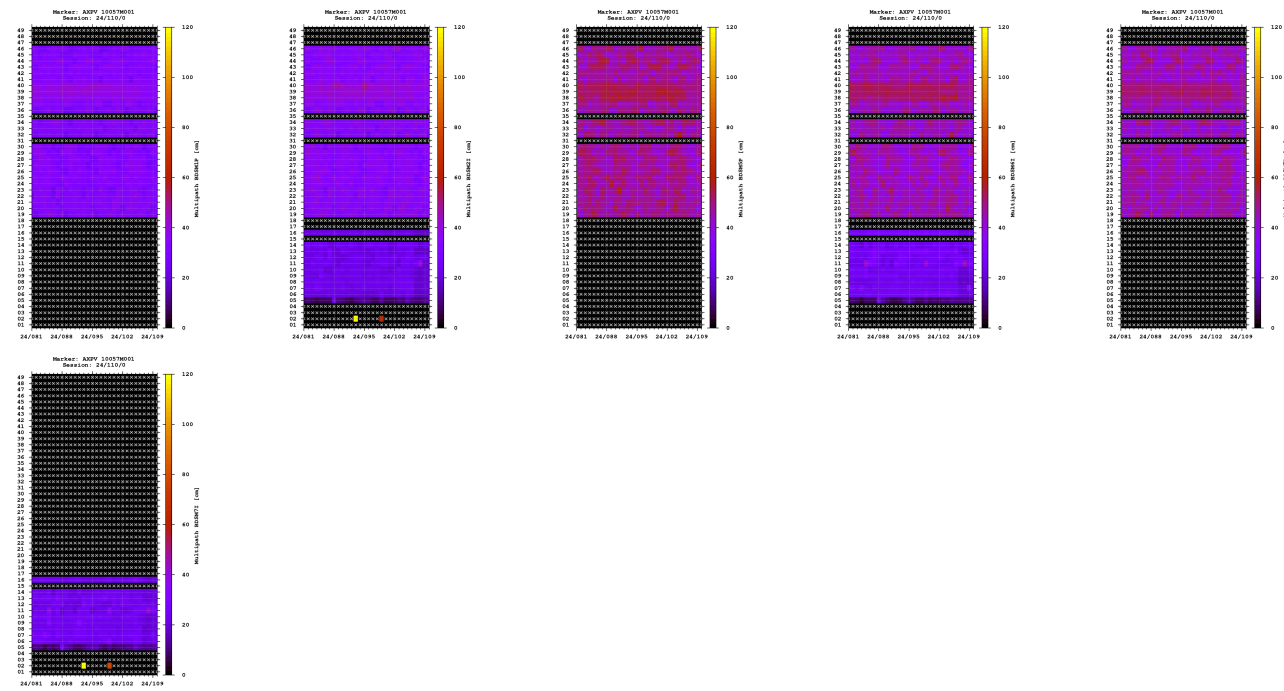


### Multipath



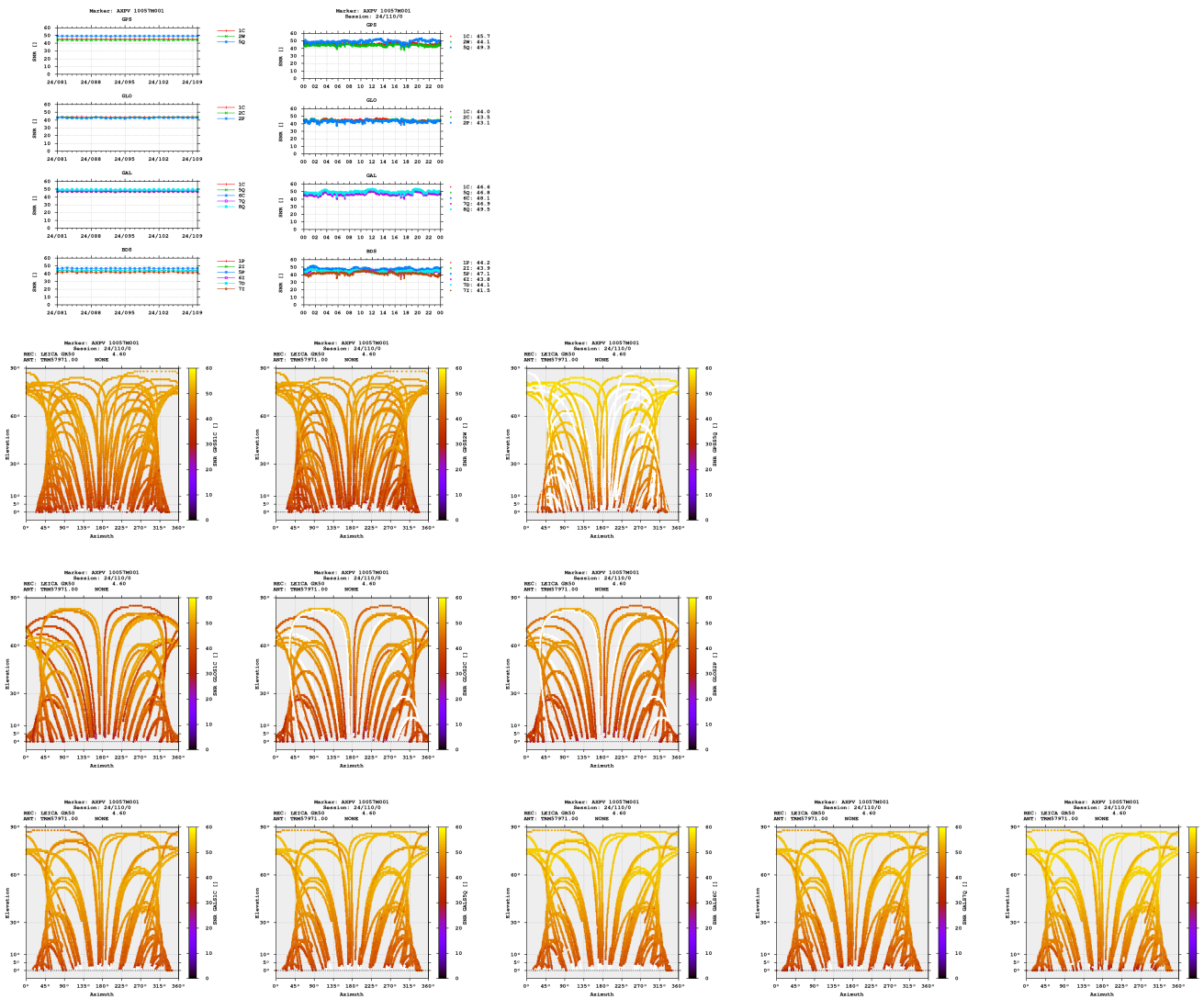


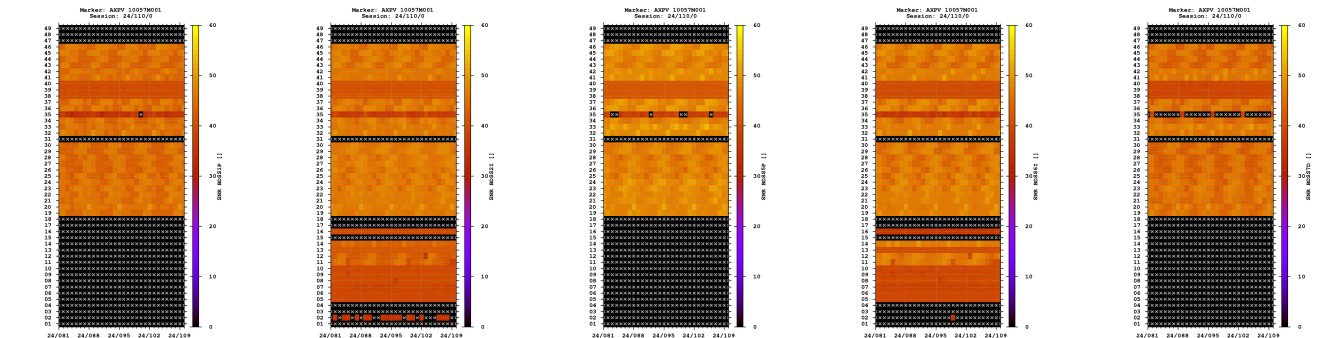
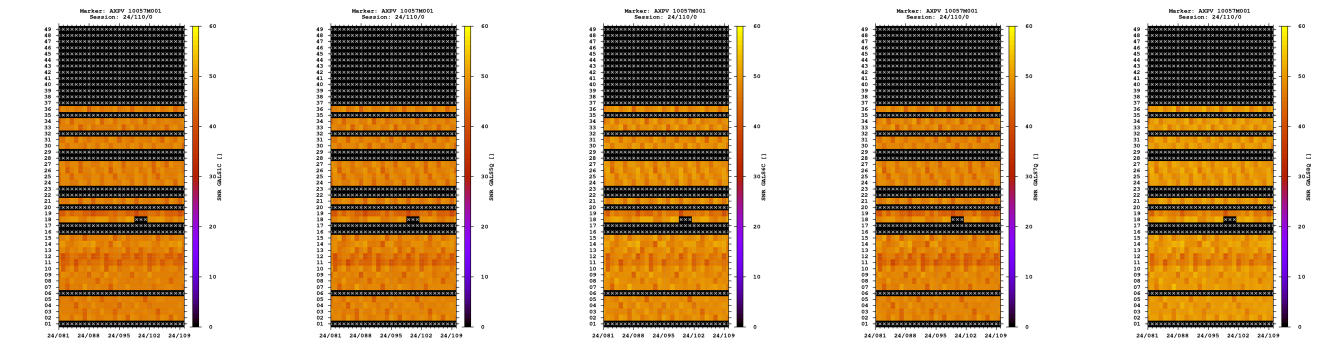
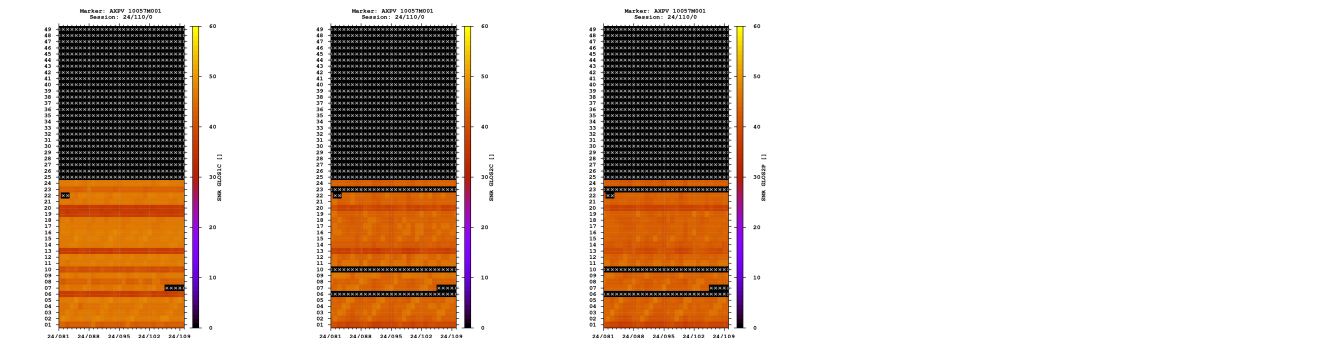
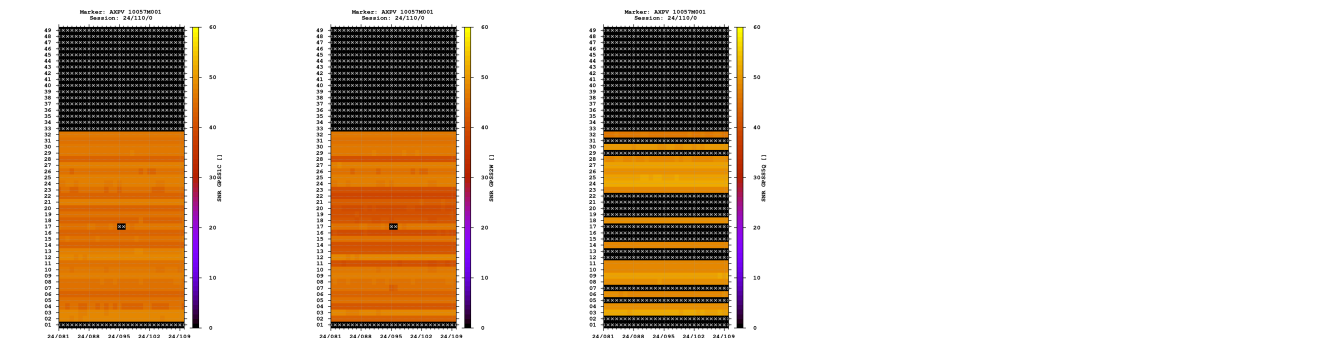
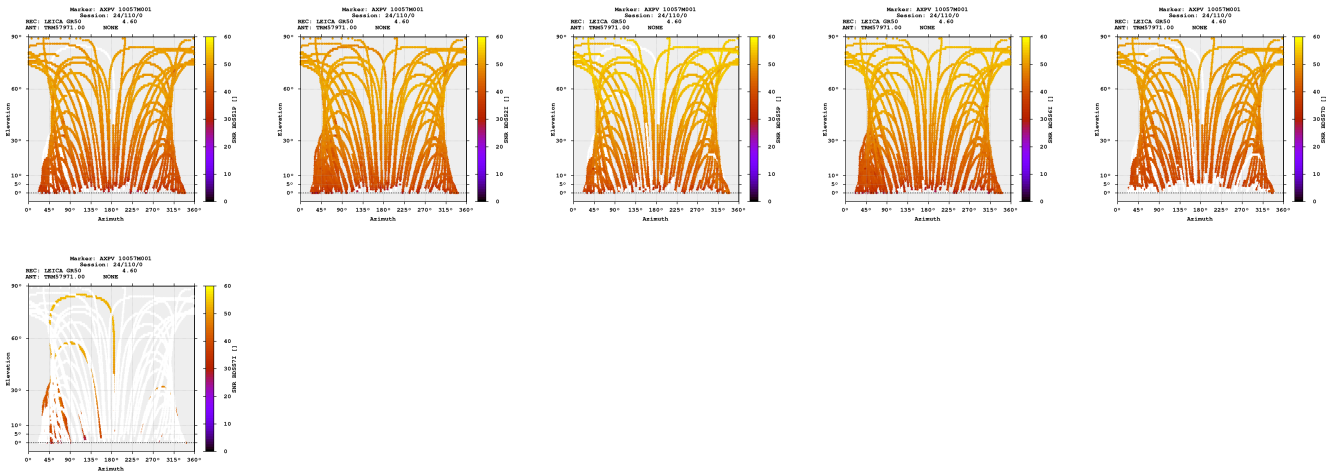


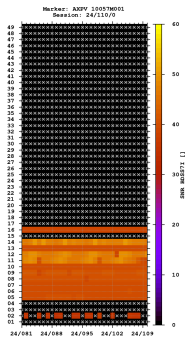


- The multipath is estimated as a standard deviation over a sequence of consecutive epochs.

### Signal-to-noise ratio

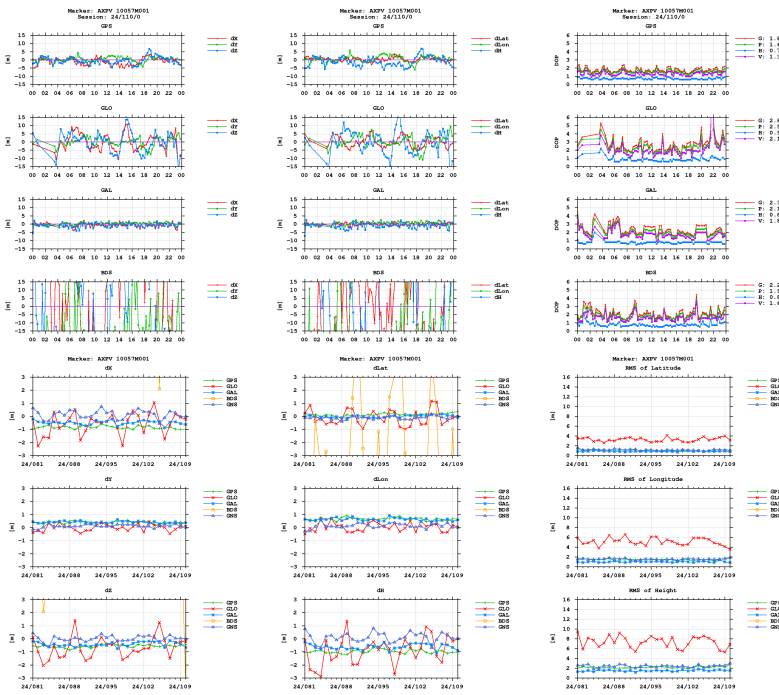






**Estimates**

2024-04-19 00:00:00	GPS	4614666.2047	430786.6643	4367411.7536	43.491219999	5.333198790	229.0288
2024-04-19 00:00:00	GLO	4614666.9969	430786.3927	4367411.9929	43.491217016	5.333193442	230.0495
2024-04-19 00:00:00	GAL	4614666.5901	430786.6766	4367411.5329	43.491216174	5.333198499	229.1561
2024-04-19 00:00:00	BDS	4614679.6145	430762.0605	4367408.5934	43.491130801	5.332885418	237.1200



**Equipment**

2024-03-21 00:00:00 LEICA GR50 4.60 2090133 LEICA GR50

**Program info**

G-Nut/Anubis Free [3.8] Mar 3 2024 20:32:19 (Rev: 4233)