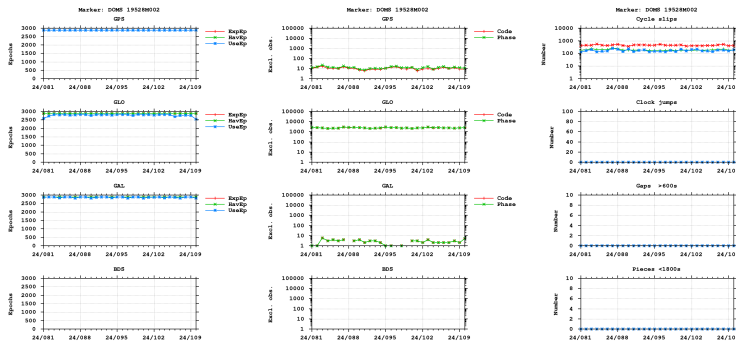


# GNSS observation file monitoring for DOMS

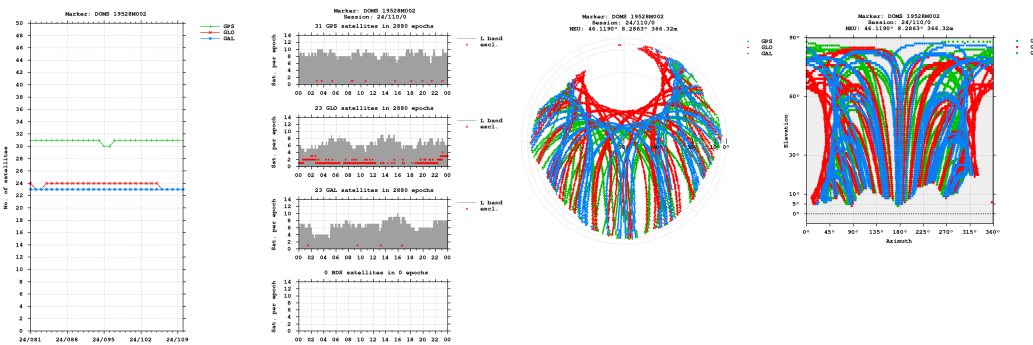
Last RINEX file: DOMS1100.24D.Z  
 RINEX version: 3.04  
 Marker: DOMS 19528M002  
 Receiver: 496065 LEICA GRX1200+GNSS 9.20/6.407  
 Antenna: 10180009 LEIAR25.R3 LEIT

## Epochs

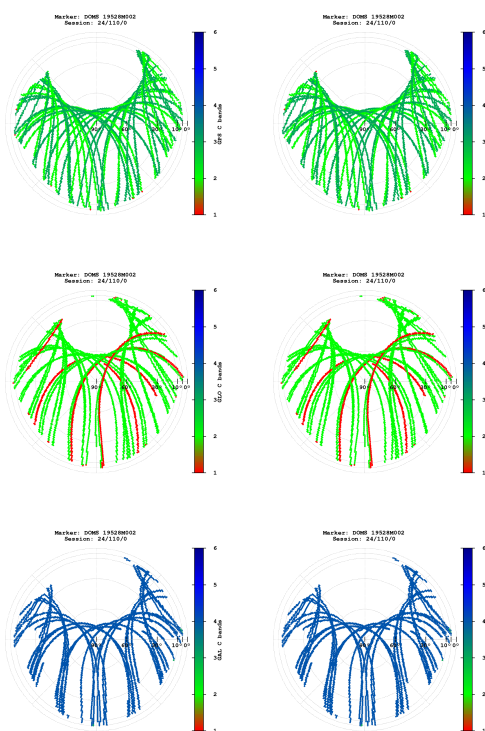


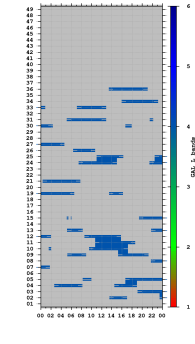
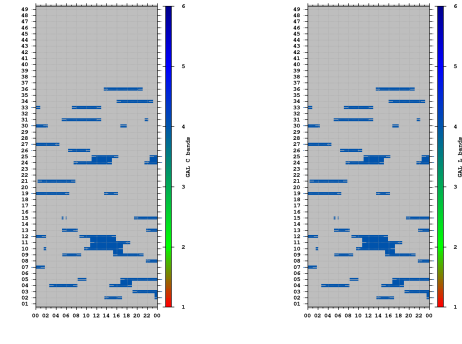
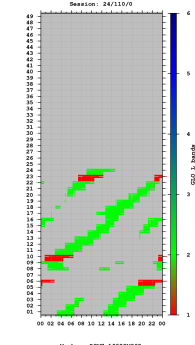
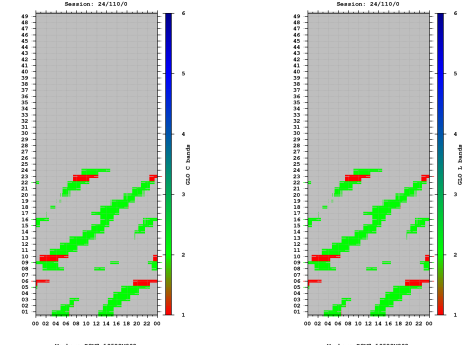
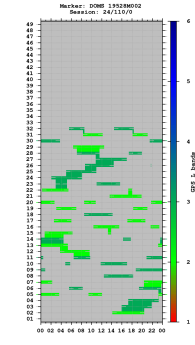
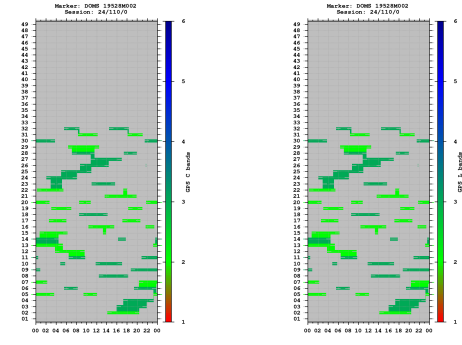
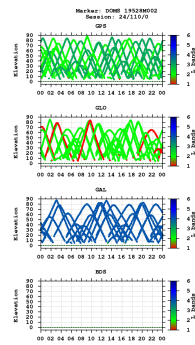
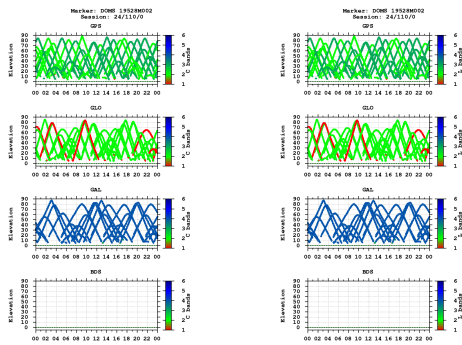
- "UseEp": The usable epoch is introduced if four or more satellites are observed with the minimum of two frequencies.
- Cycle slip detection algorithm is based on Melbourne-Wübbena and geometry-free LC.

## Satellites

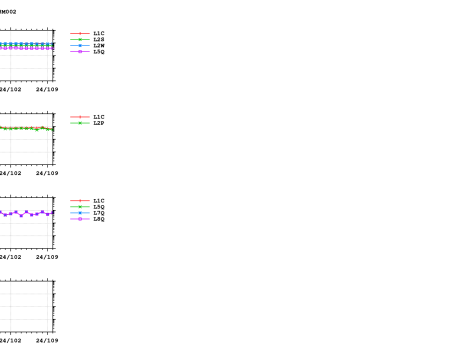
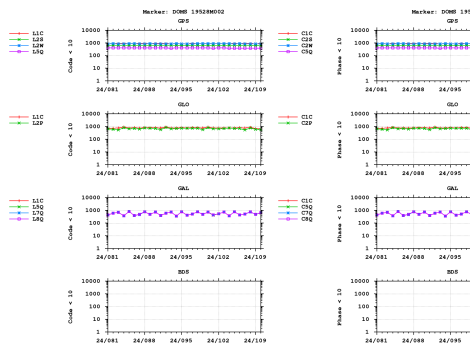
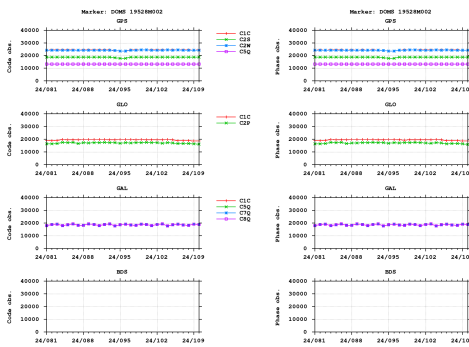


## Bands

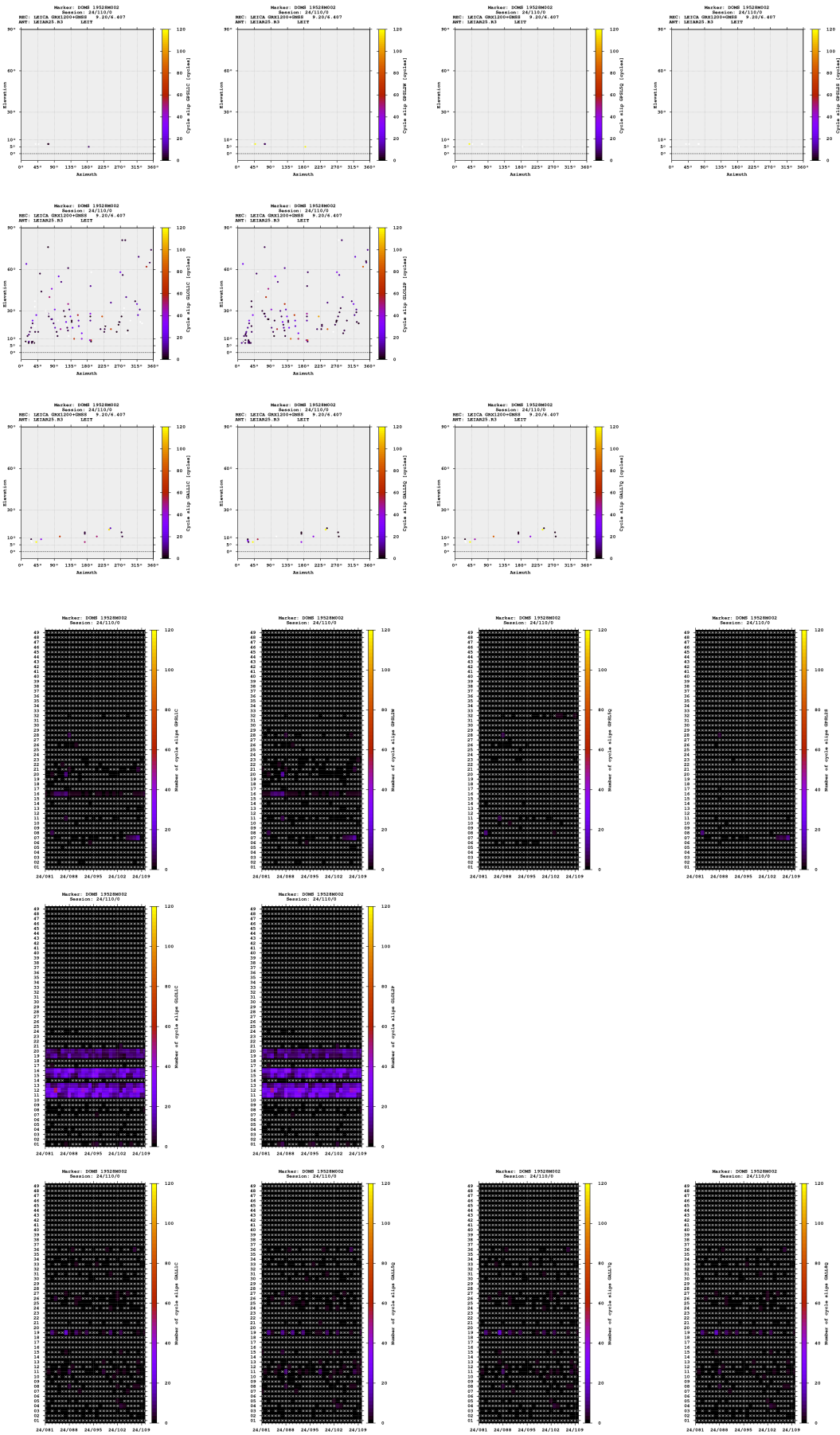




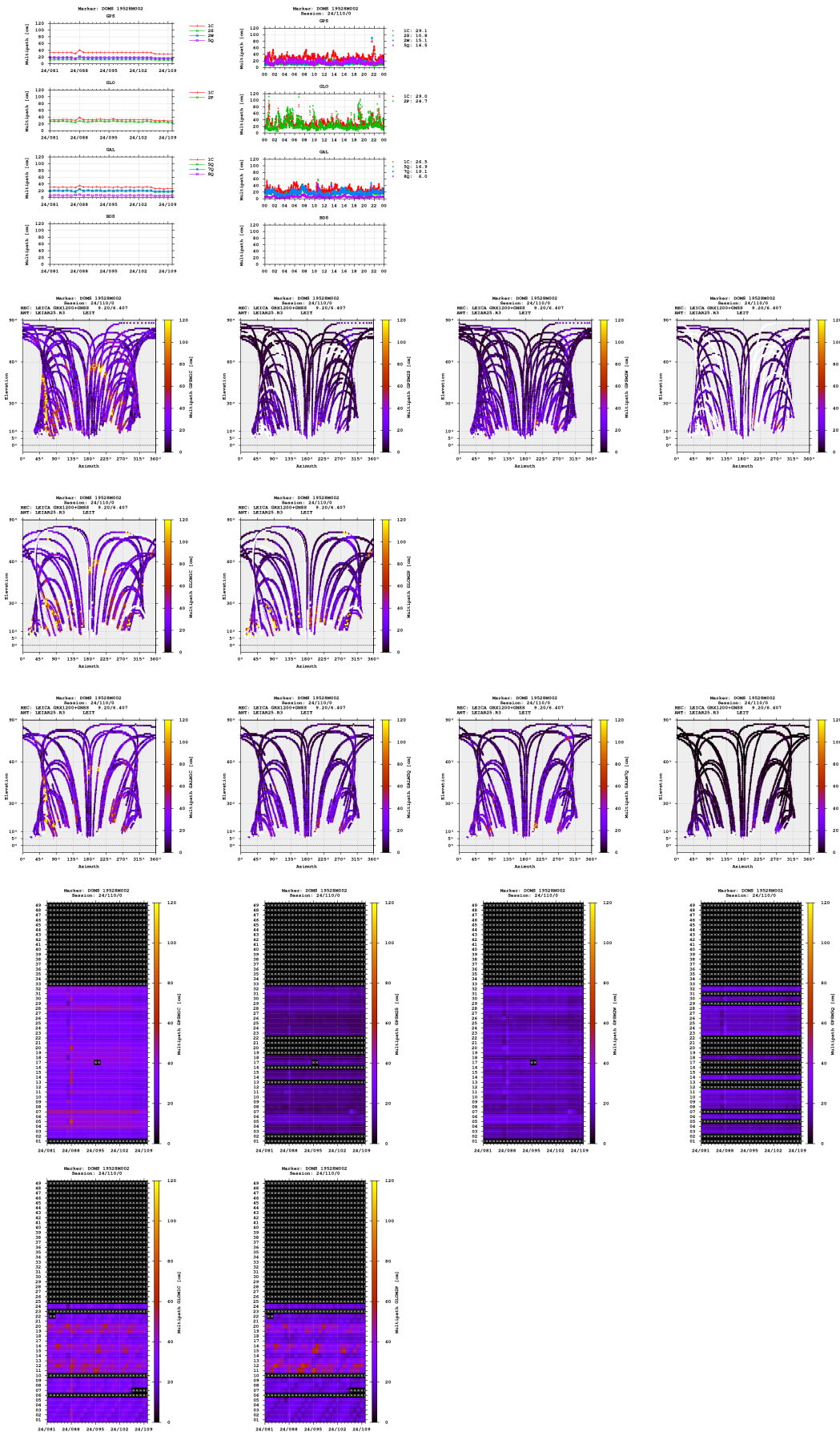
### Observations

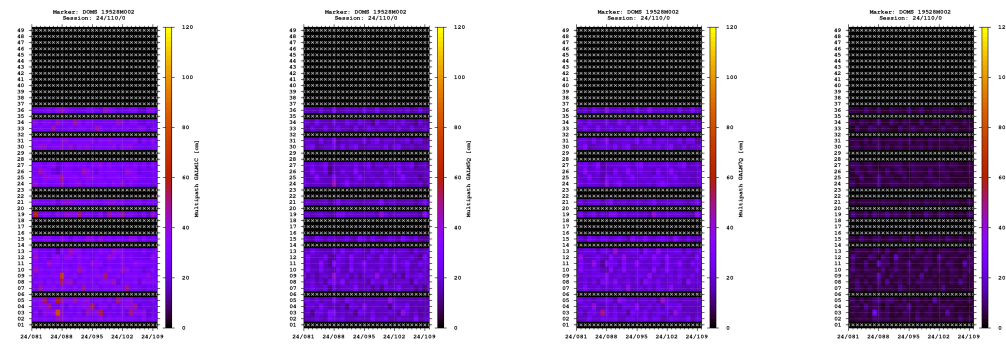


### Cycle slips



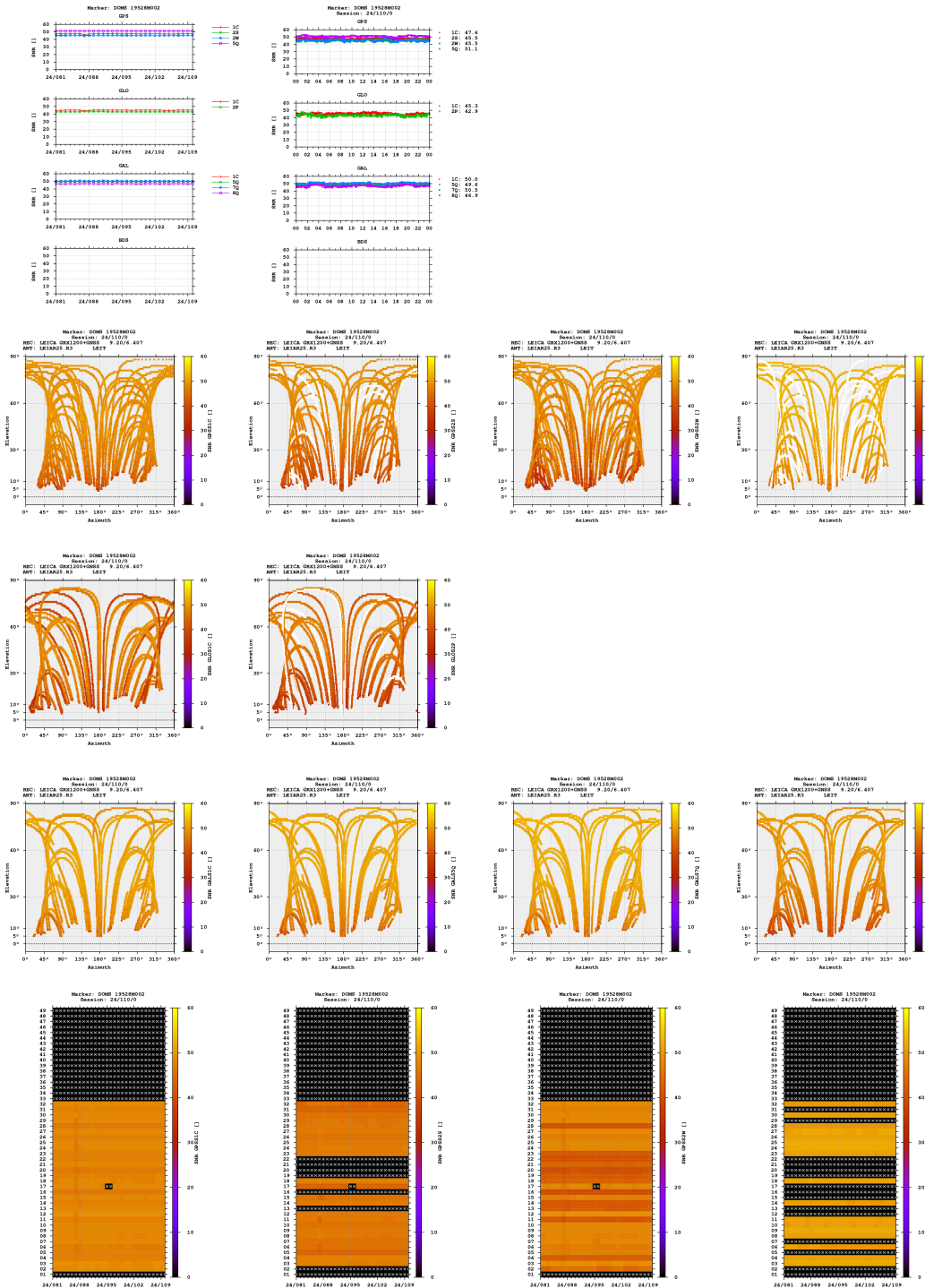
### Multipath

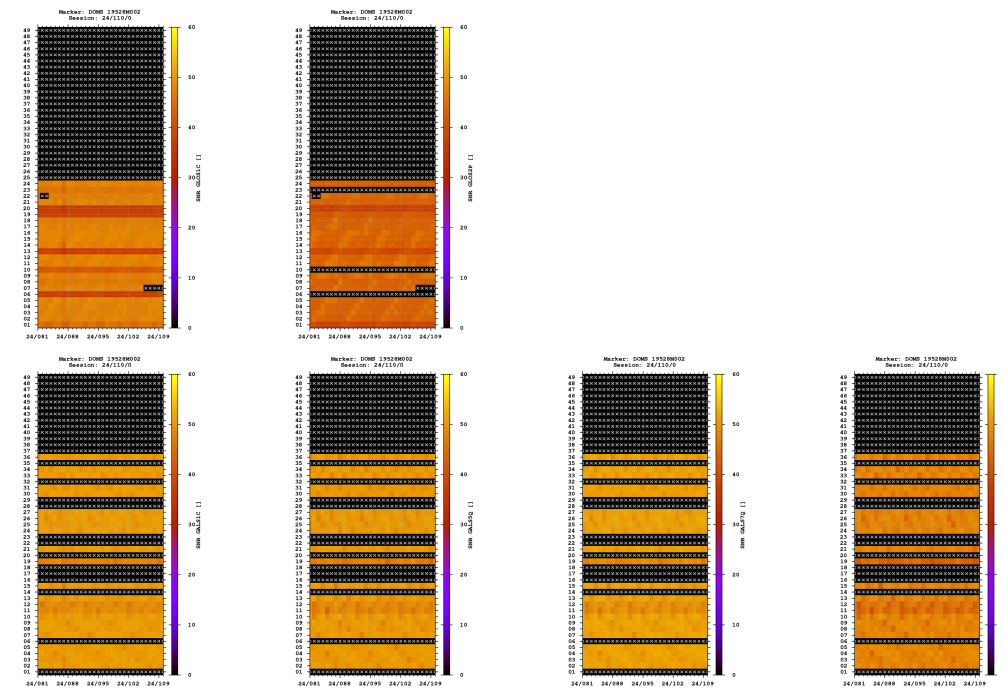




- The multipath is estimated as a standard deviation over a sequence of consecutive epochs.

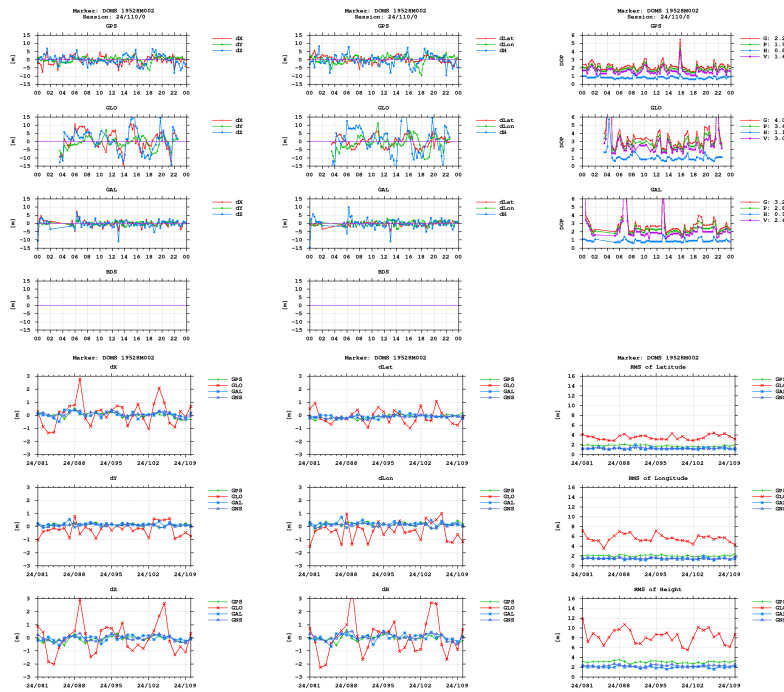
### Signal-to-noise ratio





**Estimates**

2024-04-19 00:00:00	GPS	4382807.1183	638314.8138	4574693.7440	46.119050210	8.286333816	366.0956
2024-04-19 00:00:00	GLO	4382808.1178	638313.9993	4574694.1059	46.119046815	8.286321526	366.9606
2024-04-19 00:00:00	GAL	4382807.6265	638314.8129	4574693.6542	46.119046390	8.286332857	366.3794



**Equipment**

2024-03-21 00:00:00 LEICA GRX1200+GNSS 9.20/6.407 496065 LEICA GRX1

**Program info**

G-Nut/Anubis Free [3.8] Mar 3 2024 20:32:19 (Rev: 4233)