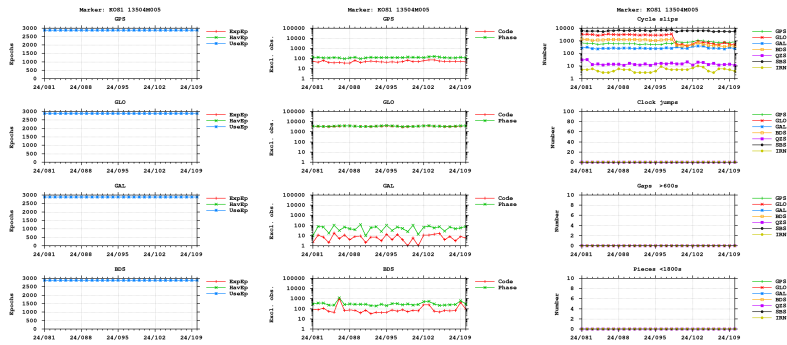


GNSS observation file monitoring for KOS1

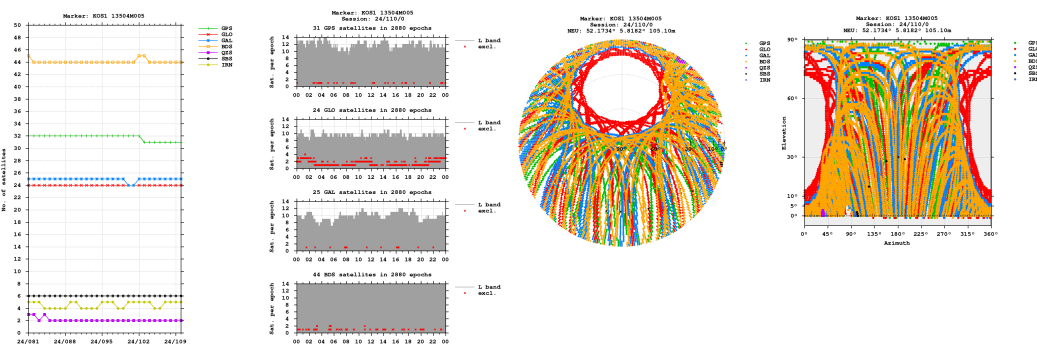
Last RINEX file: KOS11100.24D.Z
 RINEX version: 3.05
 Marker: KOS1 13504M005
 Receiver: 3048419 SEPT POLARX5E 5.5.0
 Antenna: 10050009 LEIAR25.R3 LEIT

Epochs

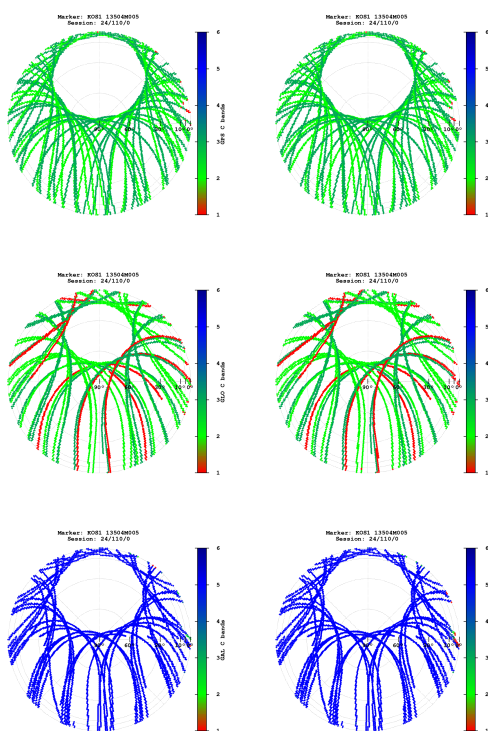


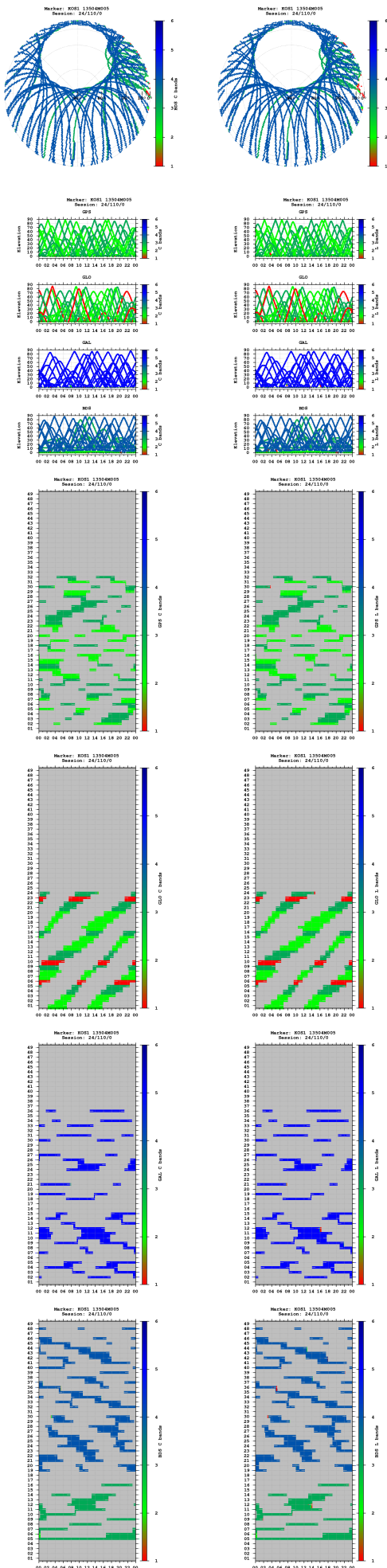
- "UseEp": The usable epoch is introduced if four or more satellites are observed with the minimum of two frequencies.
- Cycle slip detection algorithm is based on Melbourne-Wübbena and geometry-free LC.

Satellites

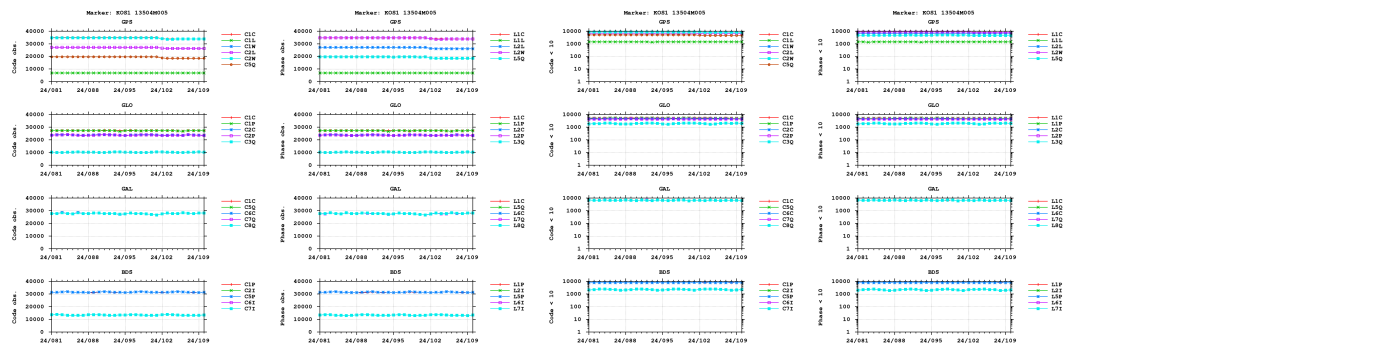


Bands

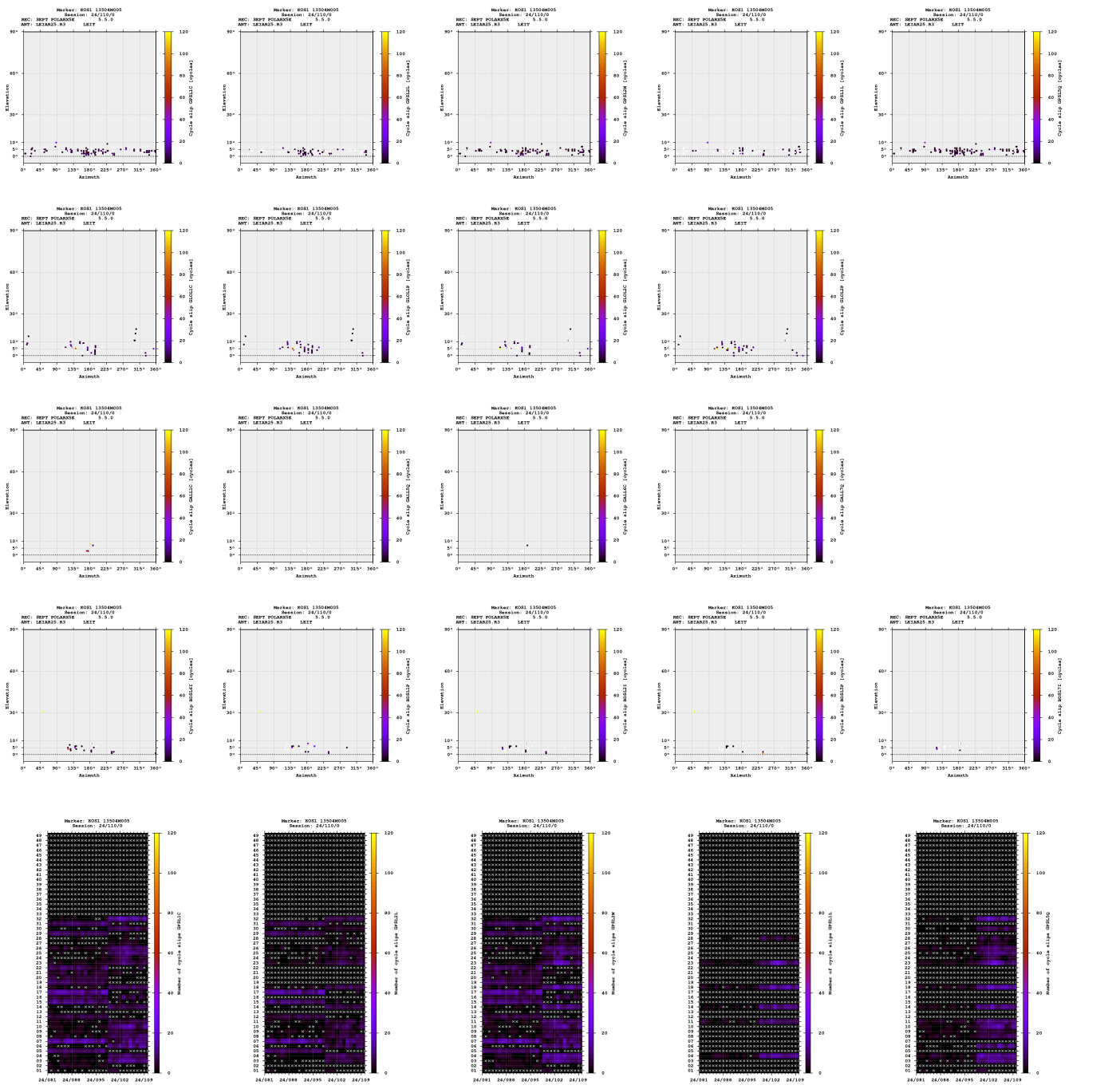


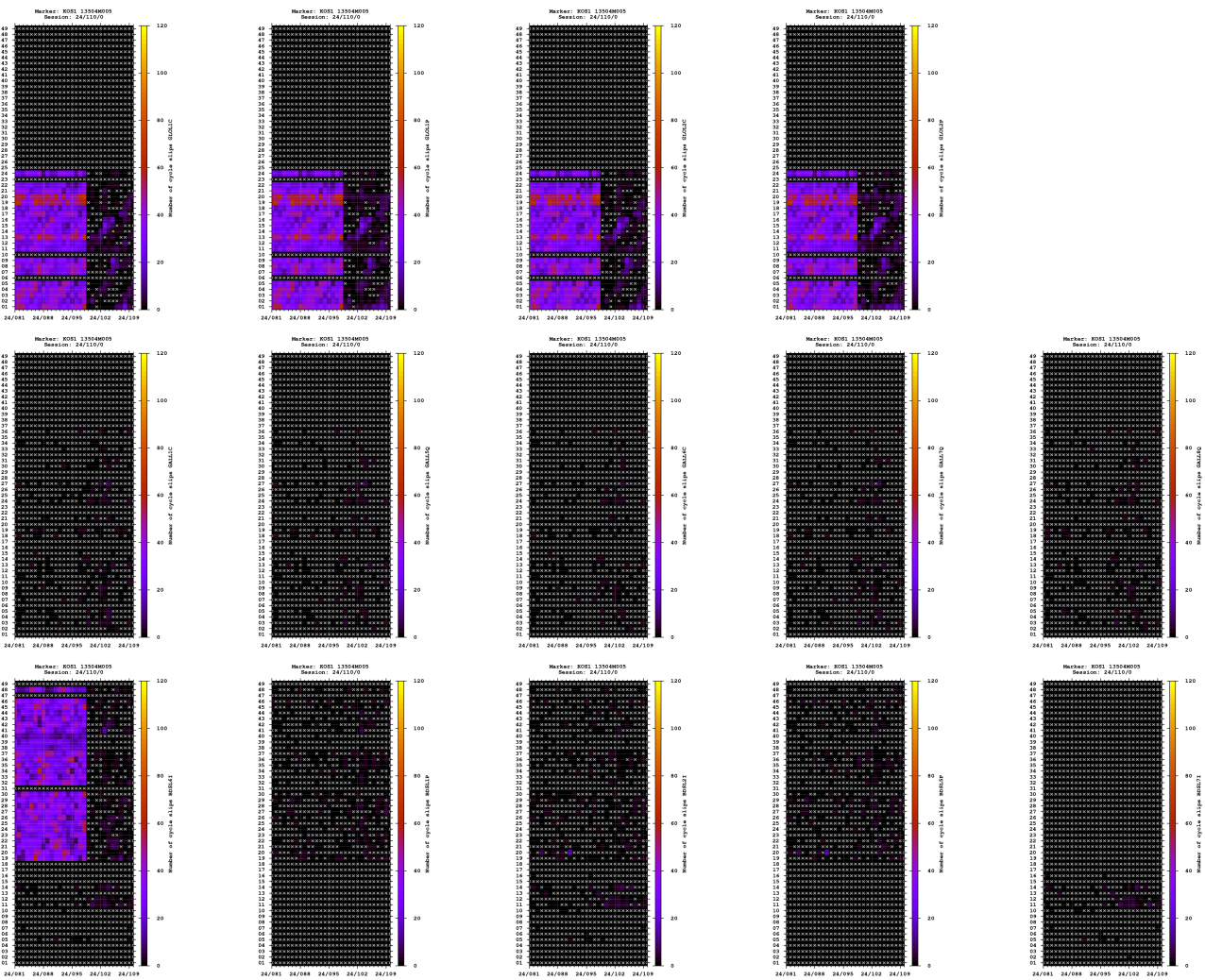


Observations

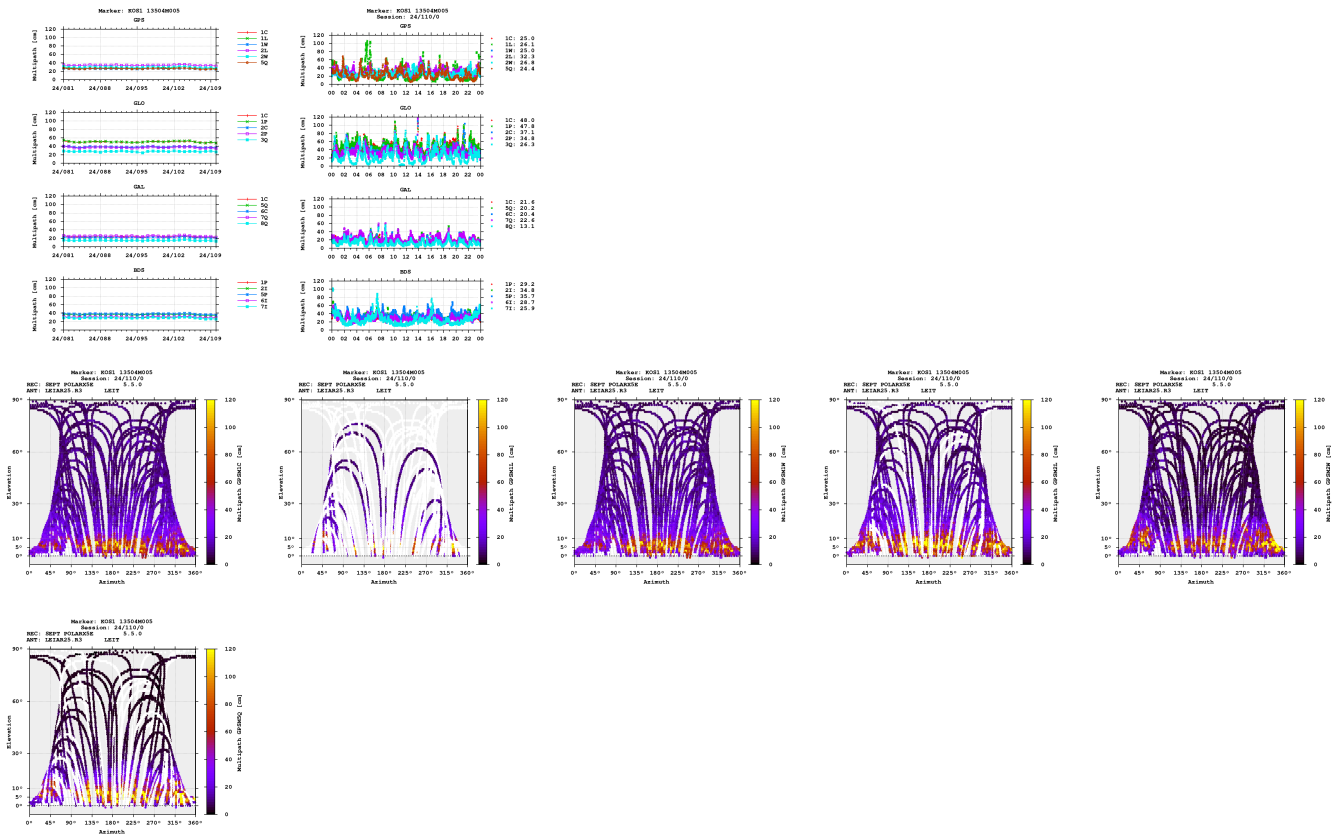


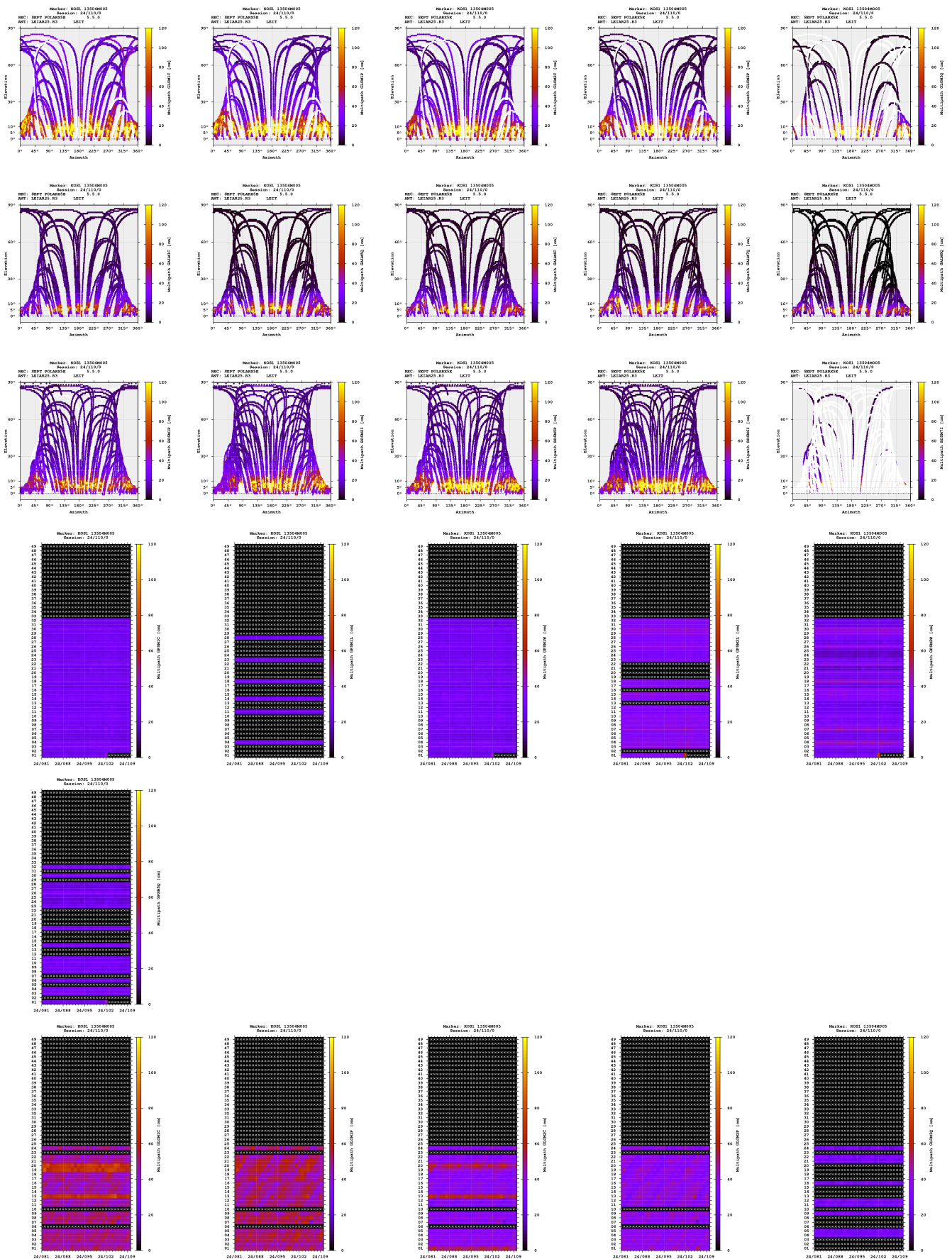
Cycle slips

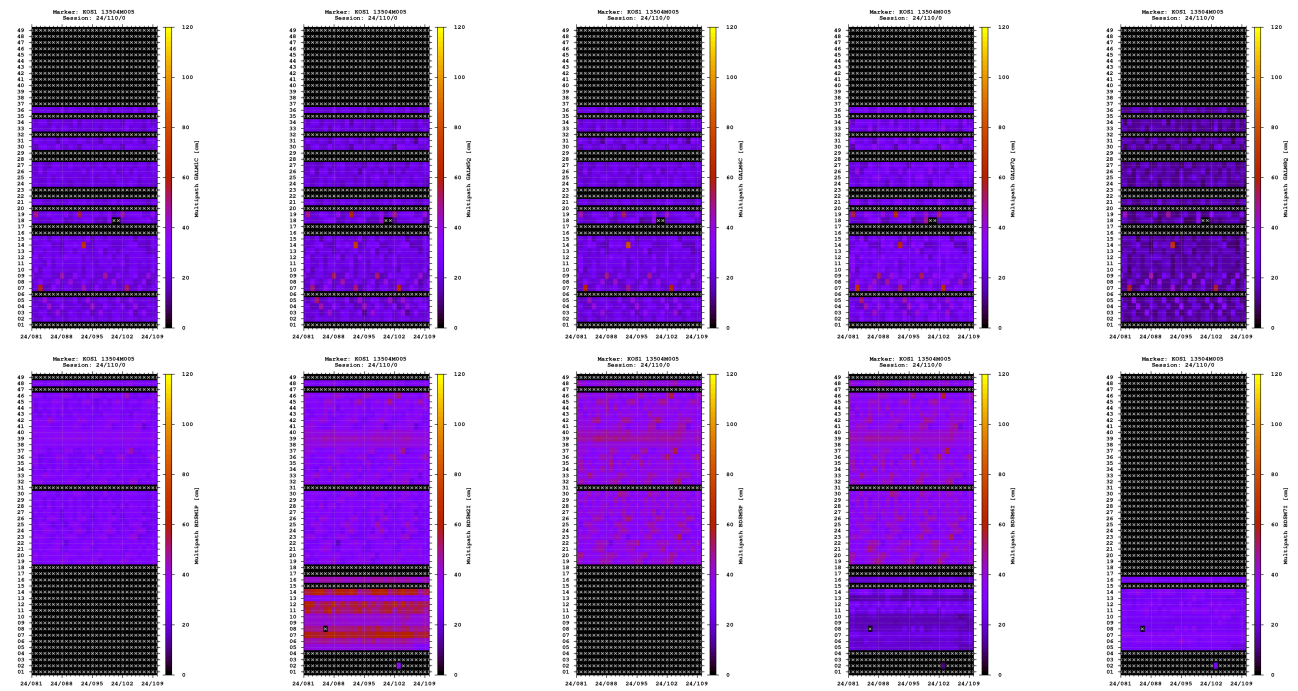




Multipath

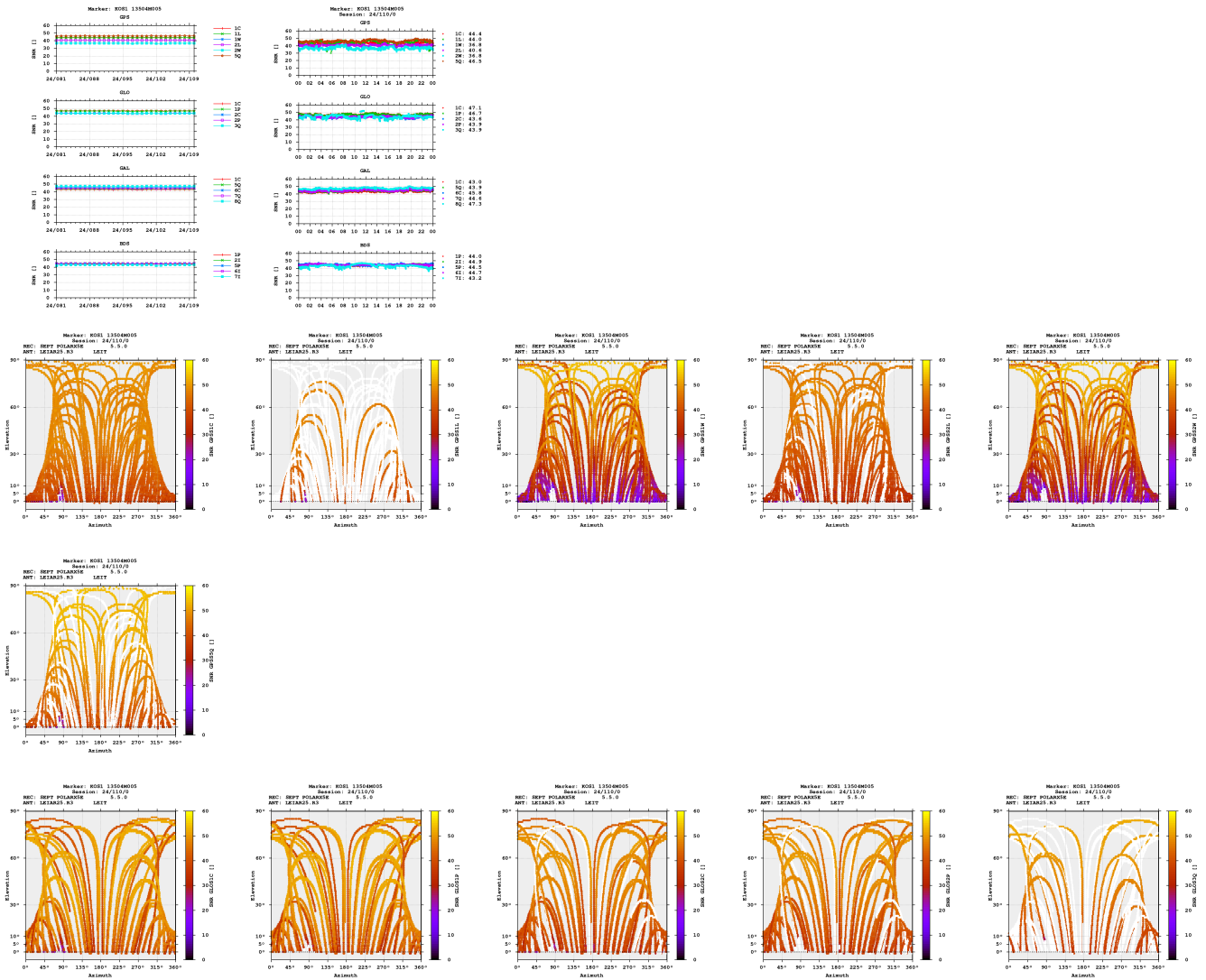


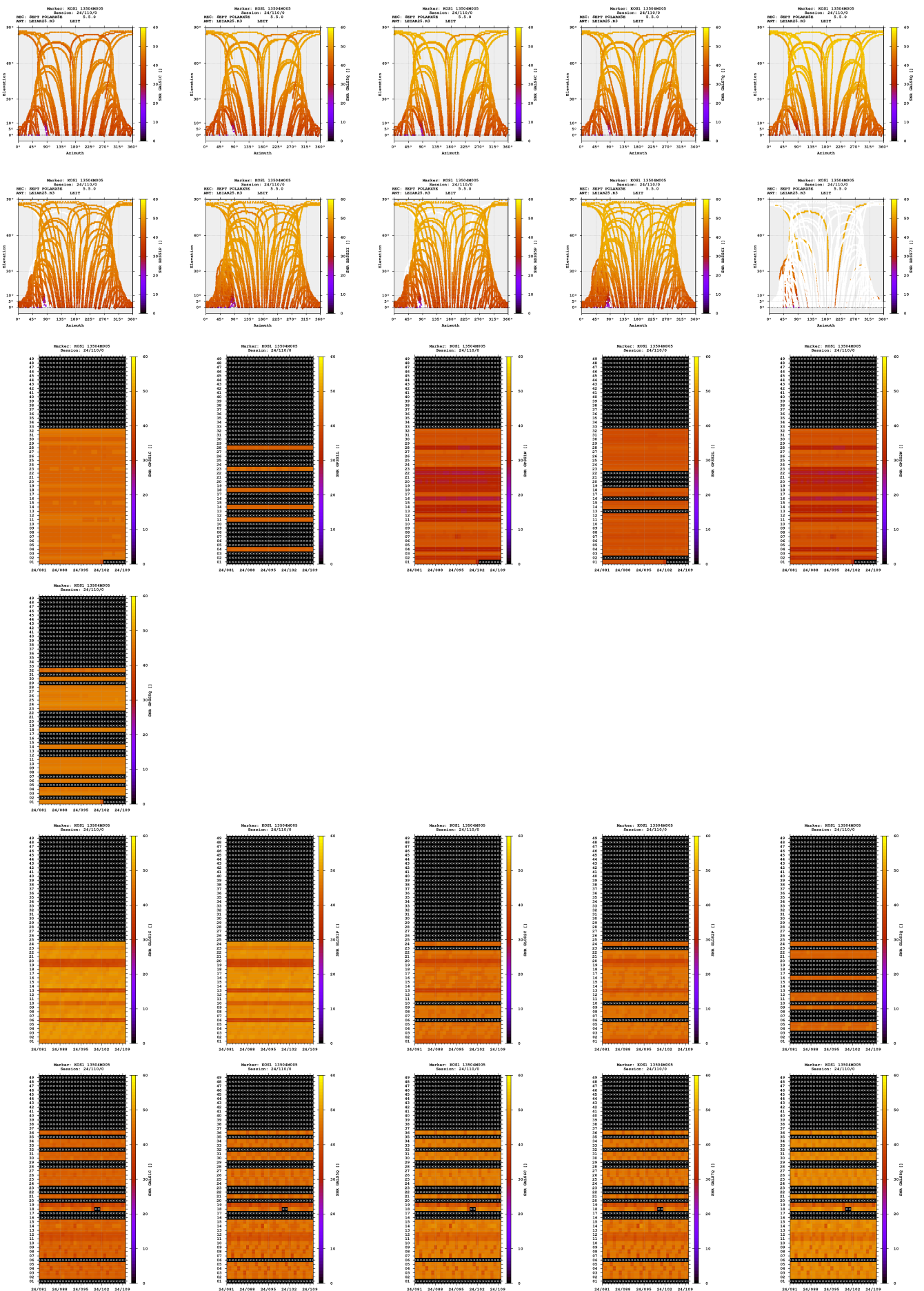


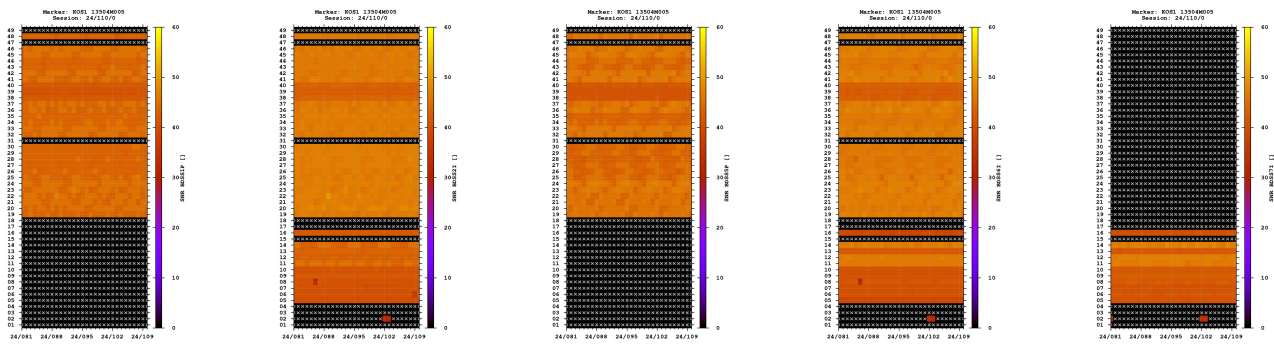


- The multipath is estimated as a standard deviation over a sequence of consecutive epochs.

Signal-to-noise ratio

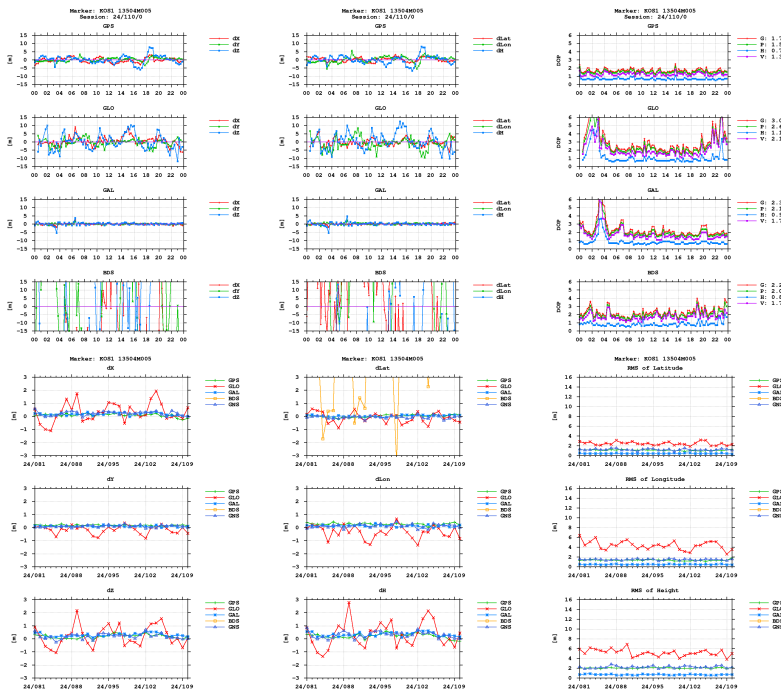






Estimates

2024-04-19 00:00:00	GPS	3899613.4989	397362.2471	5014739.4230	52.173361868	5.818234418	104.9173
2024-04-19 00:00:00	GLO	3899614.3201	397361.6587	5014739.3064	52.173356406	5.818225413	105.5371
2024-04-19 00:00:00	GAL	3899613.6504	397362.2231	5014739.4095	52.173361298	5.818234613	105.2450
2024-04-19 00:00:00	BDS	3899569.1825	397393.9429	5014709.5461	52.173487383	5.818754285	52.9016



Equipment

2024-03-21 00:00:00 SEPT POLARX5E 5.5.0 3048419 SEPT POLAR

Program info

G-Nut/Anubis Free [3.8] Mar 3 2024 20:32:19 (Rev: 4233)