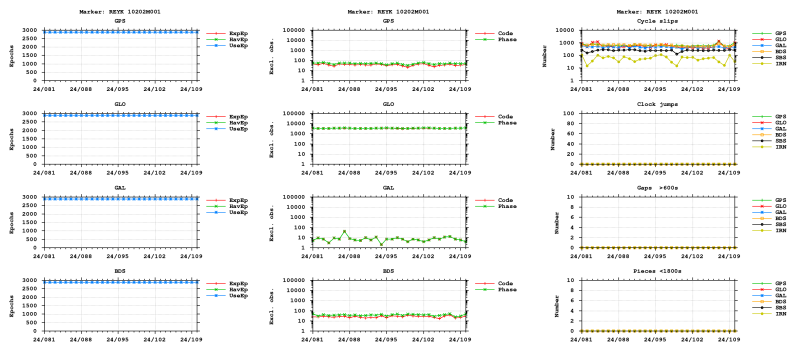


GNSS observation file monitoring for REYK

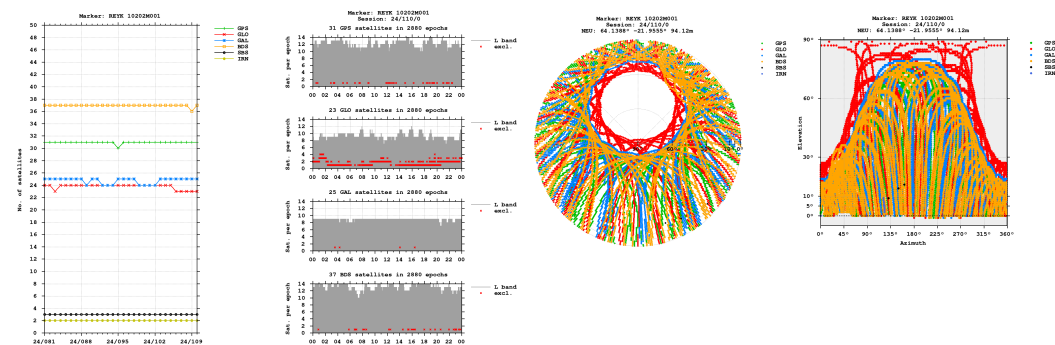
Last RINEX file: REYK1100.24D.Z
 RINEX version: 3.04
 Marker: REYK 10202M001
 Receiver: 1830137 LEICA GR50 4.70/7.813
 Antenna: 725281 LEIAR25.R4 LEIT

Epochs

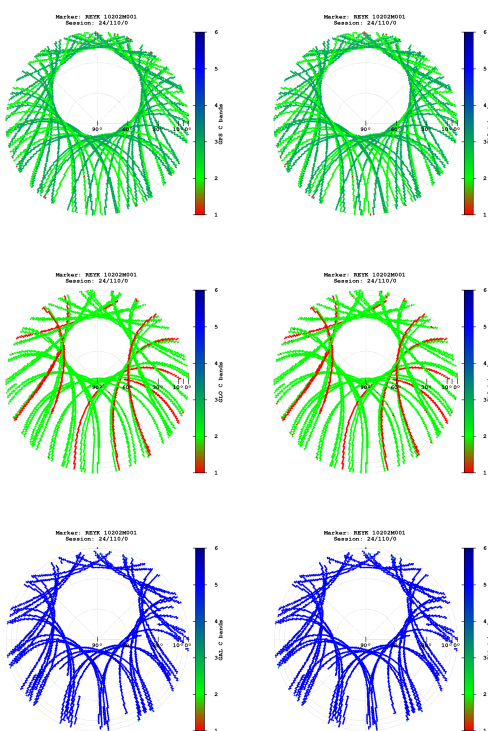


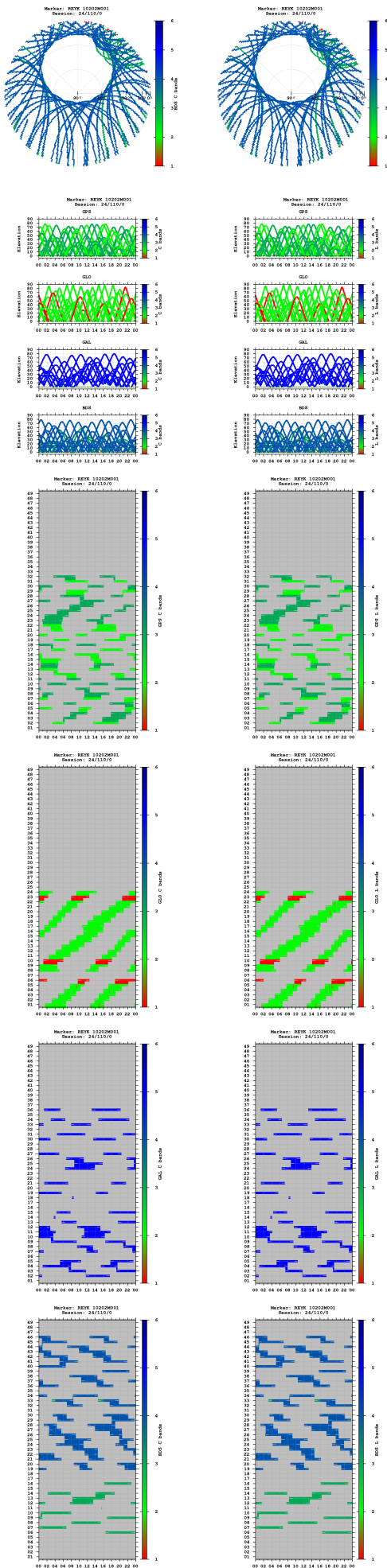
- "UseEp": The usable epoch is introduced if four or more satellites are observed with the minimum of two frequencies.
- Cycle slip detection algorithm is based on Melbourne-Wübbena and geometry-free LC.

Satellites

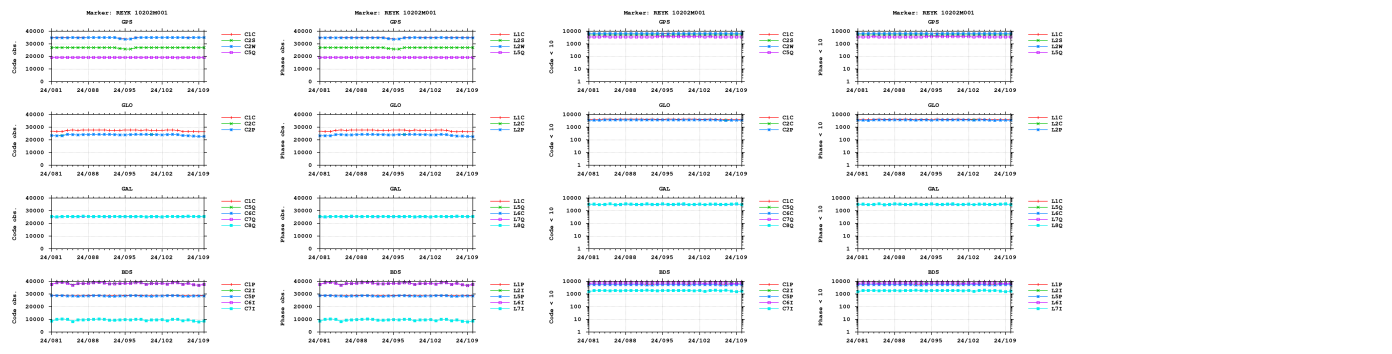


Bands

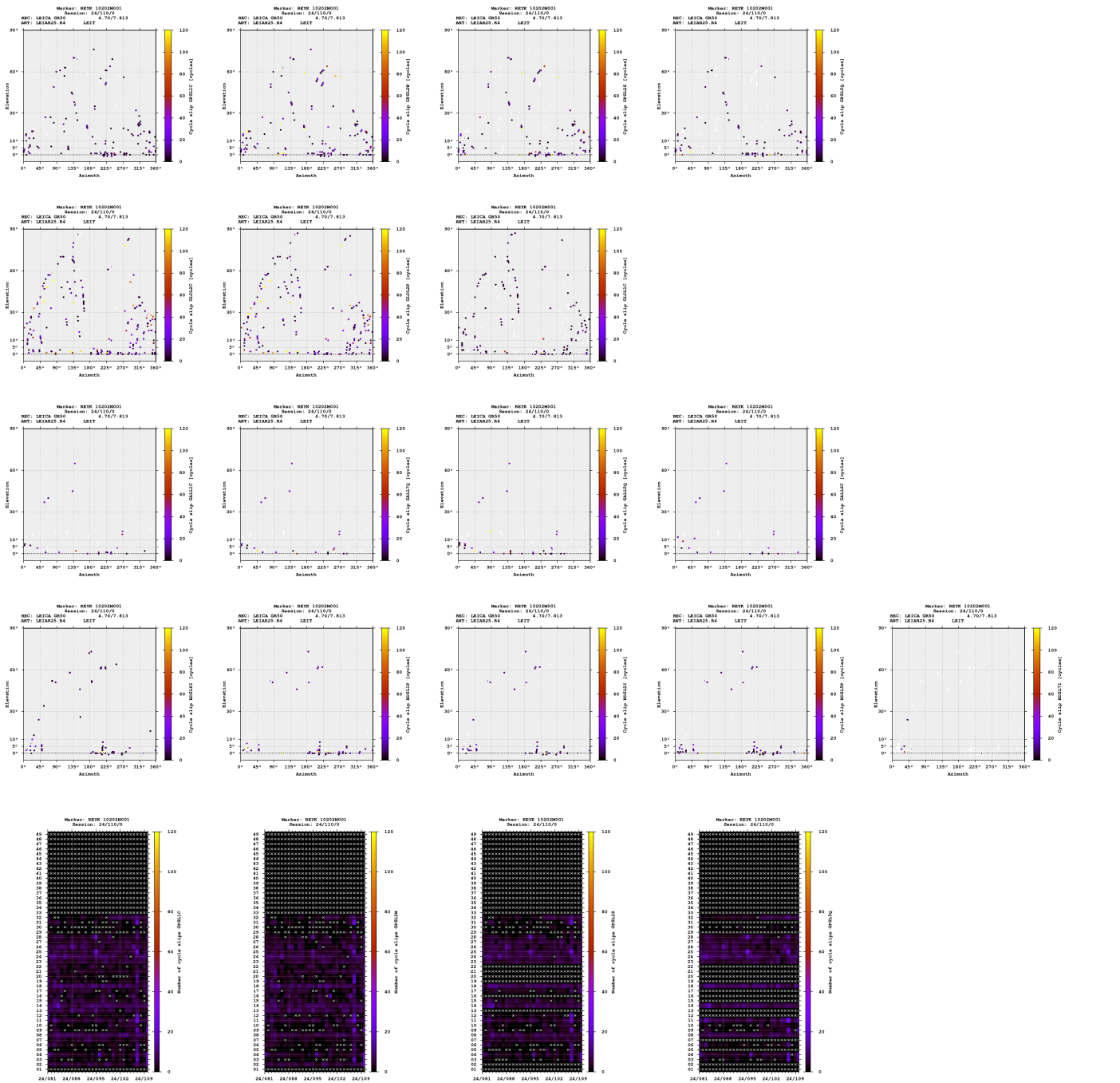


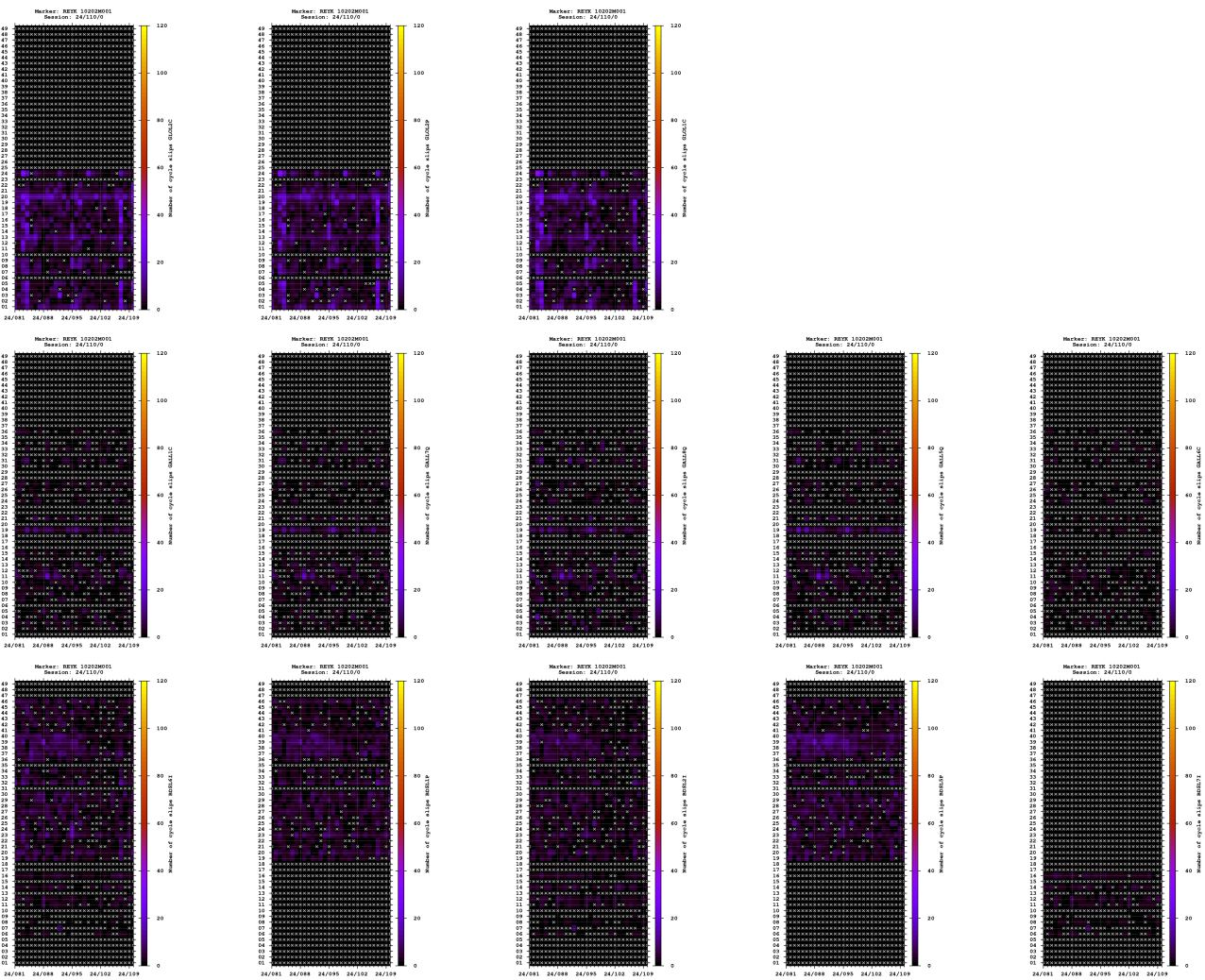


Observations

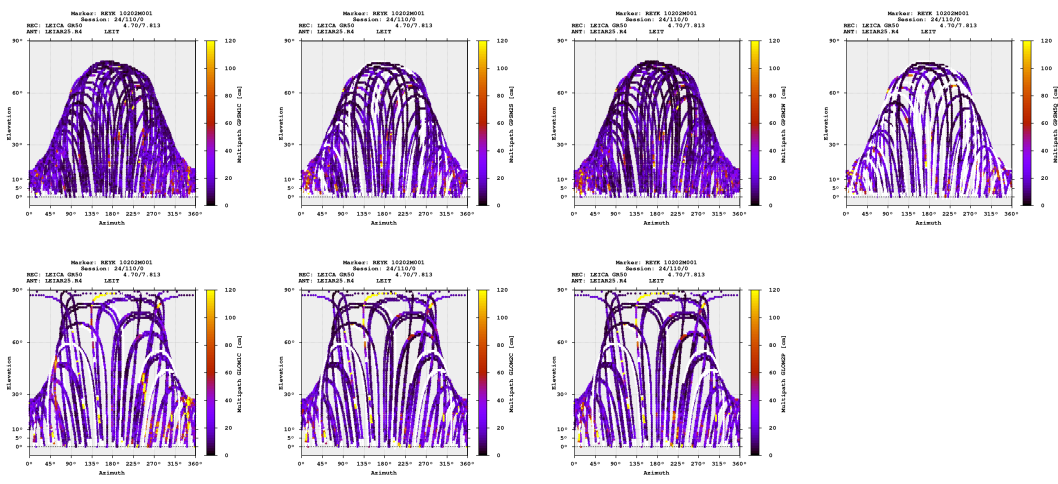
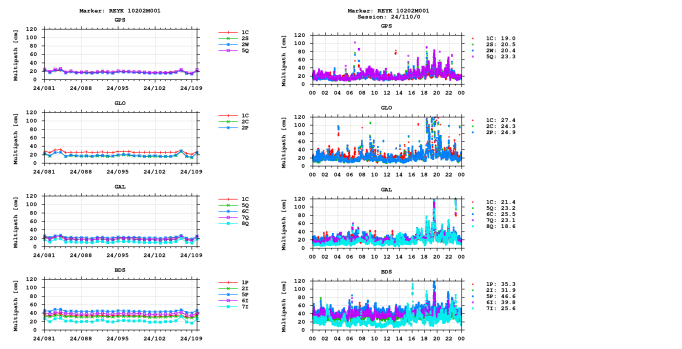


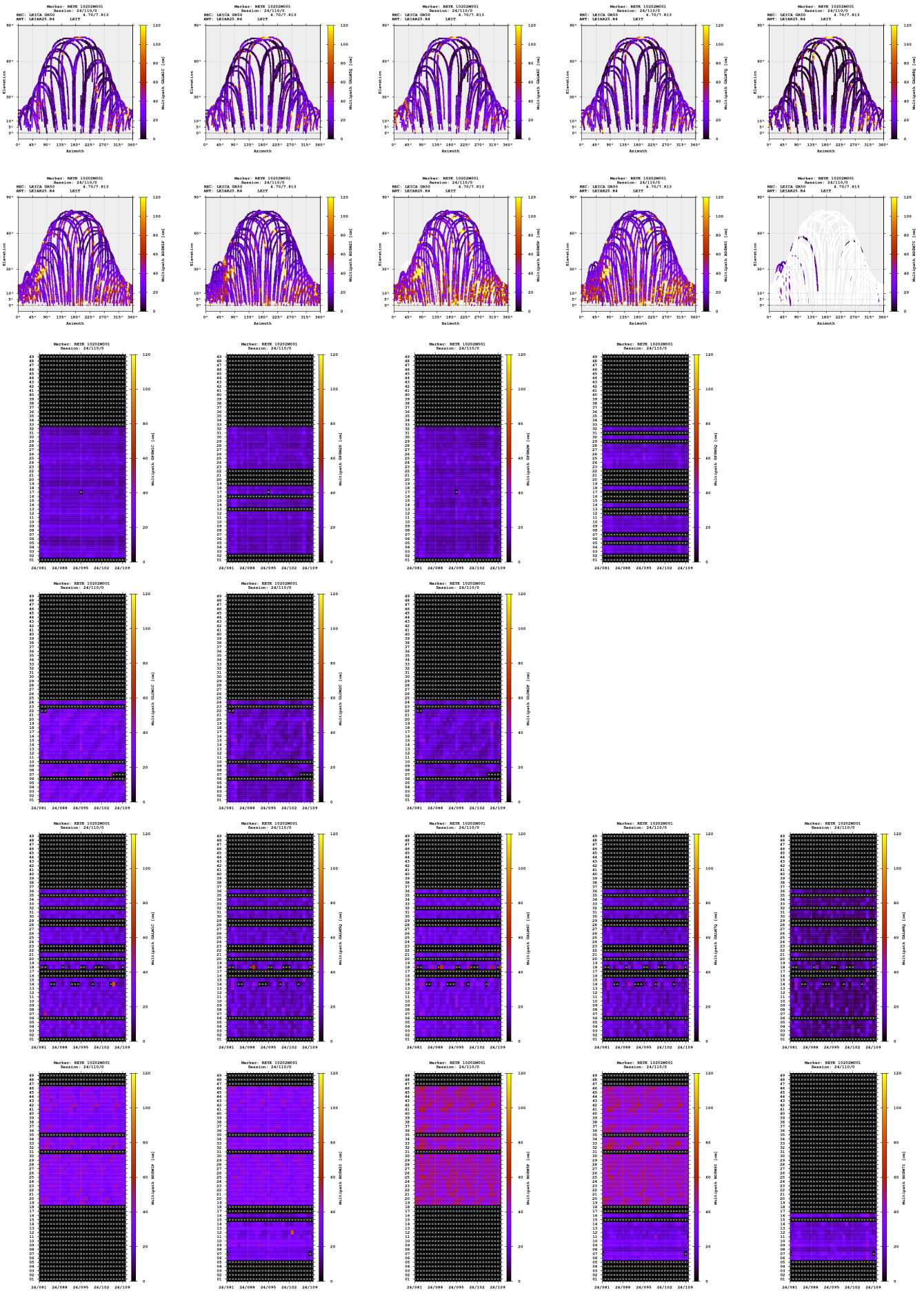
Cycle slips





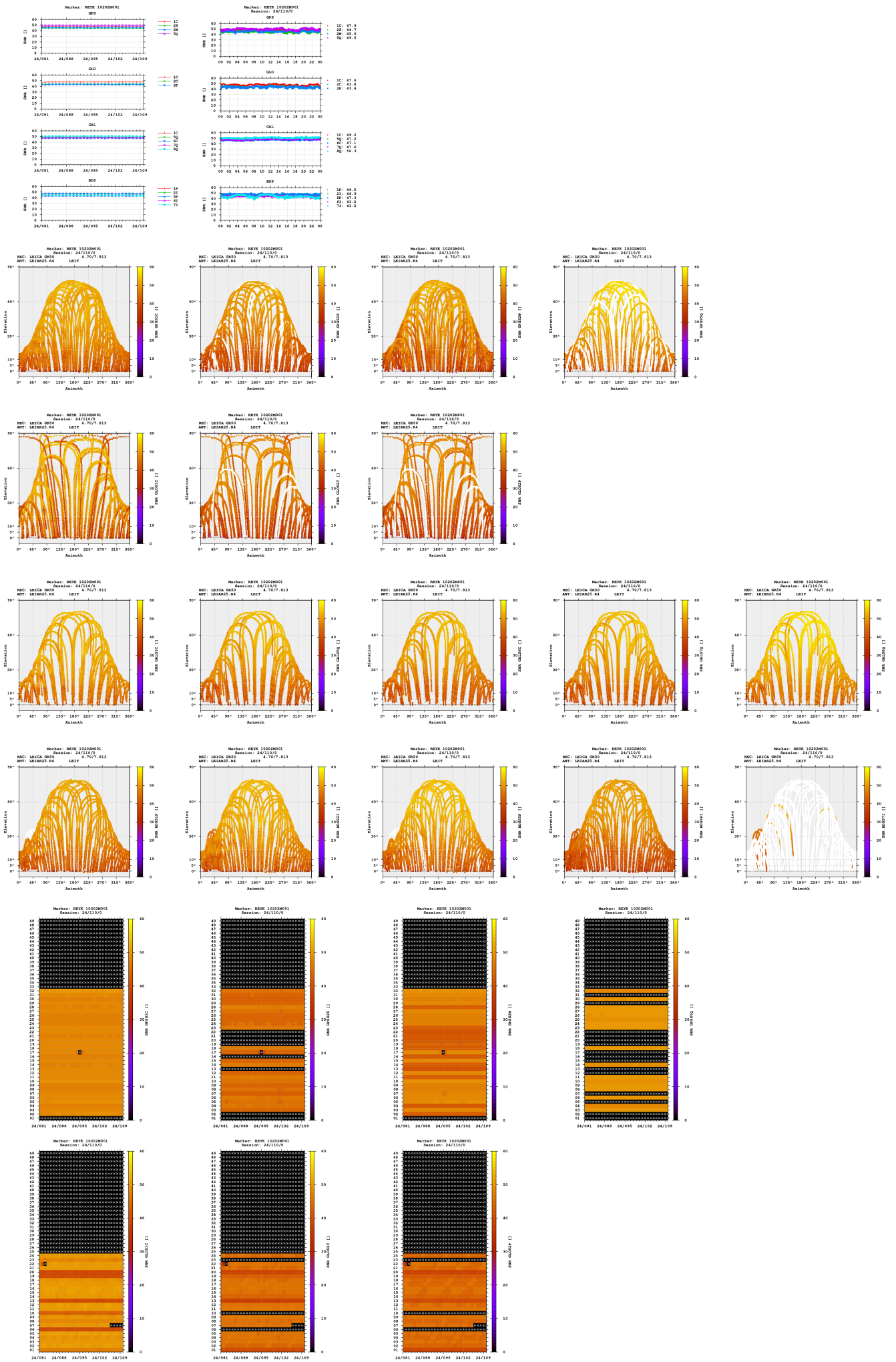
Multipath

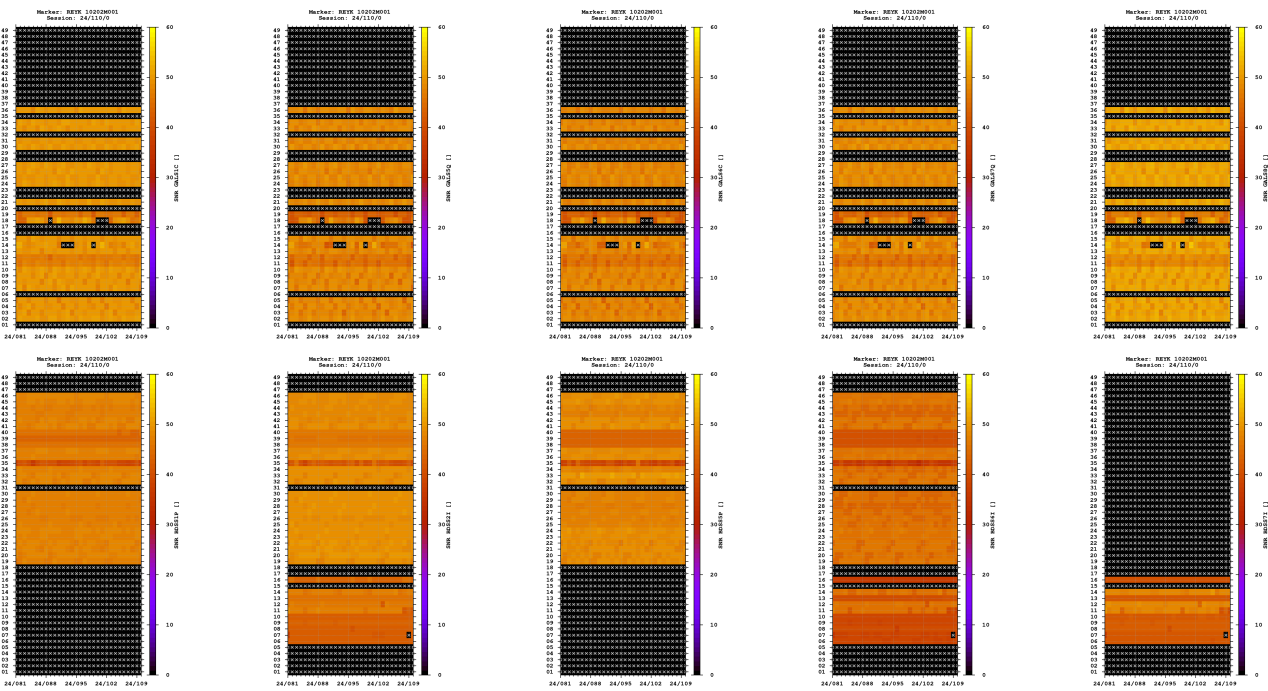




- The multipath is estimated as a standard deviation over a sequence of consecutive epochs.

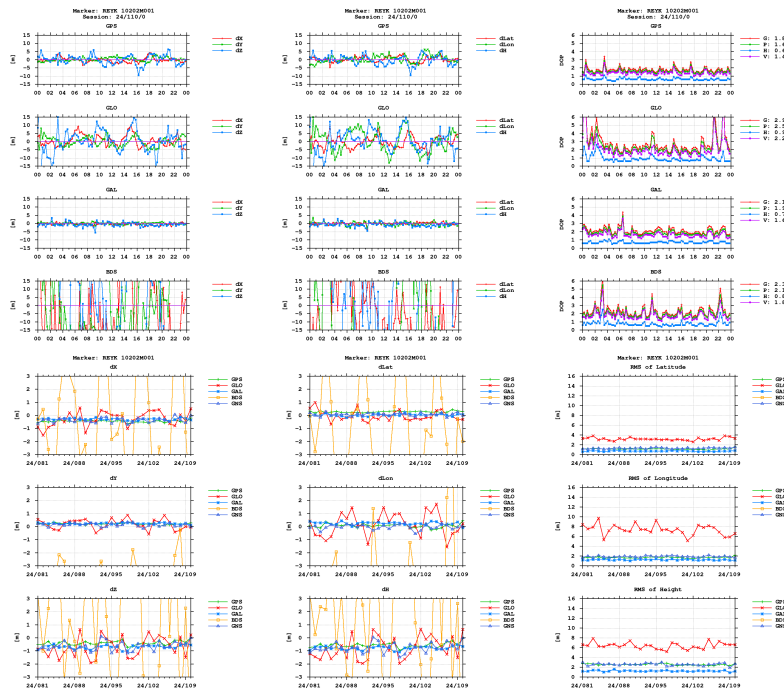
Signal-to-noise ratio





Estimates

2024-04-19 00:00:00	GPS	2587384.1660	-1043033.6426	5716565.1387	64.138789409	338.044511137	94.0870
2024-04-19 00:00:00	GLO	2587384.8775	-1043033.9616	5716565.3612	64.138784138	338.044508844	94.7533
2024-04-19 00:00:00	GAL	2587384.0146	-1043033.8240	5716564.5925	64.138787538	338.044506143	93.4580
2024-04-19 00:00:00	BDS	2587377.4403	-1043044.4745	5716557.7013	64.138768988	338.044249562	83.8854



Equipment

2024-03-21 00:00:00 LEICA GR50 4.70/7.813 1830137 LEICA GR50

Program info

G-Nut/Anubis Free [3.8] Mar 3 2024 20:32:19 (Rev: 4233)